

Welcome!

Project Timeline & Overview

HOW WE GOT HERE

May 2010 Parks staff met with Anders Olesen to discuss his wishes for the property once it becomes a park.
Recap: → *Keep it mostly as is*
→ *Provide a covered community space*
→ *Use the field for informal play in summer*

February 2012 The 6.34 acre property was gifted to the RDN following the passing of the Olesens, creating *Anders & Dorrit's Community Park*.

September 2013 Park Opening and Open House were held to introduce the Park and to seek feedback on the future of the Olesen house:
↳ *majority of support was for its removal*

Fall 2017/ Winter 2018 The East Wellington/Pleasant Valley Parks and Open Spaces Advisory Committee and RDN Park staff reviewed and refined the concept ideas for community input before moving to detailed design.

NOW

April 2018 Community Open House to present the Concept Plan and gauge acceptance prior to moving to detailed design and construction.

NEXT STEPS

Summer 2018 Parks staff to apply to the Agricultural Land Commission (ALC) for approval of proposed changes in the Park. (Property is located within the Agricultural Land Reserve).

Fall/Winter 2018 Complete detailed design and expected cost estimate for the project. RDN Board to approve budget for project construction.

Spring 2019 Seek funding to support the construction budget (if opportunities available).

Fall 2019 Once all approvals in place (ALC, RDN, other), initiate project construction phase.



Share your thoughts!
Please complete a questionnaire.



What's Different?

- picnic shelter location
- parking lot orientation
- gravel trail proposed parallel to Jingle Pot Rd
- year-round "river walk" proposed (with culvert and foot bridge)

Look for Project Updates at:
rdn.bc.ca/anders-and-dorrits-community-park



Site Planning & Design Goals

- Respect the vision for the property as set out by Anders Olesen
- Strive to re-use materials from the site in the new design
- Focus active space (such as plazas and picnic shelter) on the previously disturbed home-site
- Create a community space that could be used like an 'out-door classroom'
- Preserve garden areas and specimen trees
- Ensure unobstructed views to Mount Benson
- Integrate interpretive information on the park's origin, ecology and unique trees
- Improve parking and visibility of the park from the road

Unique Trees on the Property

Davidia



Japanese cherry



Ginkgo



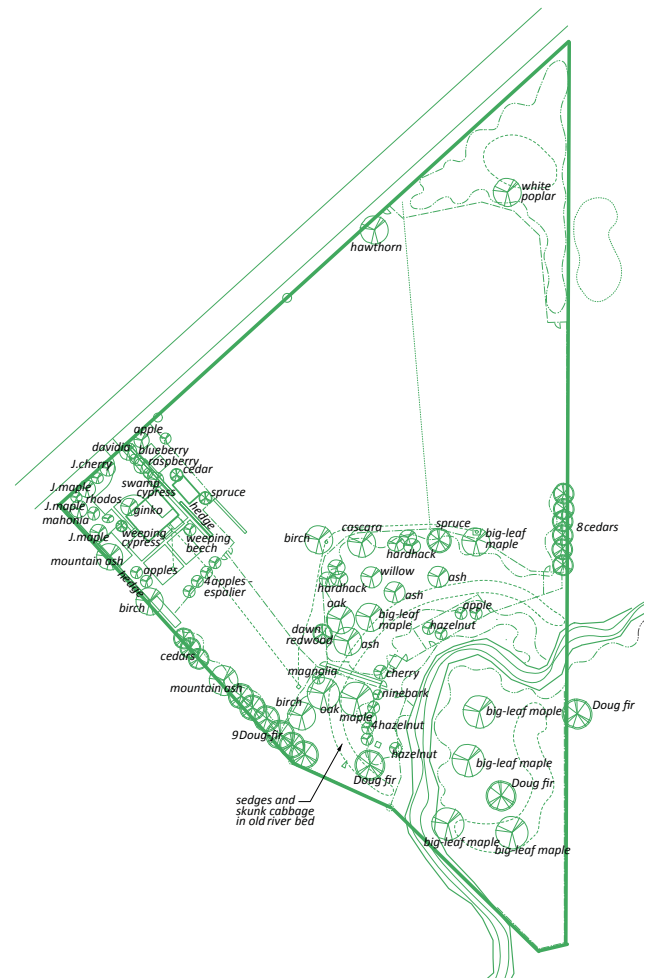
Dawn redwood summer foliage



Dawn redwood in the fall



Ninebark



2010 Plant Inventory
(information provided by Anders Olesen)

Site Plan



Site Views



Main Activity Area (looking west)



Picnic Shelter and Field (looking west)