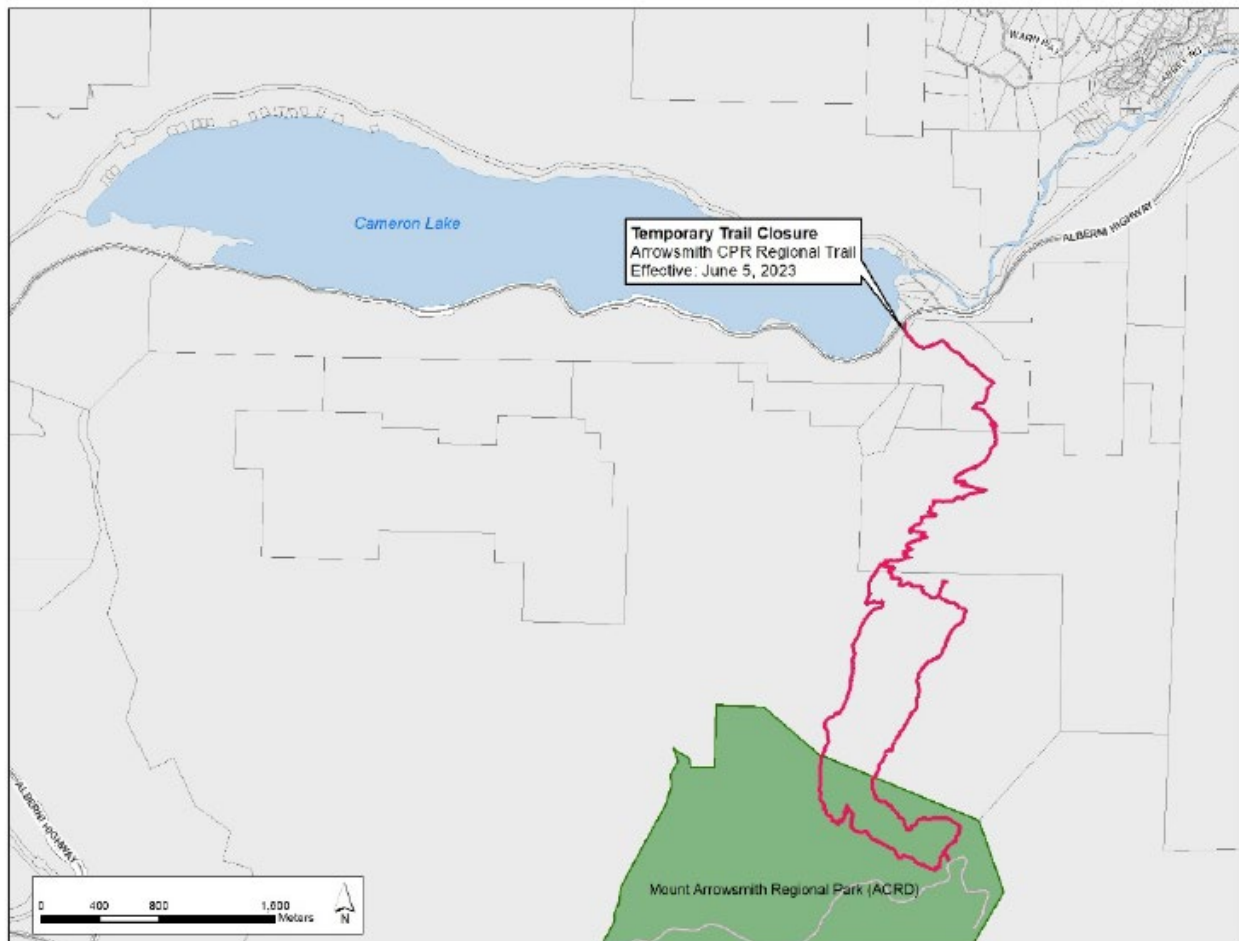


## CPR Regional Trail Closure, Mount Arrowsmith Regional Park Update

The CPR Regional Trail in Mount Arrowsmith Regional Park remains closed to help reduce congestion on Highway 4 while crews work to restore this critical travel corridor. For your safety, please do not use this trail until the closure has been lifted. Once Highway 4 is fully open, the CPR Regional Trail will be reopened. We appreciate your patience and understanding.



For more information, please contact:  
Parks Services  
Regional District of Nanaimo  
1-888-828-2069  
rdnparks@rdn.bc.ca

Get Involved RDN!