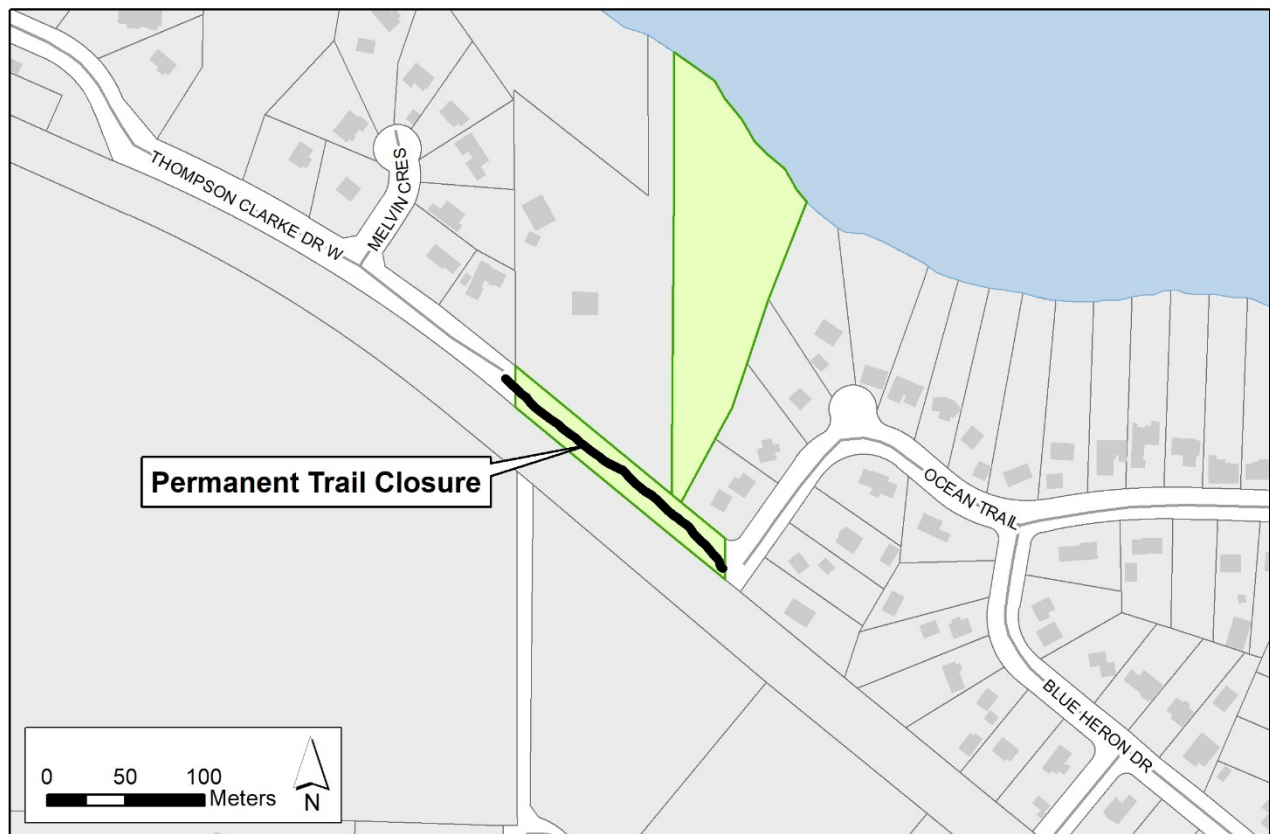


## Thompson Clarke - Ocean Trail Permanently Closed

The Thompson Clarke-Ocean Trail between Thompson Clarke Drive W and Ocean Trail is now permanently closed. The Regional District of Nanaimo (RDN) appreciates the access provided over a section of private lands through a License of Use agreement with the private landowner since 2005. Due to site conditions, the agreement has ended.

RDN Parks is currently reviewing alternate trail routes to secure access for a new trail alignment that links the two area neighbourhoods.



For more information, please contact:  
Parks Services  
Regional District of Nanaimo  
1-888-828-2069  
rdnparks@rdn.bc.ca

Get Involved RDN!