

# LIGHTHOUSE COUNTRY REGIONAL TRAIL

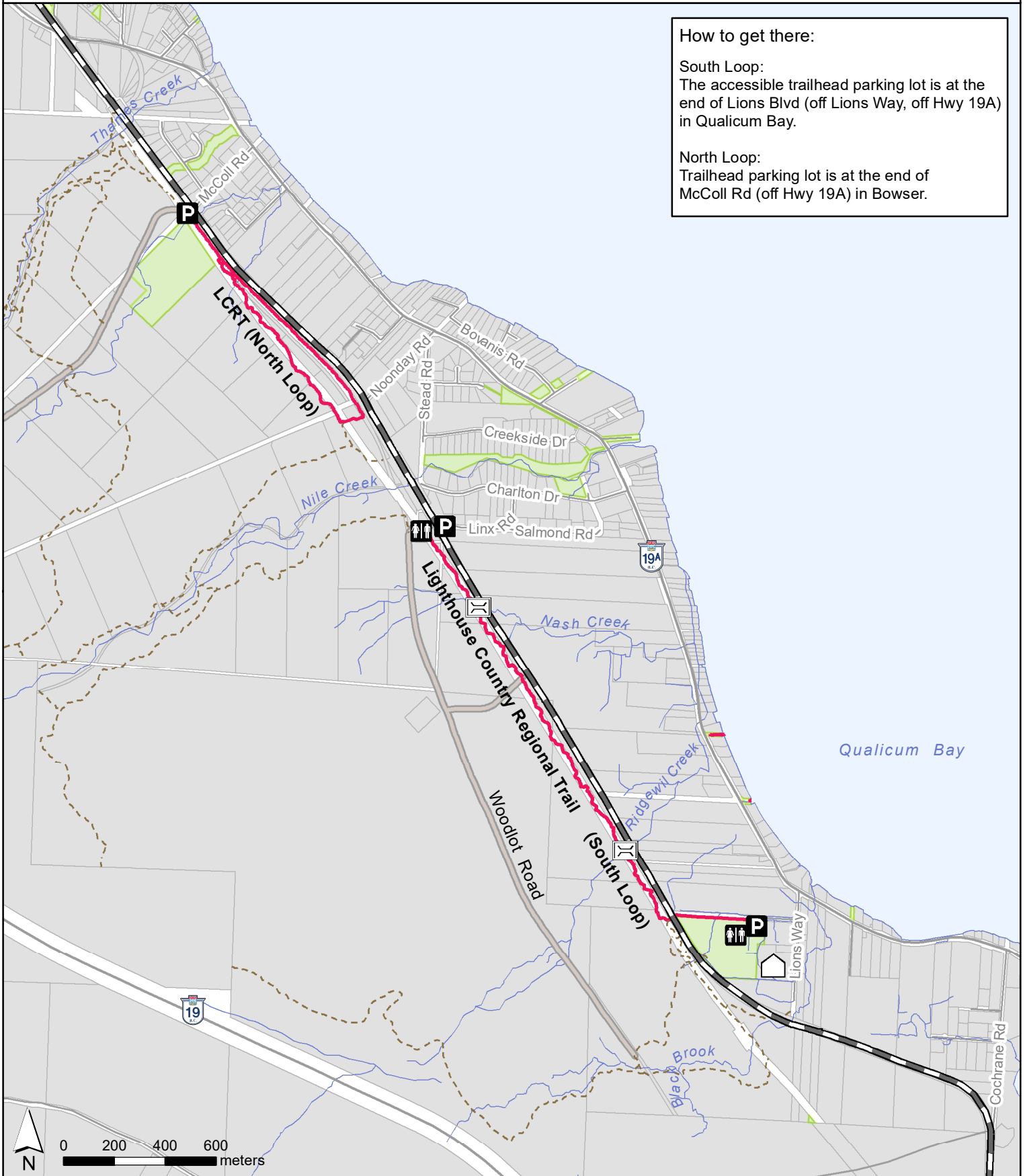
## How to get there:

### South Loop:

The accessible trailhead parking lot is at the end of Lions Blvd (off Lions Way, off Hwy 19A) in Qualicum Bay.

### North Loop:

Trailhead parking lot is at the end of McColl Rd (off Hwy 19A) in Bowser.



- |              |                             |                        |             |                |
|--------------|-----------------------------|------------------------|-------------|----------------|
| Parking      | Bridge                      | RDN Recreational Trail | Gravel Road | Community Park |
| Vault Toilet | Lighthouse Community Centre | Other Trail            | Railway     |                |