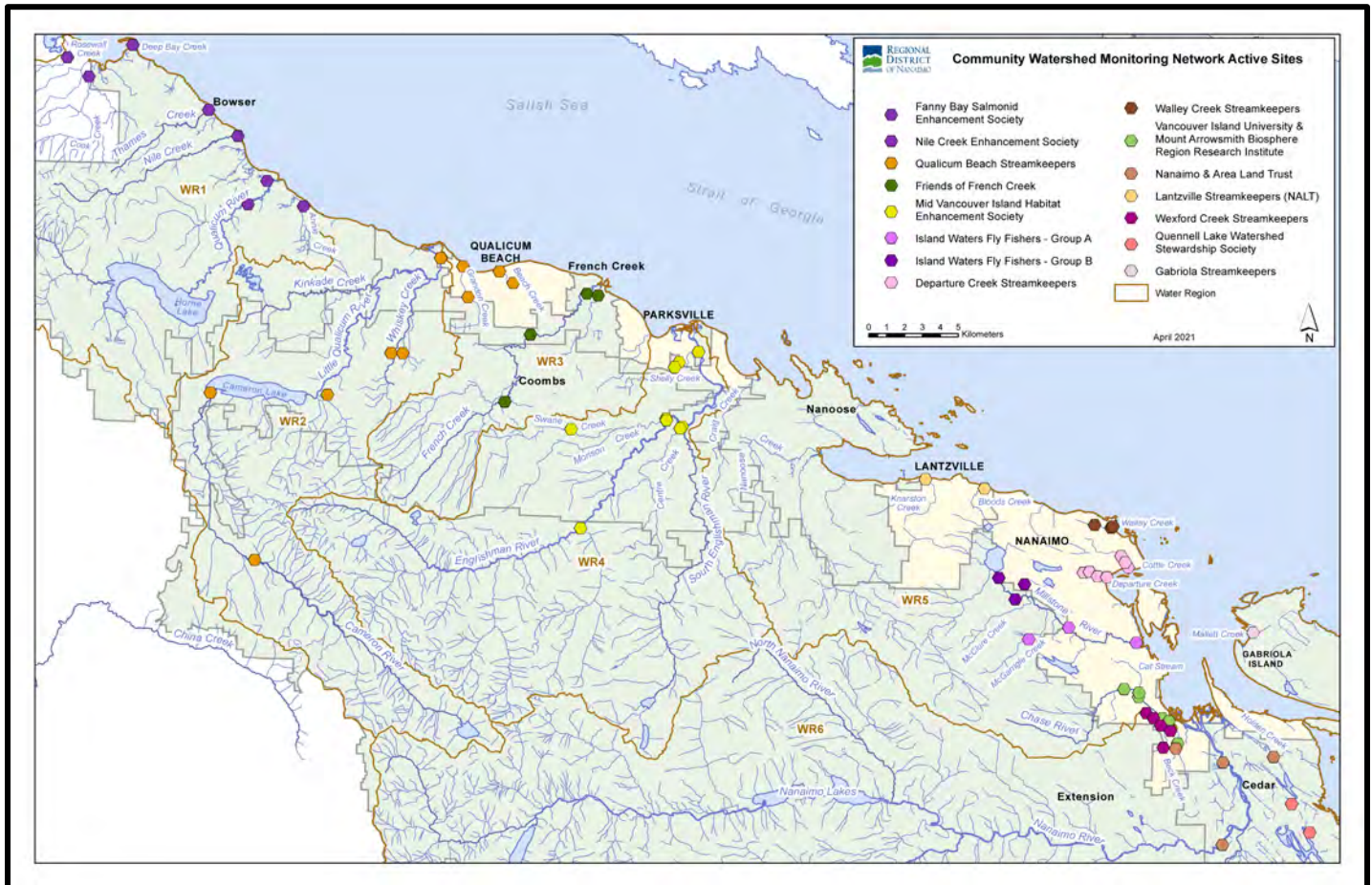


Community Watershed Monitoring Network 2021 Results by Water Region

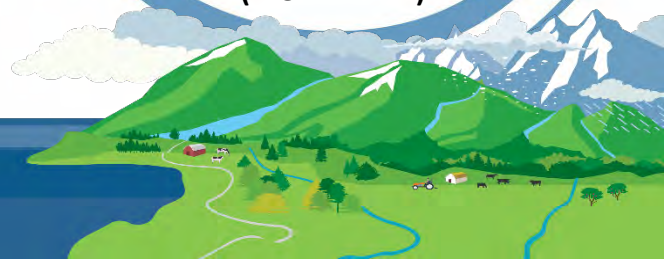


Included in Water Region (WR) 5-2 package:

1. CWMN WR5-2 sample sites
2. How to interpret a box plot
3. Box Plot Comparison – 2021 data to previous years: *displayed by parameter (Temperature, Dissolved Oxygen, Turbidity, Conductivity) & sample period (summer, fall)*
4. IWFF CWMN map of sample sites
5. CSS CWMN map of sample sites
6. VIU MABRRI map of sample sites



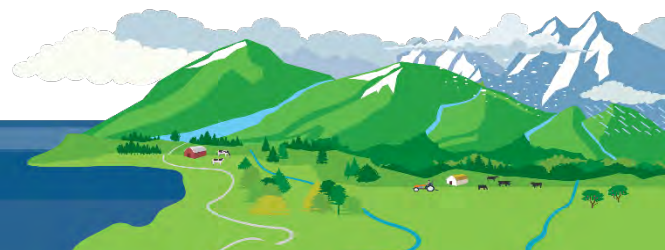
Water Region 5-2
sampled by:
Island Waters Fly Fishers (IWFF)
&
Cat Stream Stewards (CSS)
&
**Mount Arrowsmith Biosphere
Region Research Institute at
Vancouver Island University
(VIU MABRRI)**



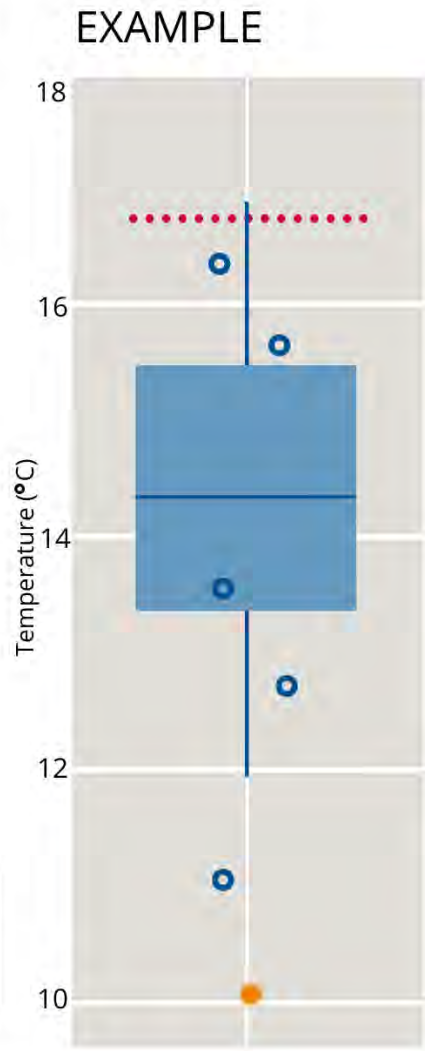
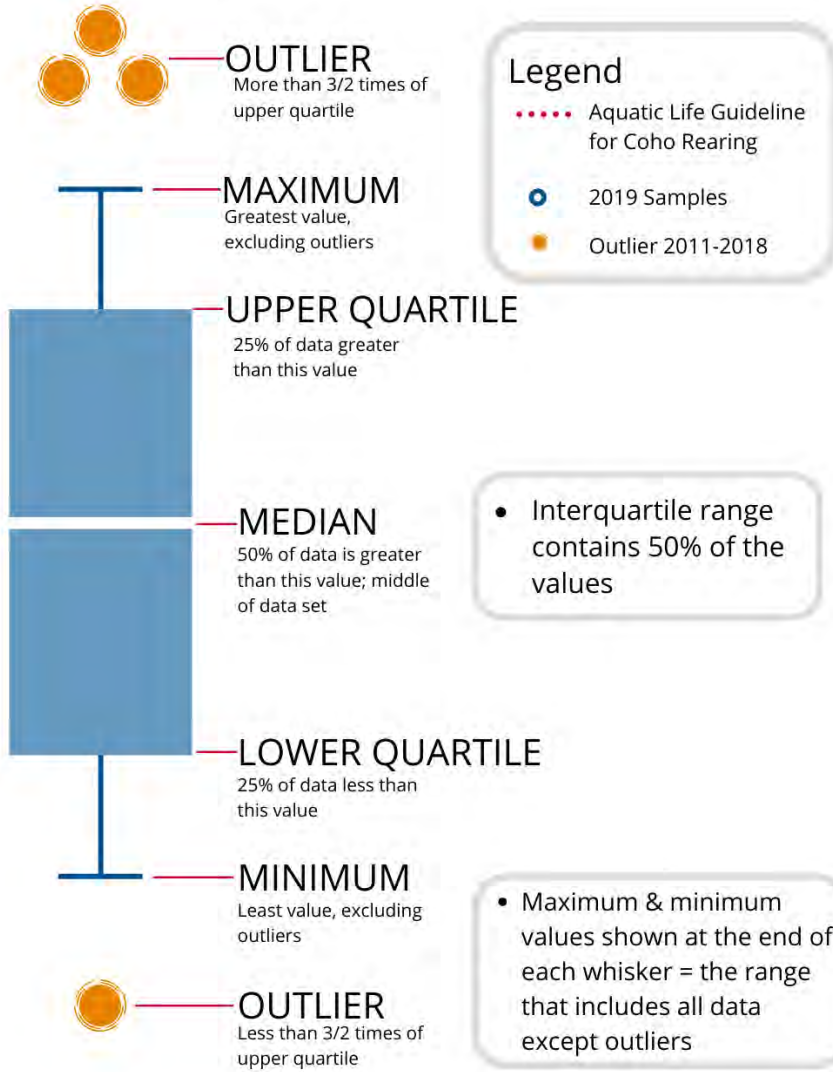
WR5-2 CWMN Sample Sites:

The table below shows the sites monitored by each of the streamkeeper organizations, as well as the number of years and which years a site was sampled. The number of years is important to keep in mind when interpreting the box plots as the plot for each site may contain a slightly different temporal range.

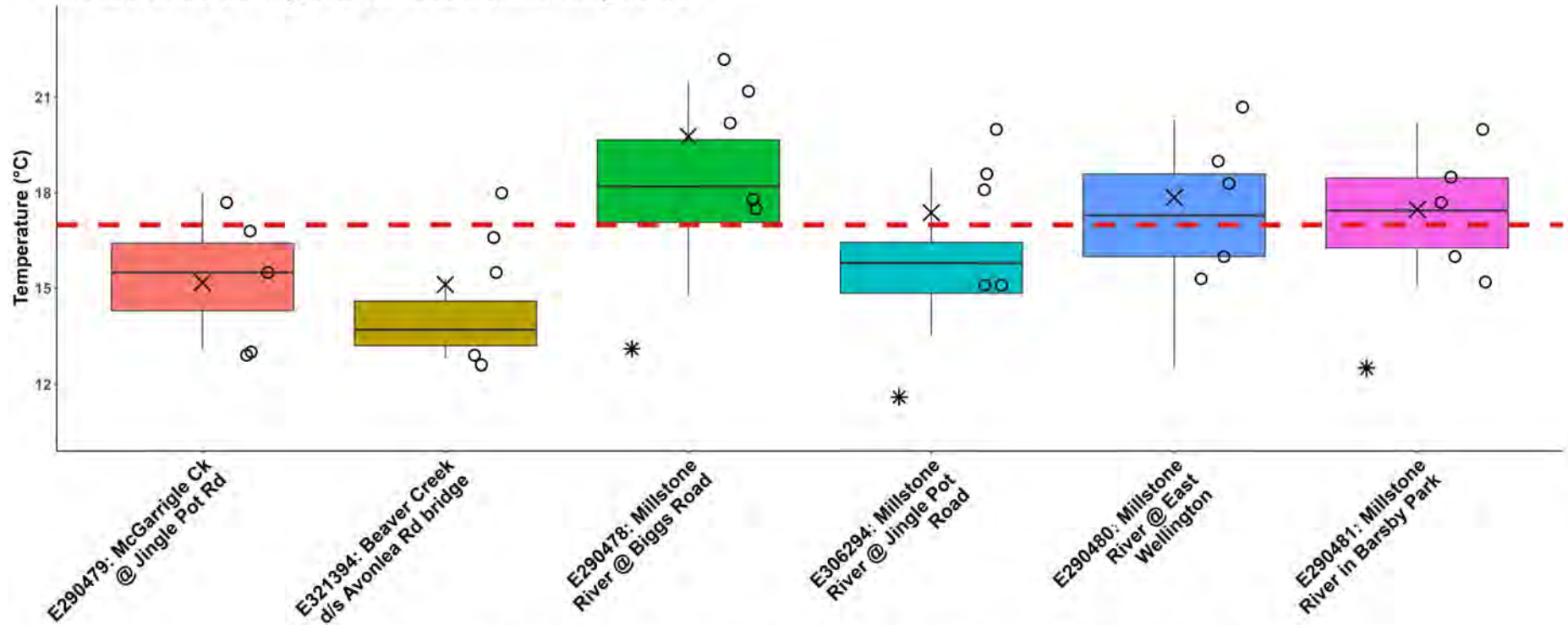
Group	EMS ID	Geographic Description	Years Sampled	Years Monitored
IWFF	E290478	Millstone River @ Biggs Road	10	2012 – present
IWFF	E321394	Beaver Creek d/s Avonlea Rd bridge	2	2020 – present
IWFF	E306294	Millstone River @ Jingle Pot Road	6	2016 – present
IWFF	E290479	McGarrigle Ck @ Jingle Pot Rd	10	2012 – present
IWFF	E290480	Millstone River @ East Wellington	10	2012 – present
IWFF	E290481	Millstone River in Barsby Park	10	2012 – present
CSS	E325371	Cat Stream d/s Wakesiah Ave	1	2021 – present
CSS	E325372	Cat Stream 10m u/s Pine St	1	2021 – present
CSS	E325373	Cat Stream at end of Albion St	1	2021 – present
VIU MABRRI	E290486	Cat Stream @ Park above confluence with Chase River	10	2012 – present
VIU MABRRI	E290484	Chase River @Howard below colliery dam	10	2012 – present
VIU MABRRI	E290485	Chase River @ Park Ave	10	2012 – present
VIU MABRRI	E290483	Chase River @ Aebig	10	2012 – present



How to Interpret a Box Plot:



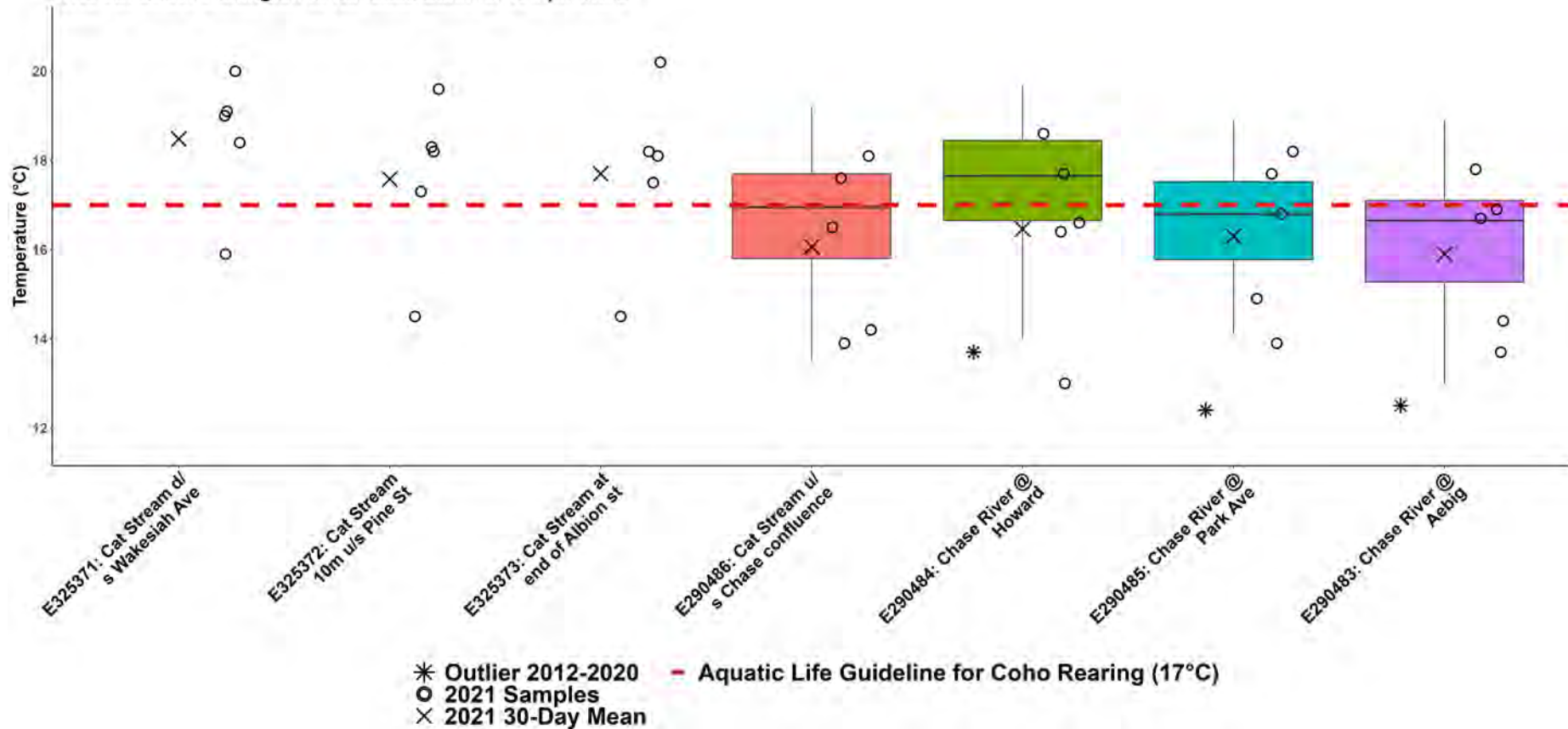
WR5-2a: South Wellington to Nanoose Summer Temperature



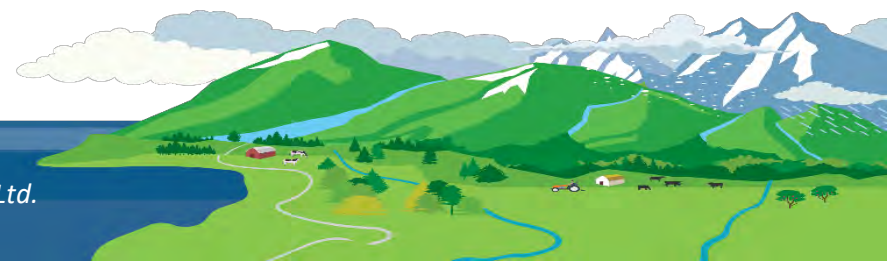
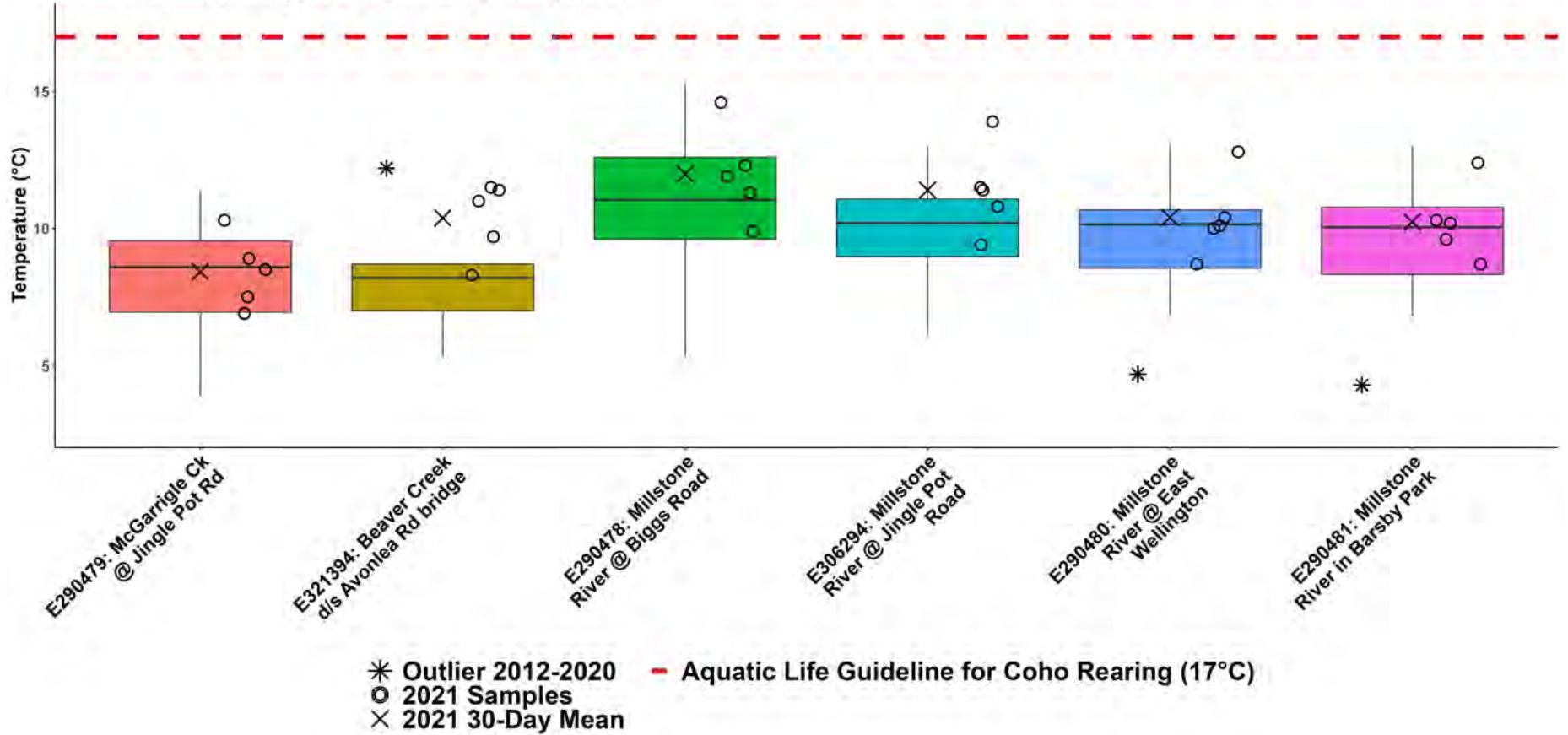
* Outlier 2012-2020 - Aquatic Life Guideline for Coho Rearing (17°C)
 ○ 2021 Samples
 × 2021 30-Day Mean



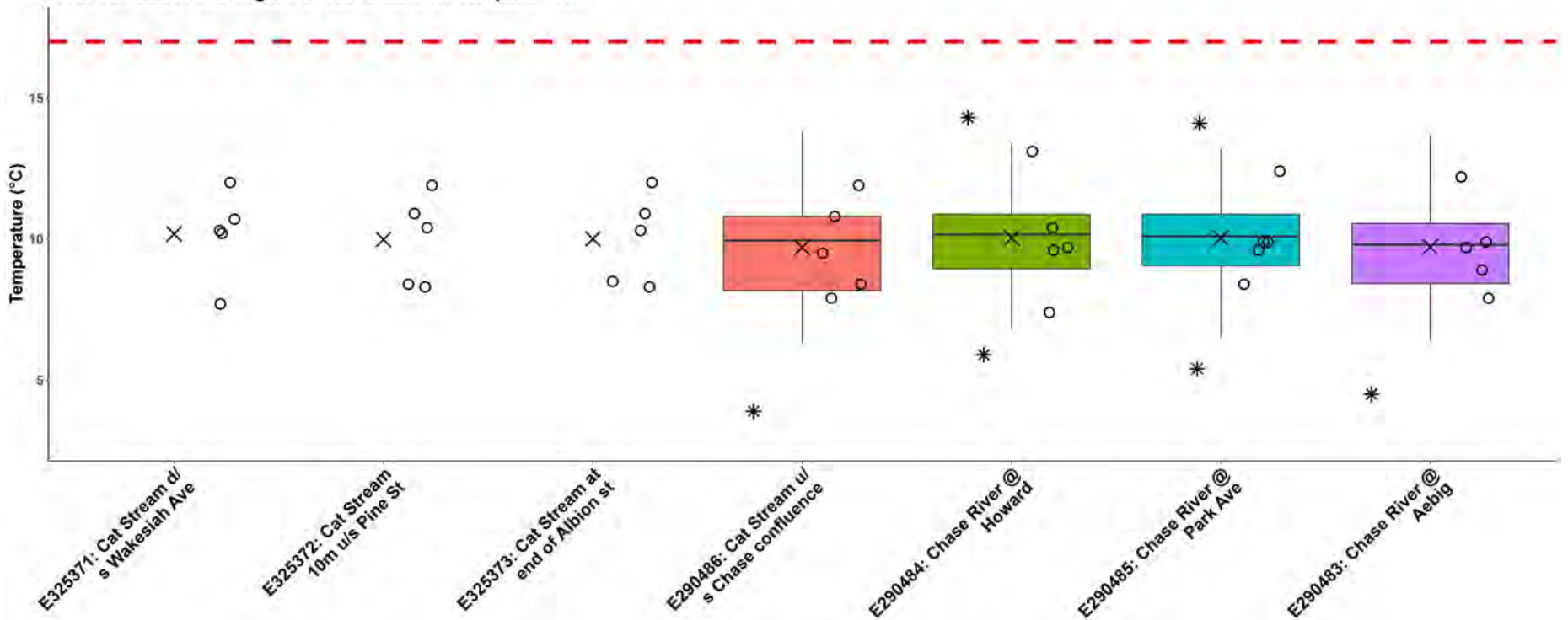
WR5-2b: South Wellington to Nanoose Summer Temperature



WR5-2a: South Wellington to Nanoose Fall Temperature



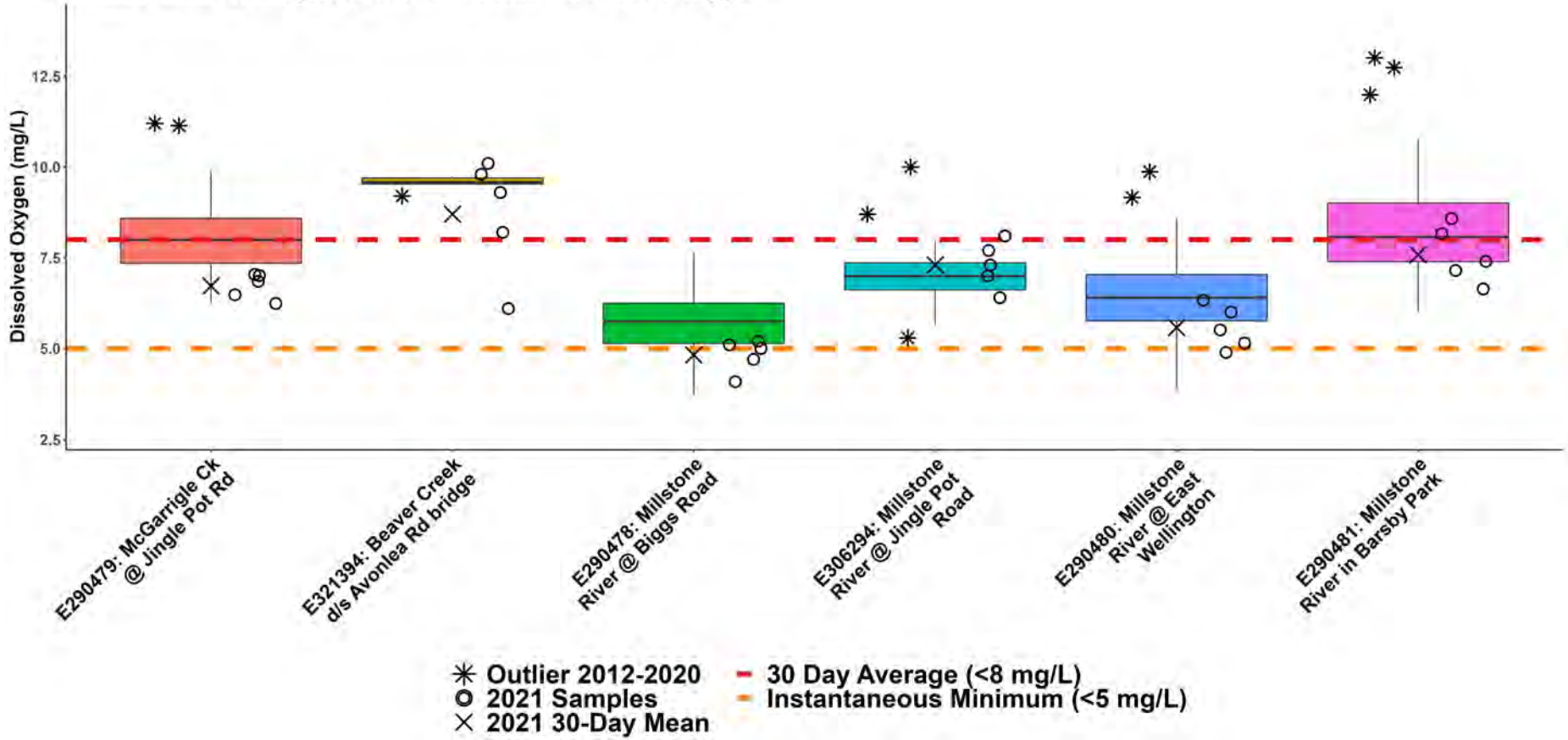
WR5-2b: South Wellington to Nanoose Fall Temperature



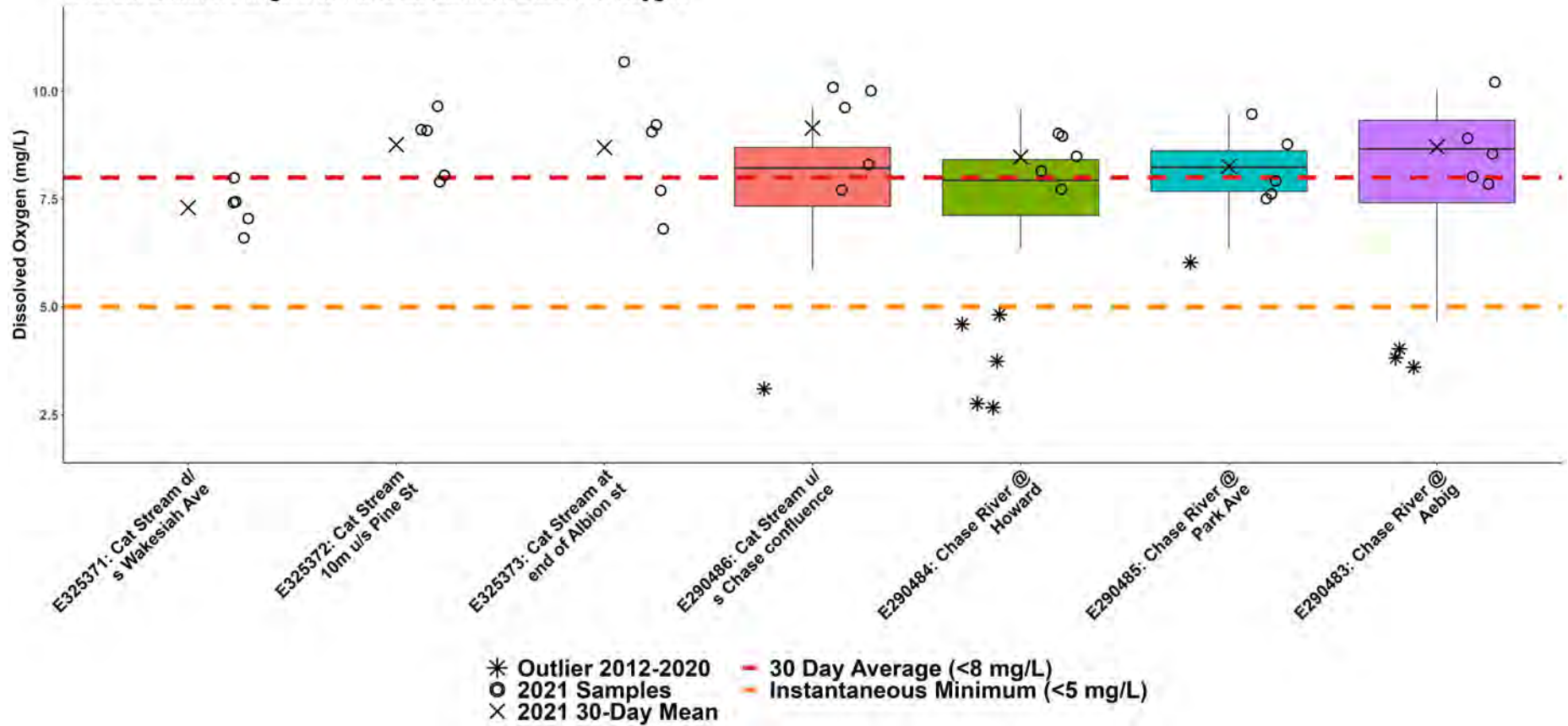
* Outlier 2012-2020 - Aquatic Life Guideline for Coho Rearing (17°C)
 ○ 2021 Samples
 × 2021 30-Day Mean



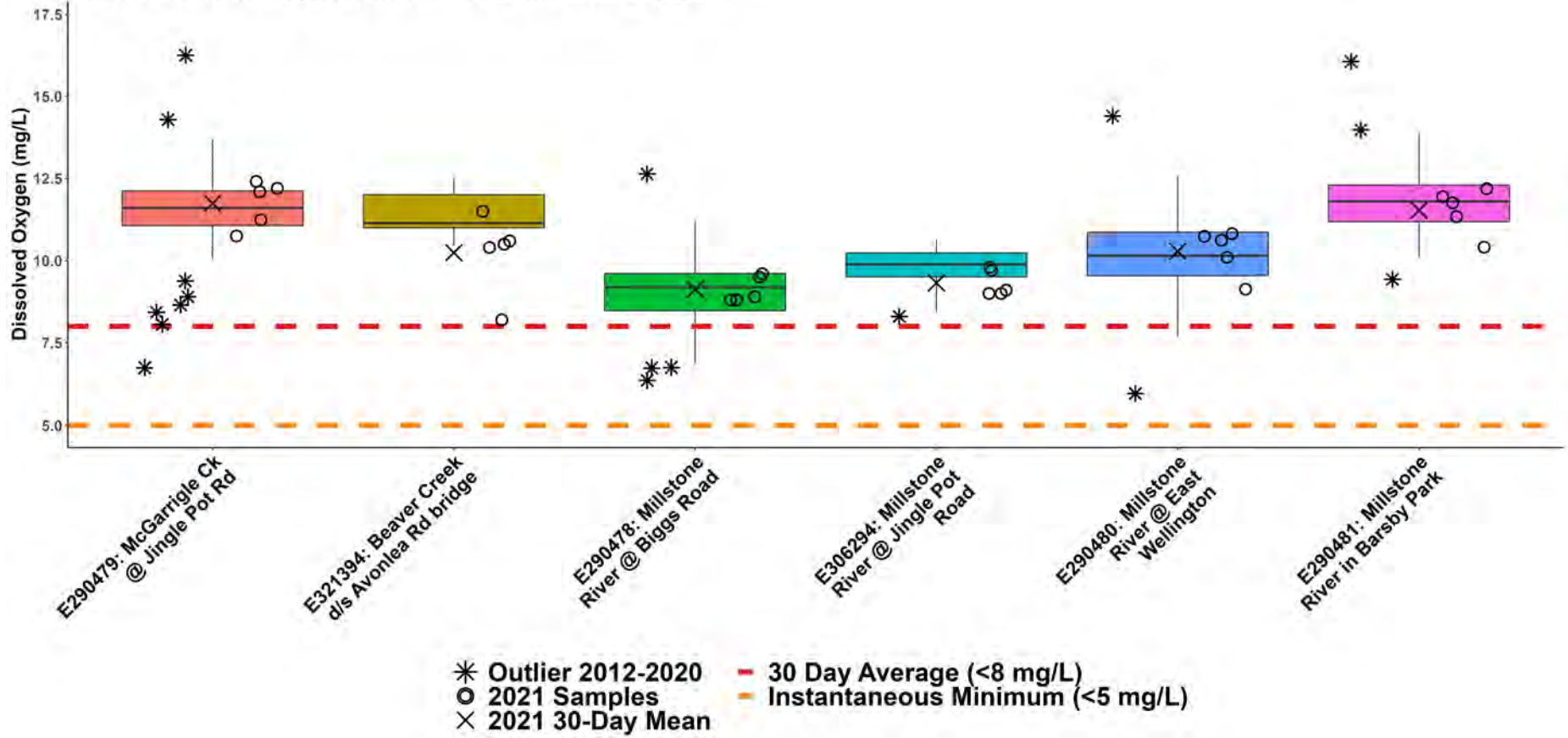
WR5-2a: South Wellington to Nanoose Summer Dissolved Oxygen



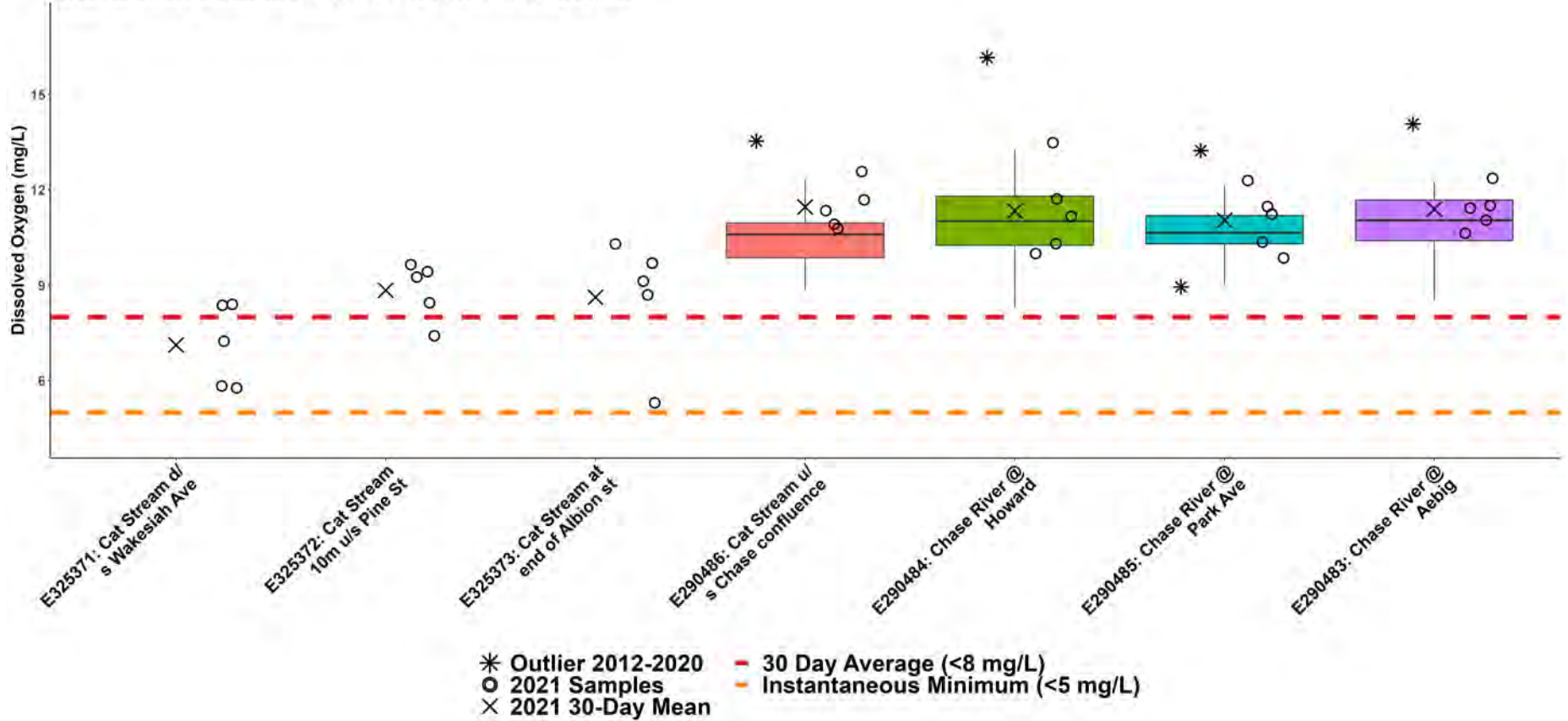
WR5-2b: South Wellington to Nanoose Summer Dissolved Oxygen



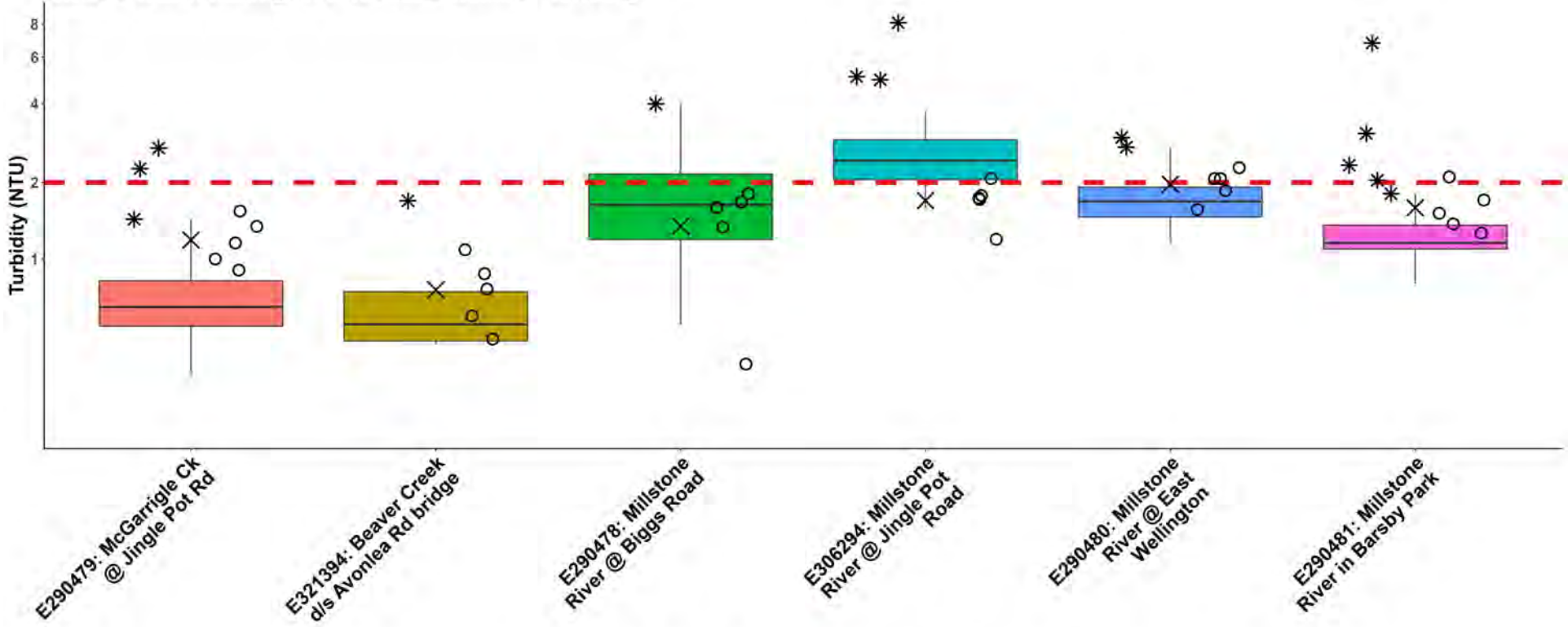
WR5-2a: South Wellington to Nanoose Fall Dissolved Oxygen



WR5-2b: South Wellington to Nanoose Fall Dissolved Oxygen



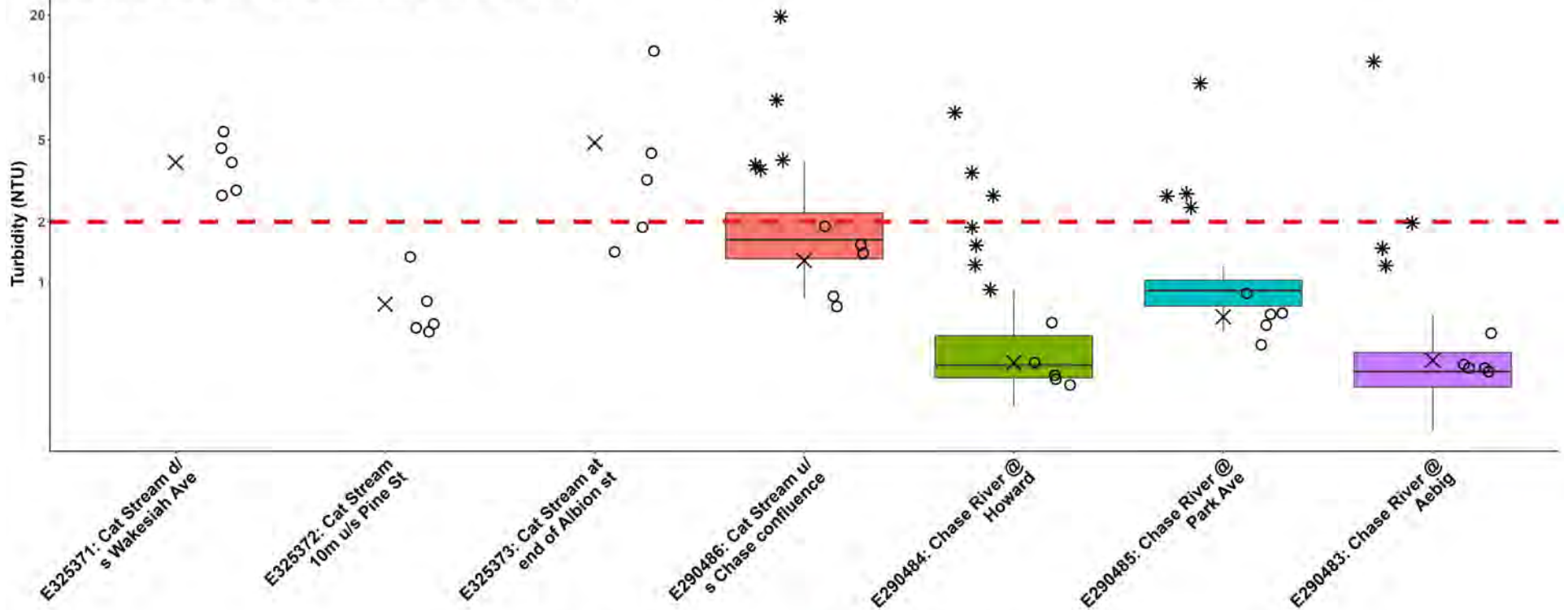
WR5-2a: South Wellington to Nanoose Summer Turbidity



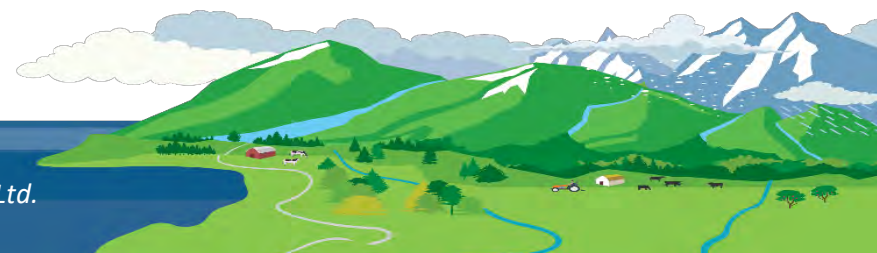
* Outlier 2012-2020
 o 2021 Samples
 x 2021 30-Day Mean
 - Jan-Sept Max (2 NTU)



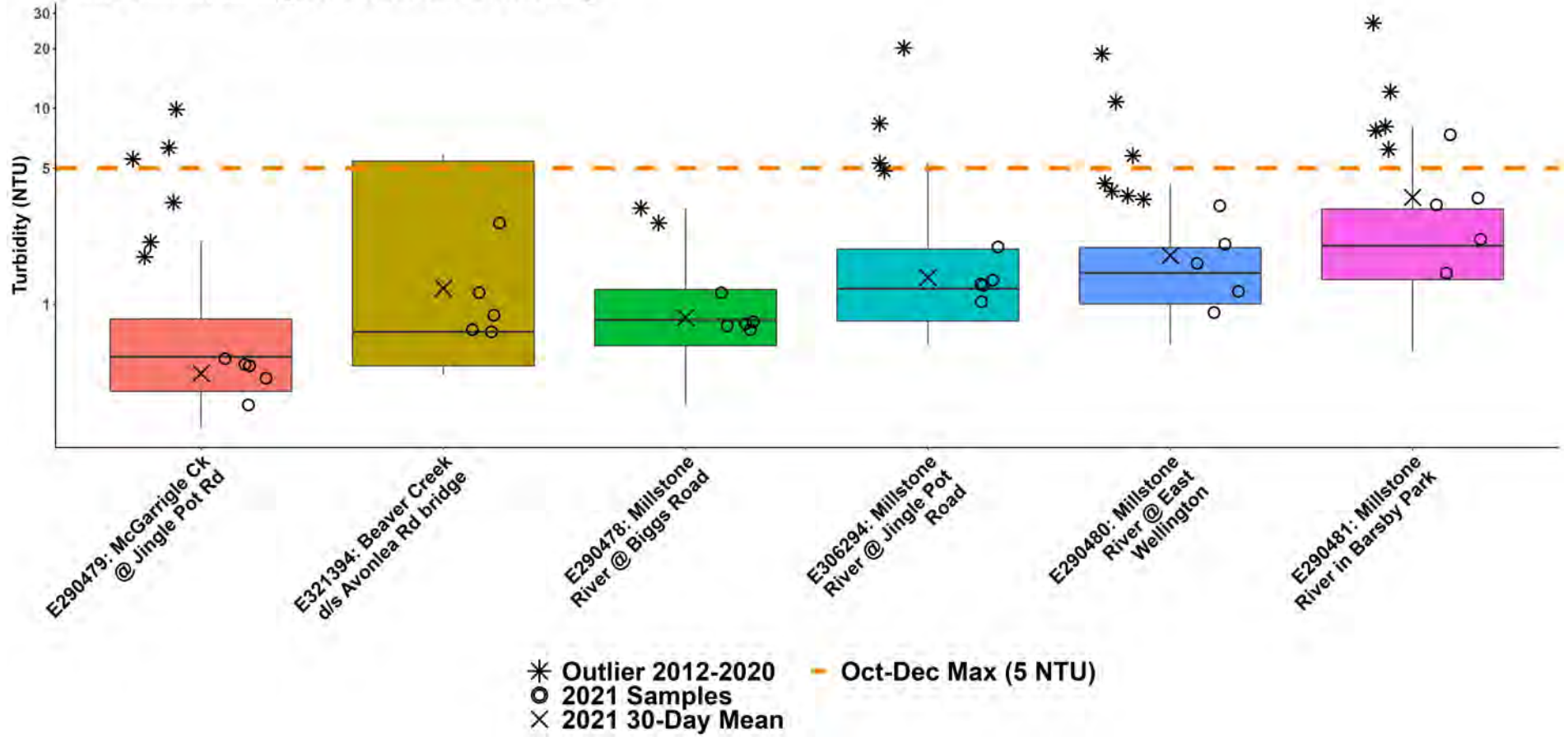
WR5-2b: South Wellington to Nanoose Summer Turbidity



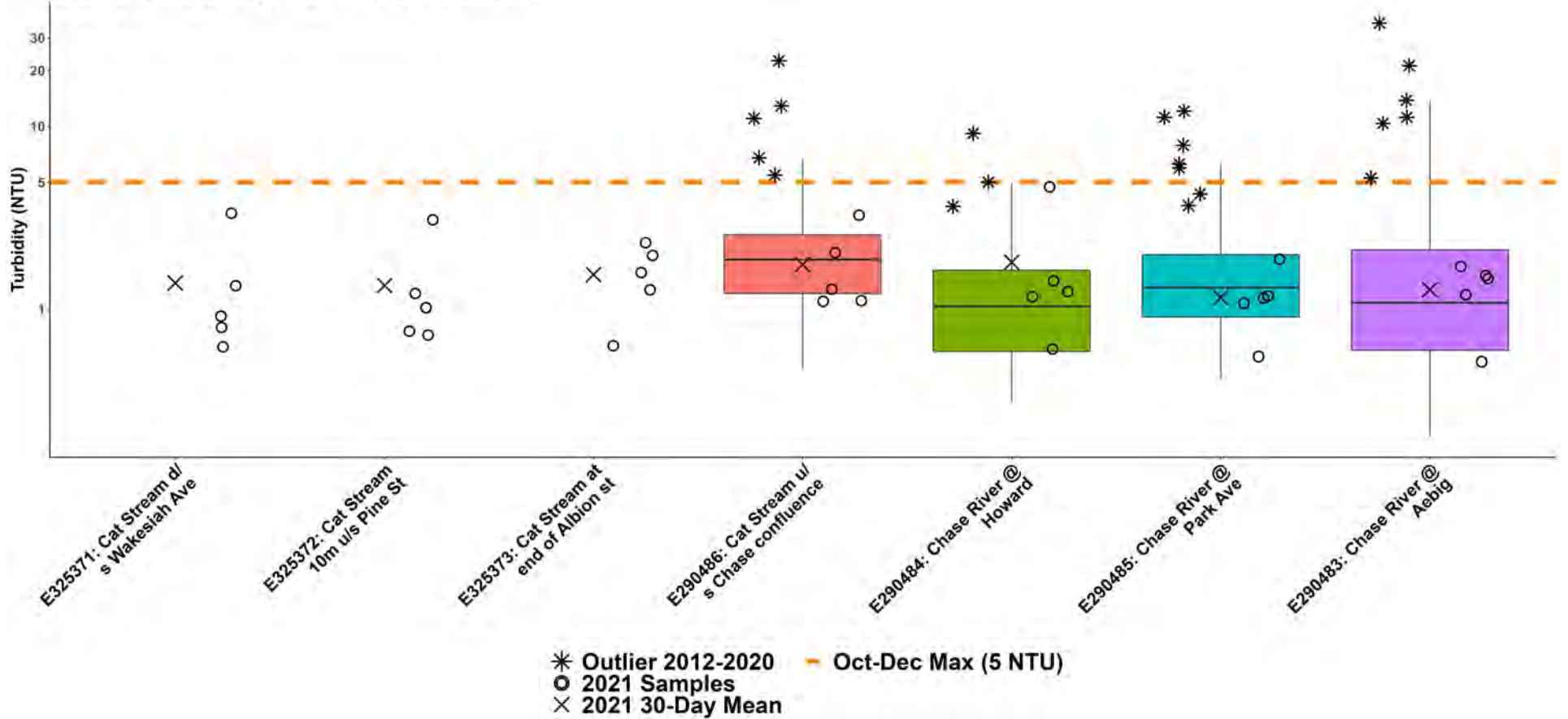
* Outlier 2012-2020
 O 2021 Samples
 X 2021 30-Day Mean
 - Jan-Sept Max (2 NTU)



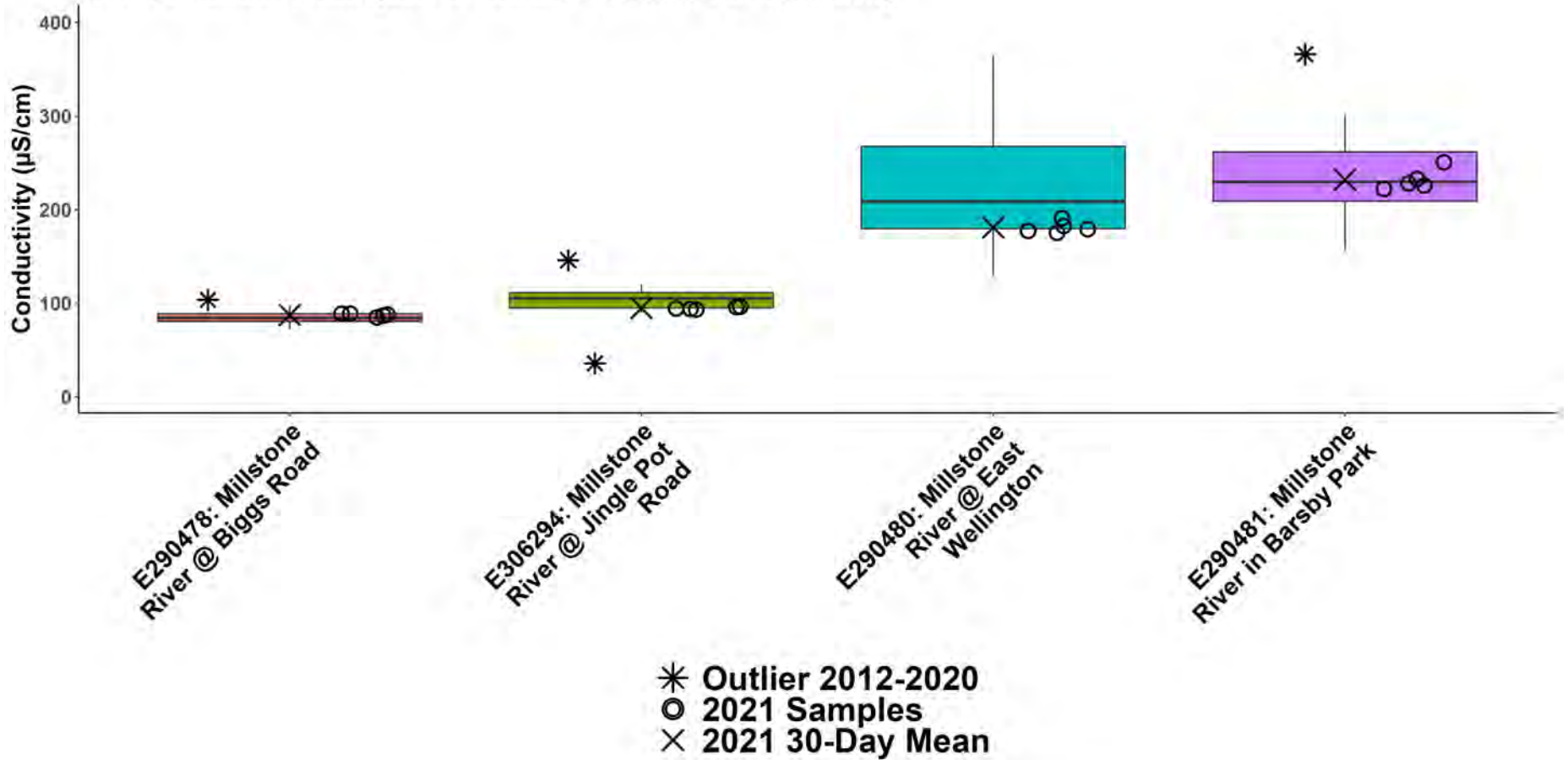
WR5-2a: South Wellington to Nanoose Fall Turbidity



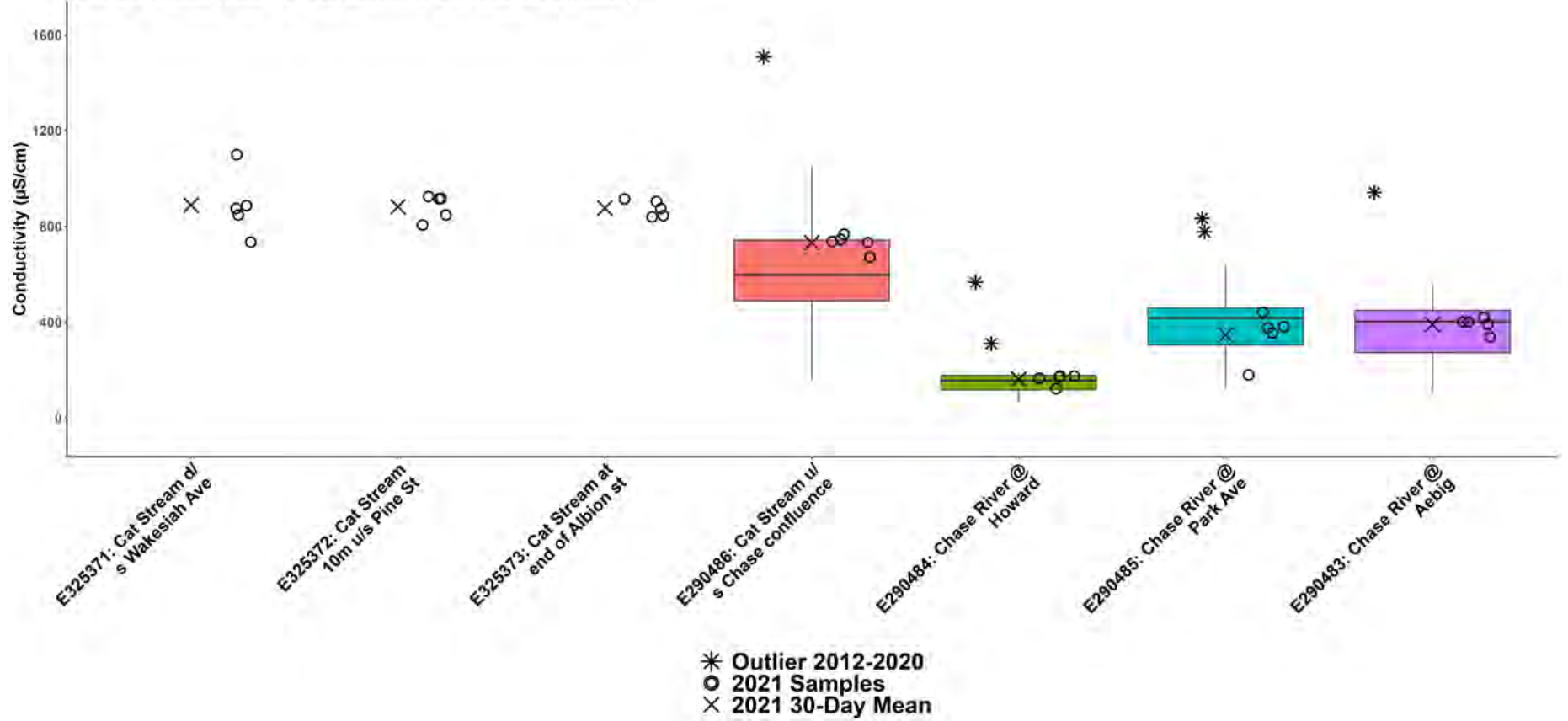
WR5-2b: South Wellington to Nanoose Fall Turbidity



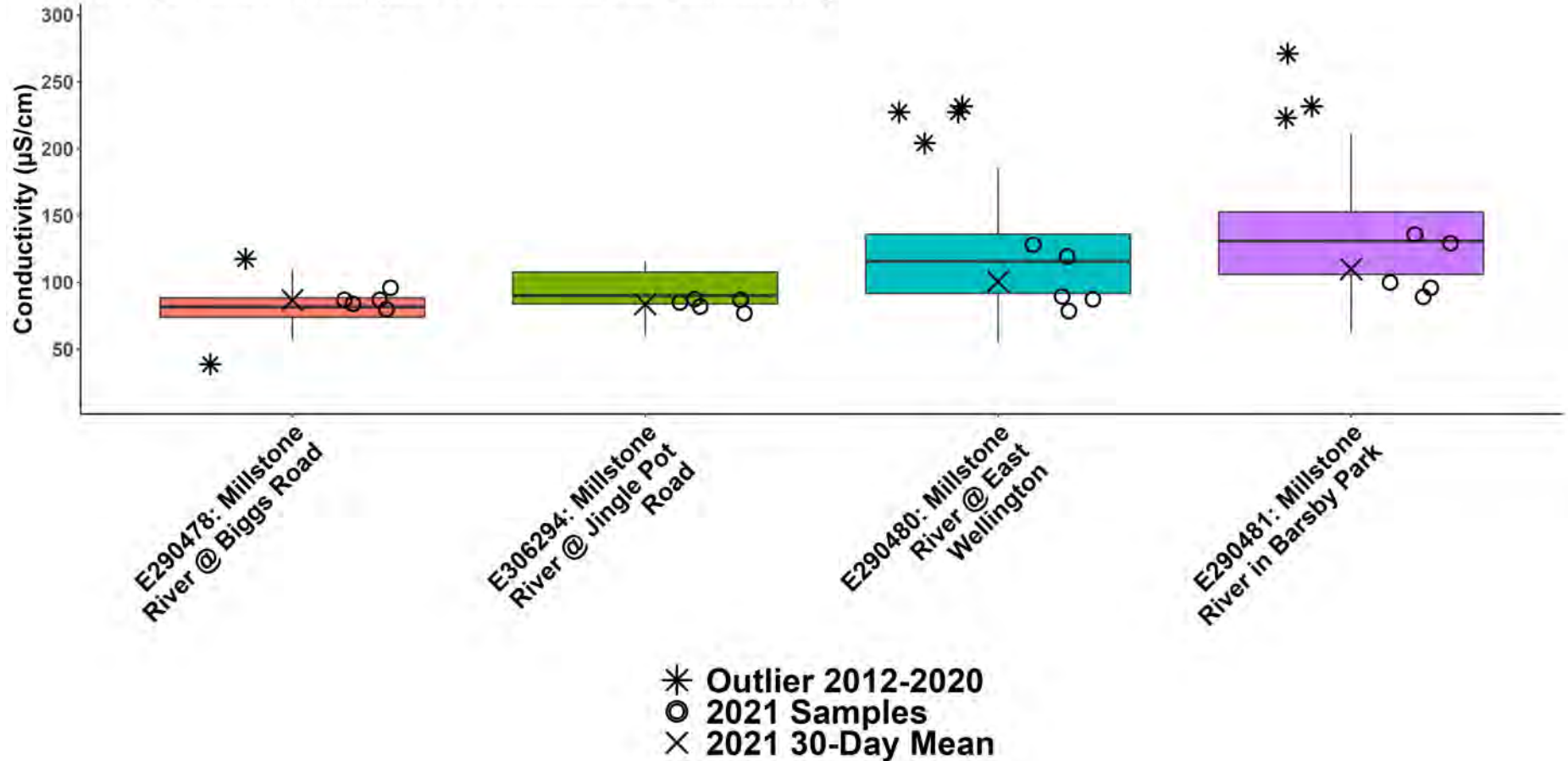
WR5-2a: South Wellington to Nanoose Summer Conductivity

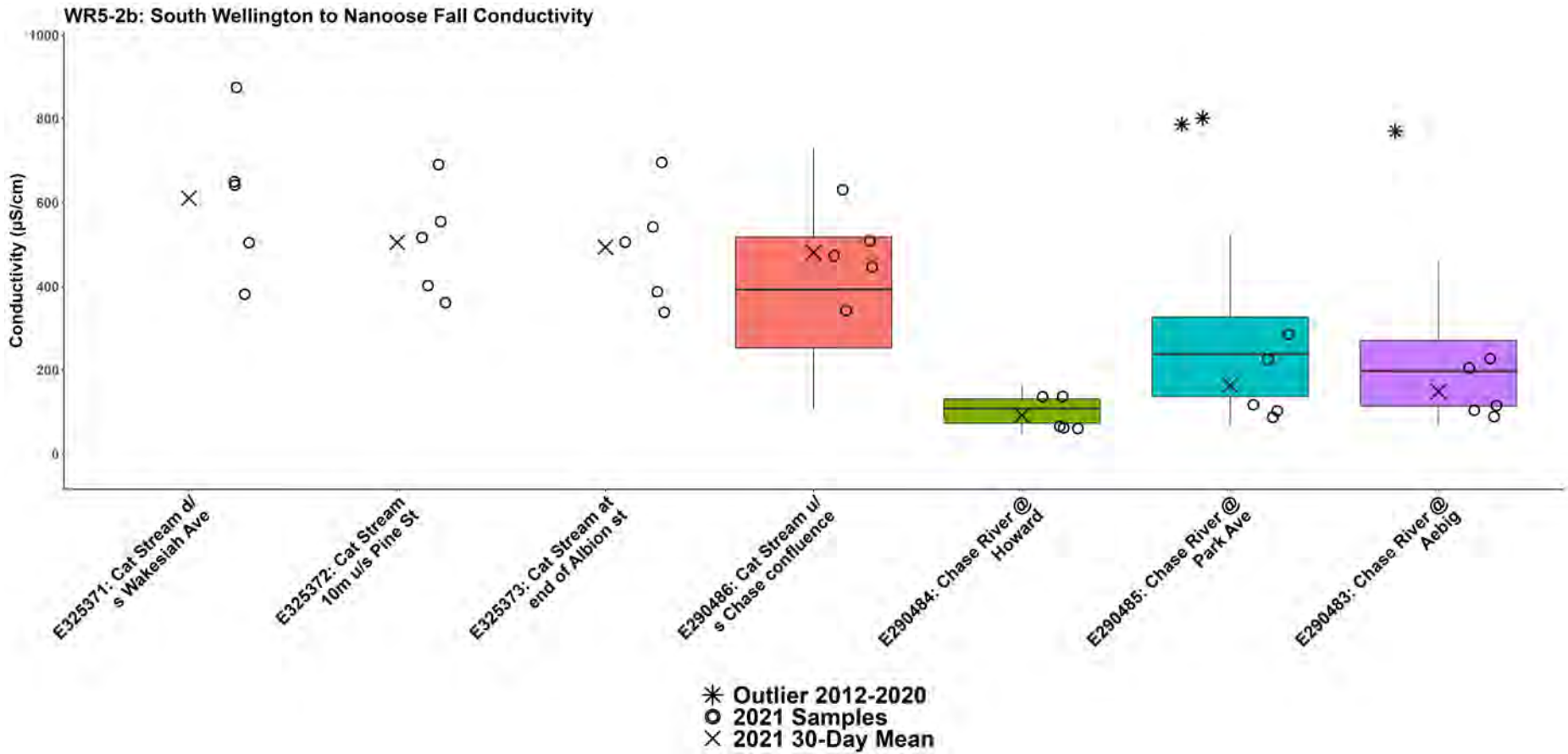


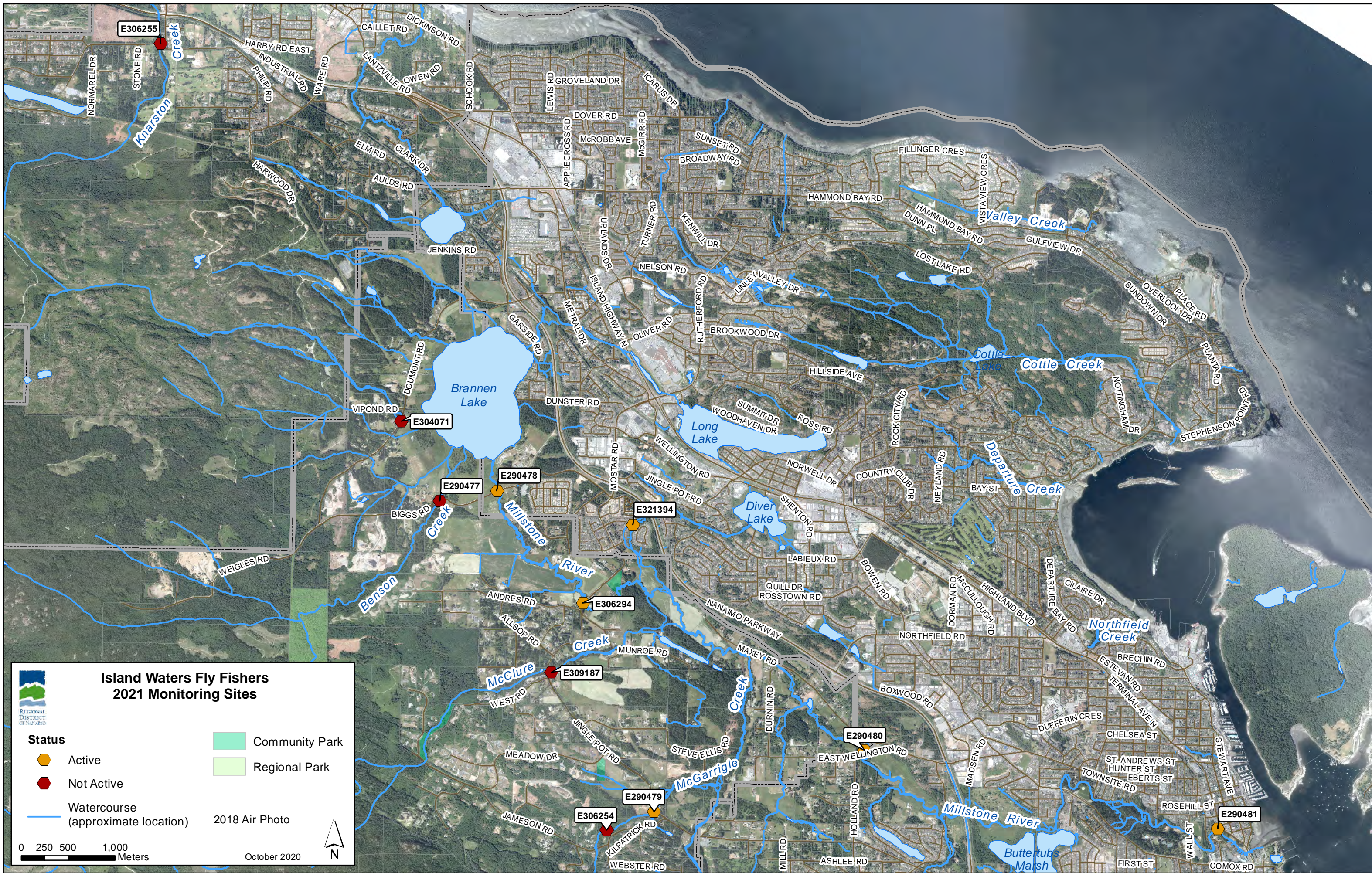
WR5-2b: South Wellington to Nanoose Summer Conductivity



WR5-2a: South Wellington to Nanoose Fall Conductivity







**Island Waters Fly Fishers
2021 Monitoring Sites**



- | | |
|---------------------------------------|----------------|
| Status | Community Park |
| Active | Regional Park |
| Not Active | |
| Watercourse
(approximate location) | 2018 Air Photo |

0 250 500 1,000
Meters

October 2020








**Cat Stream Stewardship Group
2021 Monitoring Sites**

REGIONAL DISTRICT OF NANAIMO

Status

-  Active
-  Not Active

 Watercourse (approximate location)

2020 Air Photo

0 100 200 400 Meters

July 2021

N



E290484

E290486

E290485

E290483

E309280

E290487

Colliery Dam

Cat Stream

Chase River

Beck Creek

