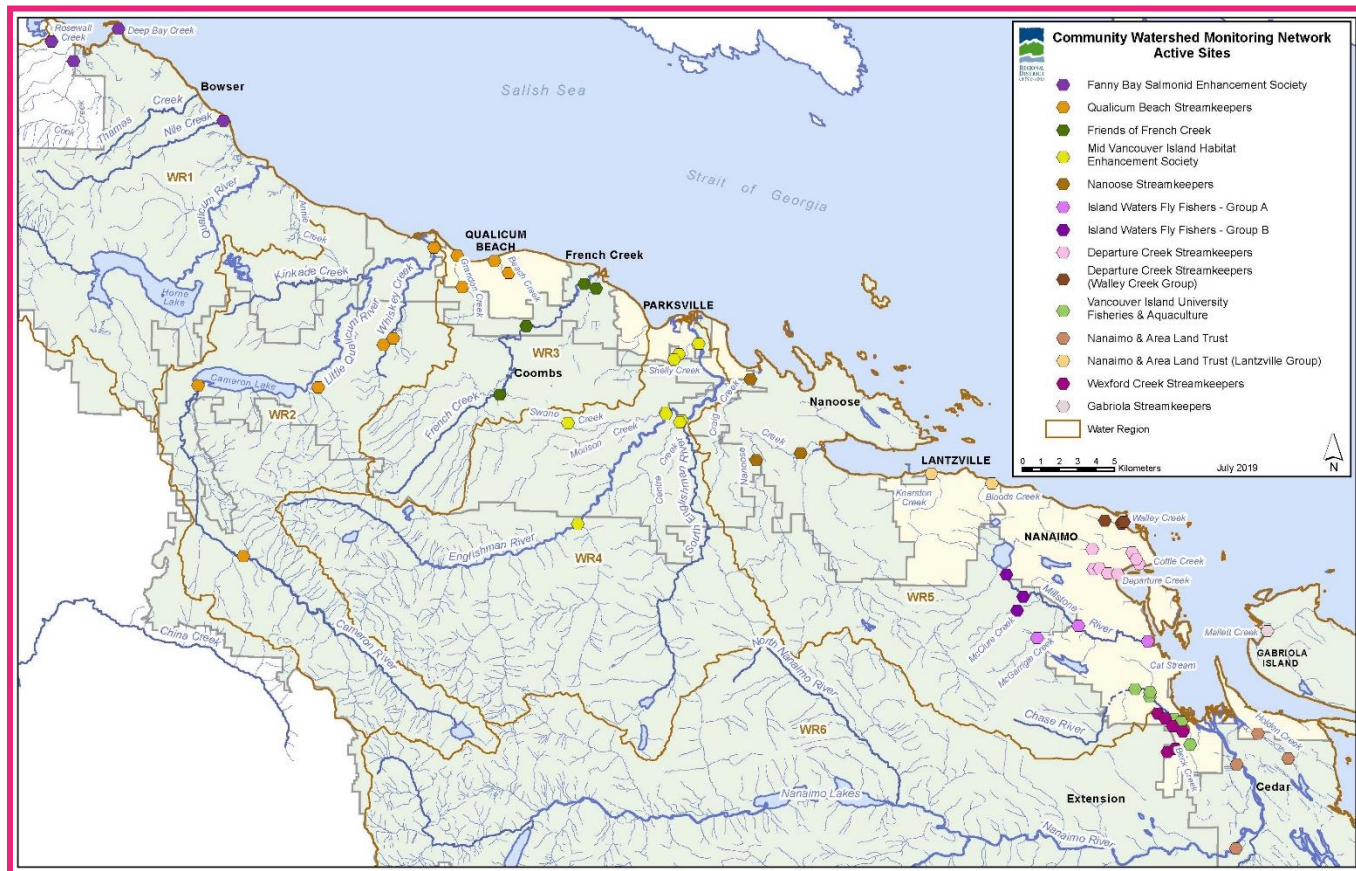


Community Watershed Monitoring Network 2019

Results by Water Region



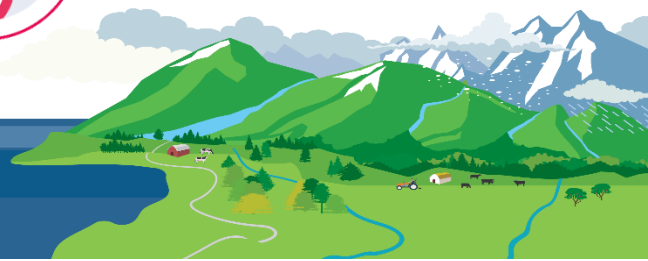
Included in your Water Region package:

1. CWMN sample sites in Water Region (WR) 5-1
2. How to interpret a box plot
3. Box Plot Comparison 2019 data to previous years:
Graphs displayed per parameter (Temperature, Dissolved Oxygen, Turbidity, Conductivity) per sample period (summer and fall)
4. LNS CWMN map of sample sites
5. DCS CWMN map of sample sites
6. WCS CWMN map of sample sites



Water Region 5-1
sampled by:

**Nanose Streamkeepers Society
and Lantzville Streamkeepers
(LNS),
Departure Creek Streamkeepers
(DCS)
&
Walley Creek Streamkeepers
(WCS)**



CWMN Sample Sites in WR 5-1:

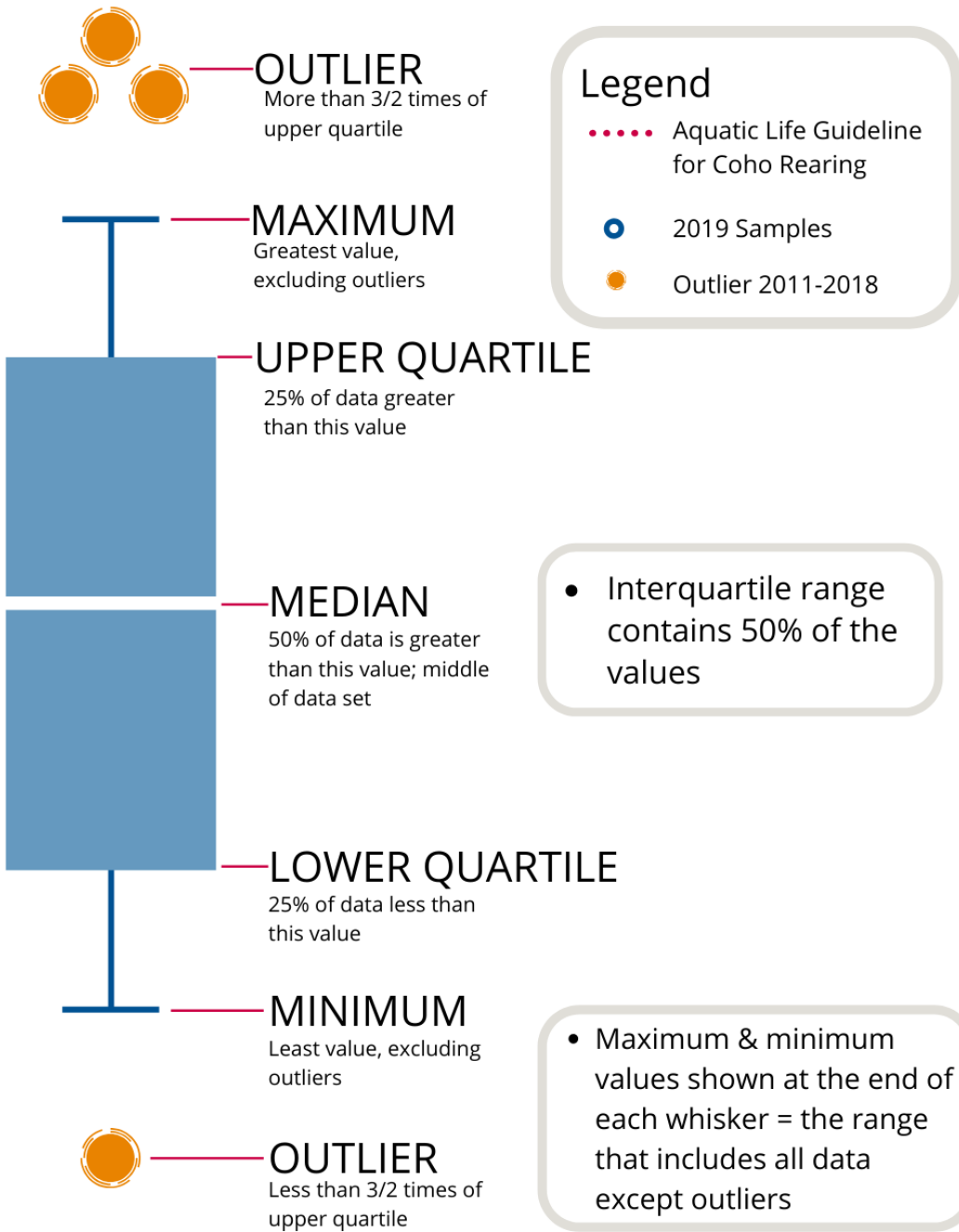
The table below shows the group(s) and sites monitored, as well as the number of years and which years a site was sampled. The number of years is important to keep in mind when interpreting the box plots as the plot for each site may contain a slightly different temporal range.

Group	EMS ID	Geographic Description	Years Sampled*	Years Monitored
LNS	E294010	Bloods Creek just u/s Dickenson Rd	2.75	2013 partial; fall 2017 - present
LNS	E294013	Knarston Ck just u/s Lantzville Rd	2.75	2013 partial; fall 2017 - present
LNS	E294017	Craig Creek just u/s Northwest Bay Rd	6.25	2013 partial; 2014 - present
LNS	E294019	Nanoose Creek @ Nanoose Campground	6.25	2013 partial; 2014 - present
LNS	E294020	Nanoose Creek @ Matthew Crossing	6.25	2013 partial; 2014 - present
DCS	E290469	Departure Ck @ Neyland Rd (Stn1)	8	2012 - present
DCS	E290470	Josephs Ck (Dept Ck trib) off Newton (Stn 2)~	8	2012 - present
DCS	E290471	Departure Ck in Woodstream Park (Stn 3)	8	2012 - present
DCS	E290472	Departure Ck @ outlet (Stn 4)	8	2012 - present
DCS	E290473	Cottle Creek @ Nottingham	8	2012 - present
DCS	E309186	Cottle Creek d/s of Hammond Bay Road	3	2017 - present
DCS	E290475	Cottle Creek @ Stephenson Pt Rd	8	2012 - present
WCS	E306256	Walley Ck d/s Hammond Bay	4	2016 - present
WCS	E306257	Walley Ck @ Morningside Dr	4	2016 - present
WCS	E306434	Walley Creek 20m u/s beach	4	2016 - present
WCS	E318233	Walley Ck 100 m d/s McGuffie Rd	1	2019 - present

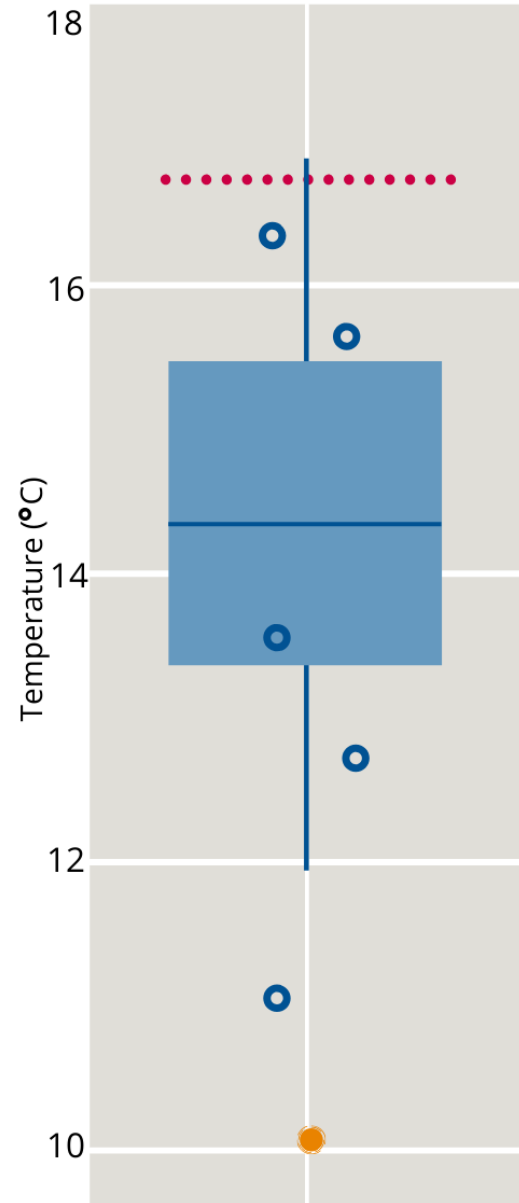
*The number of years sampled up to and including 2019.



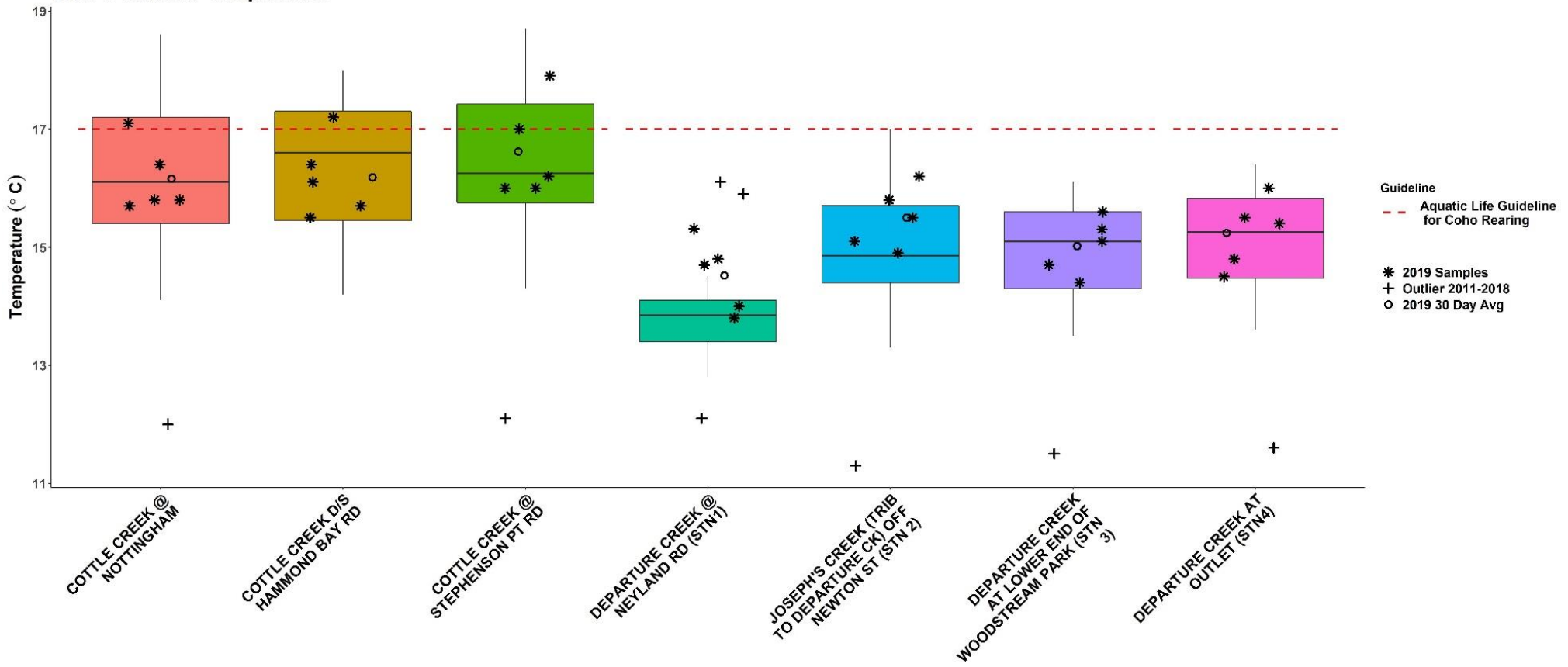
How to Interpret a Box Plot:



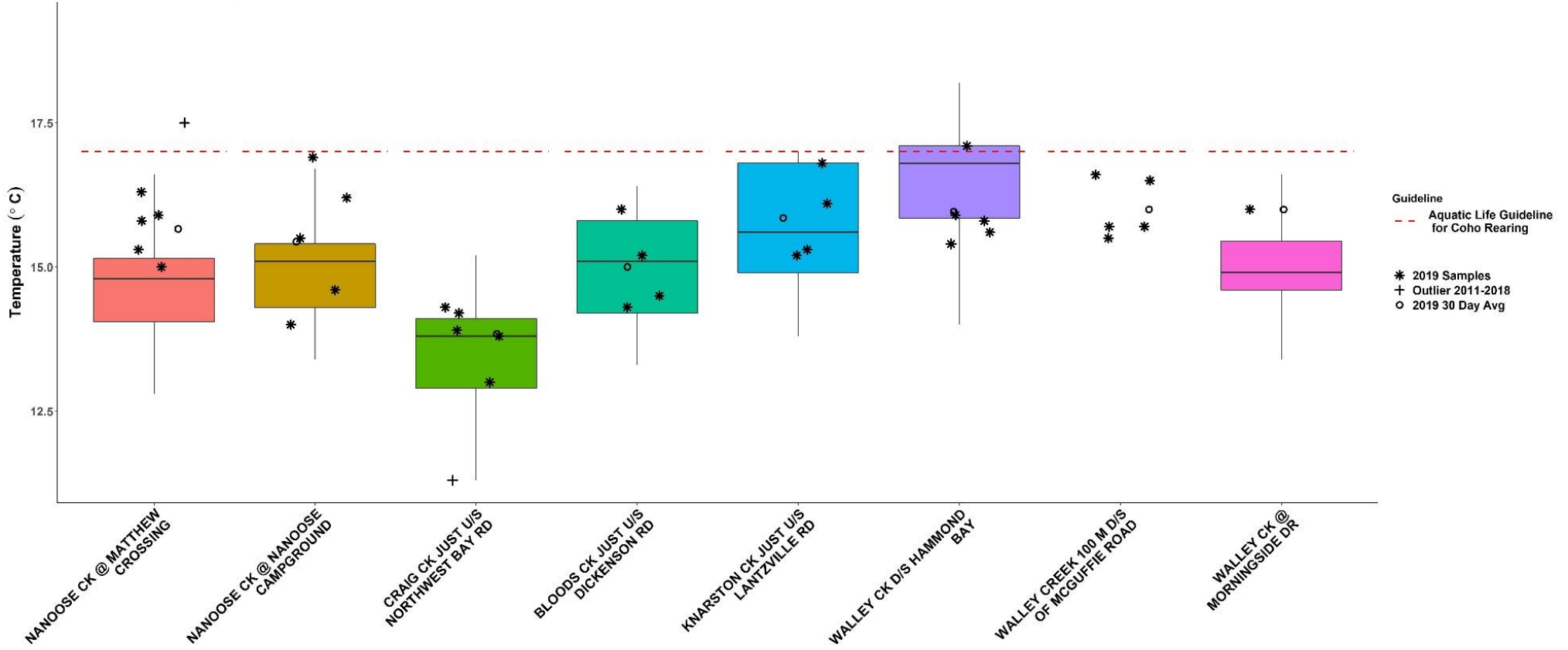
EXAMPLE



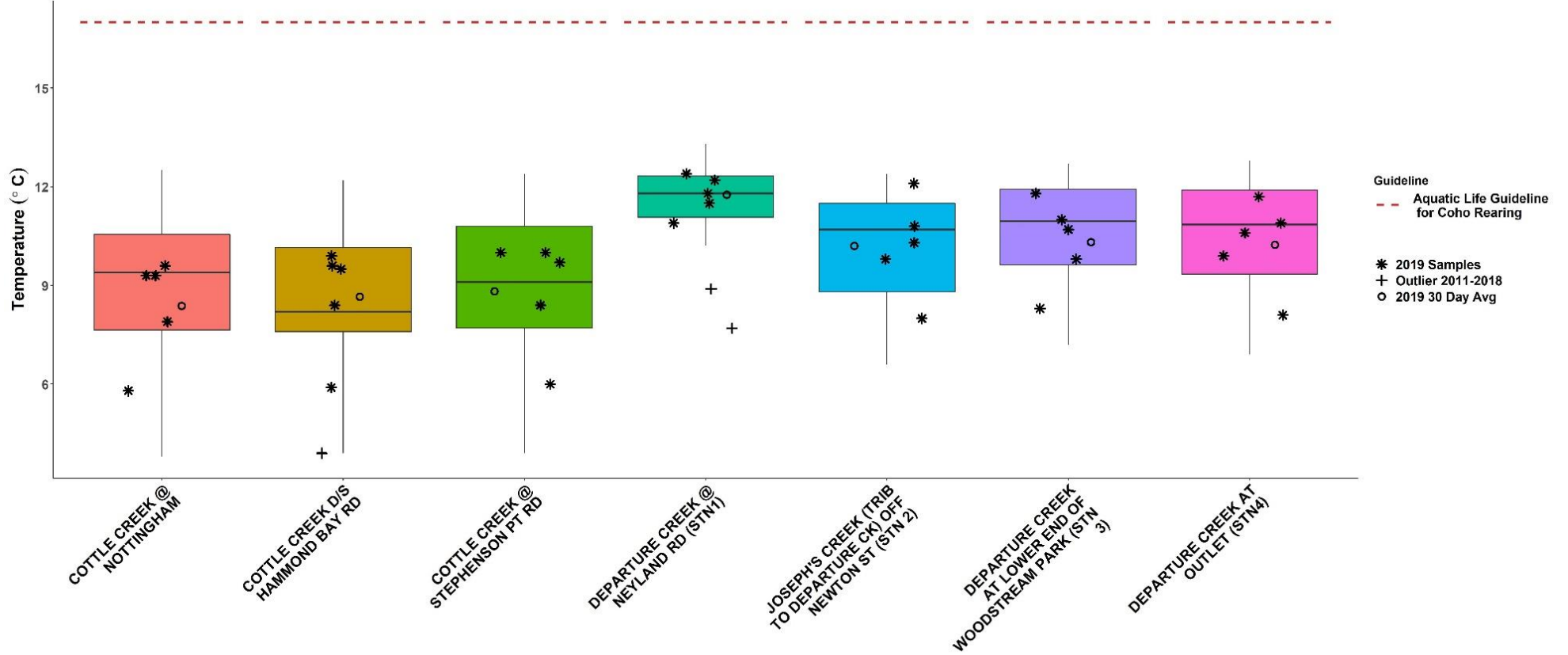
WR5-1 Summer Temperature



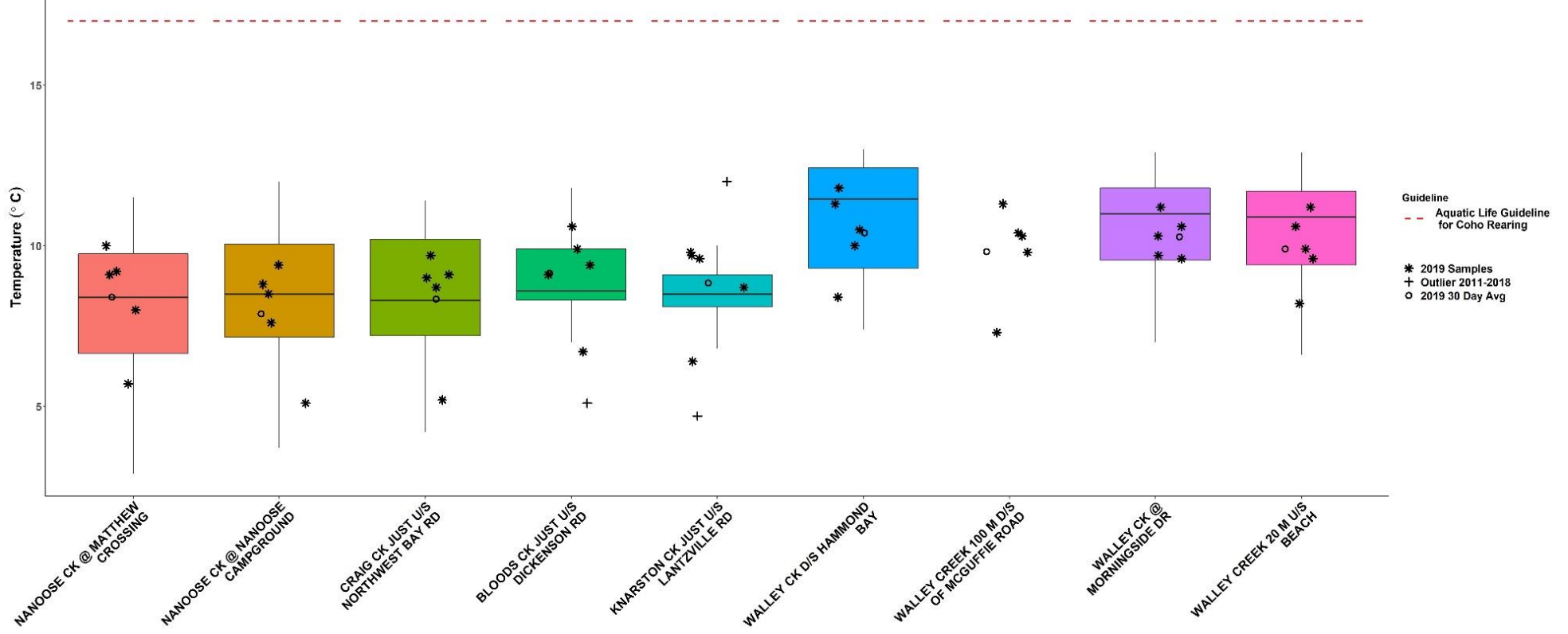
WR5-1 Summer Temperature



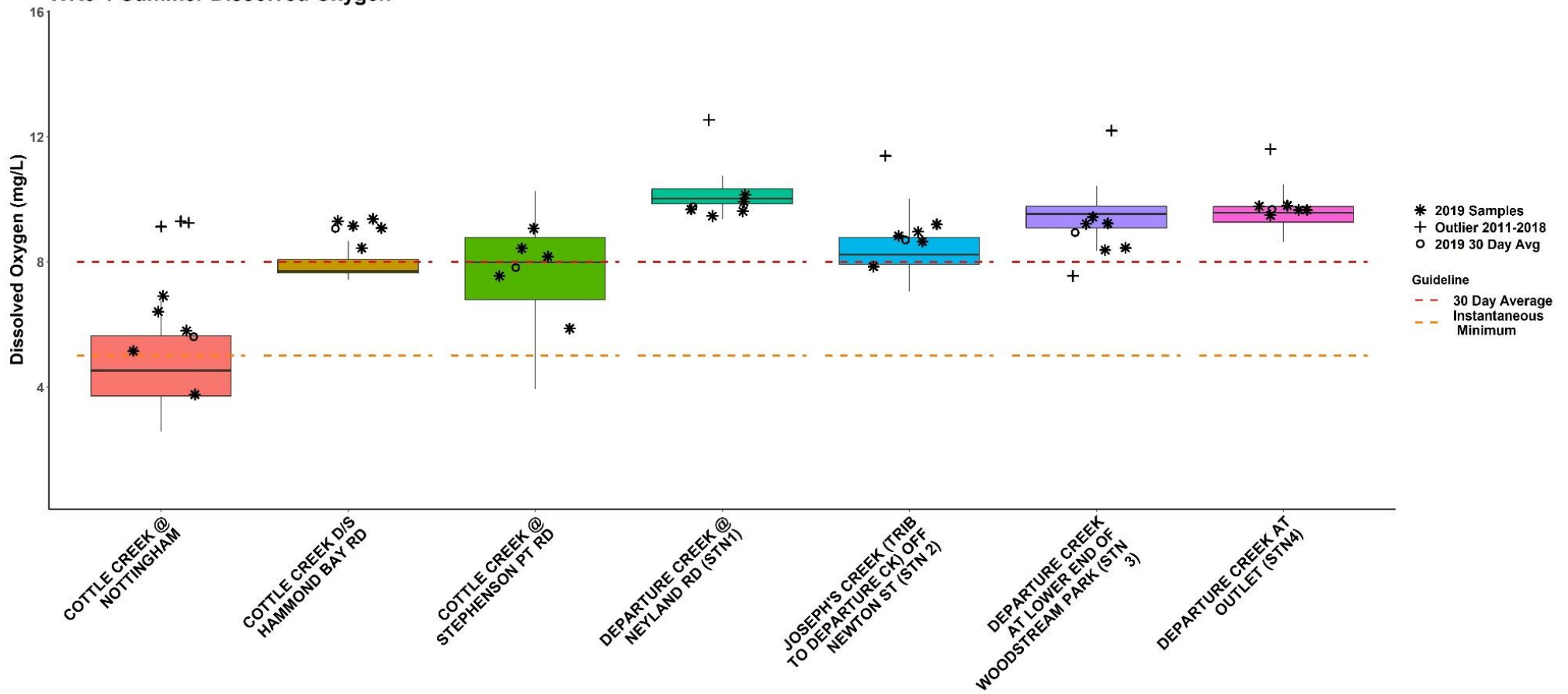
WR5-1 Fall Temperature



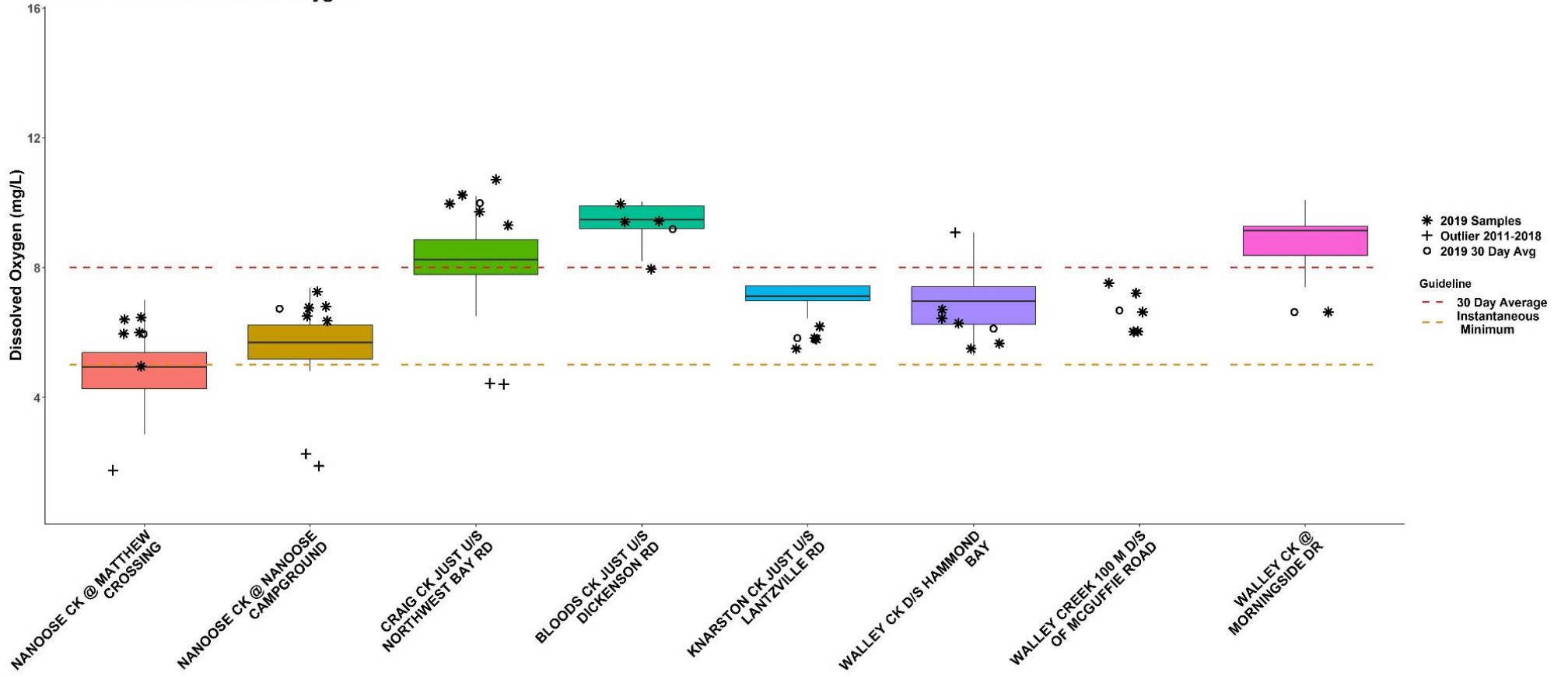
WR5-1 Fall Temperature



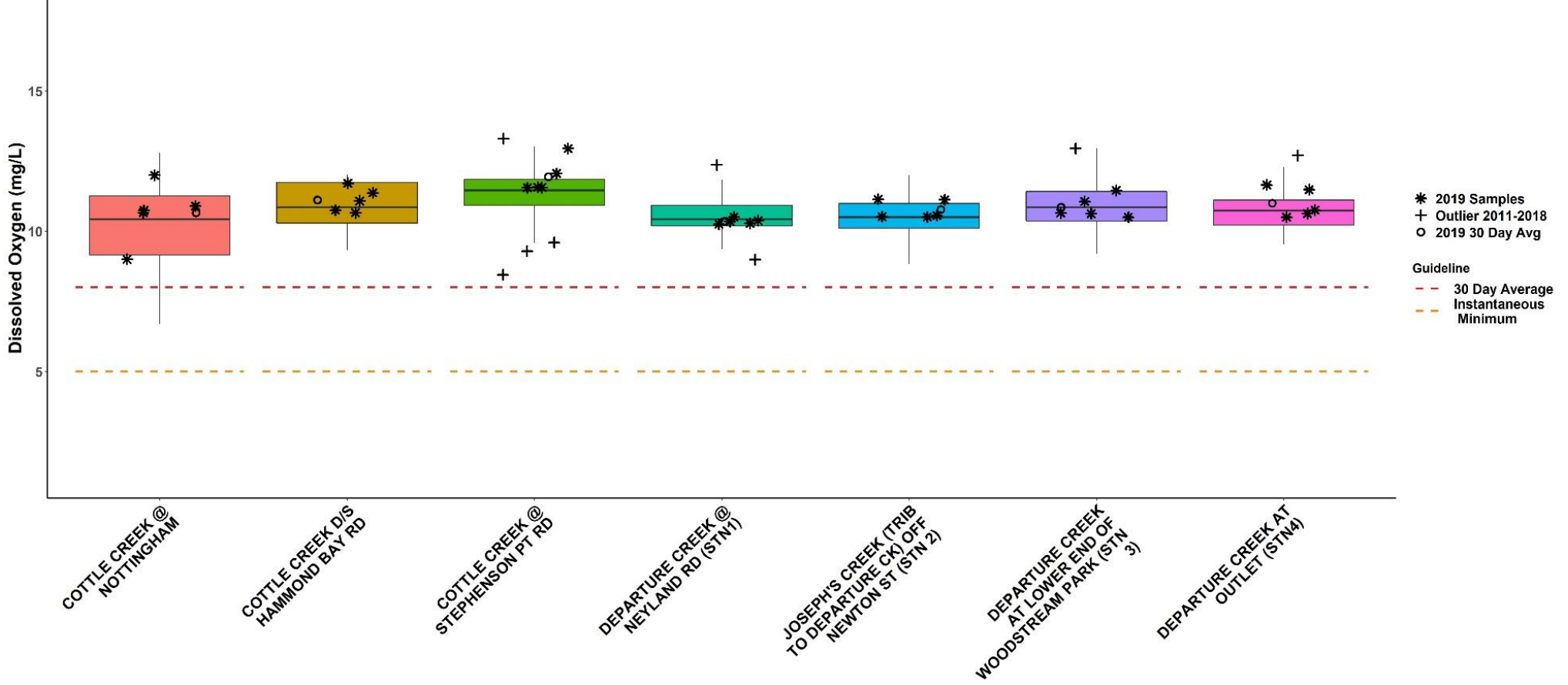
WR5-1 Summer Dissolved Oxygen



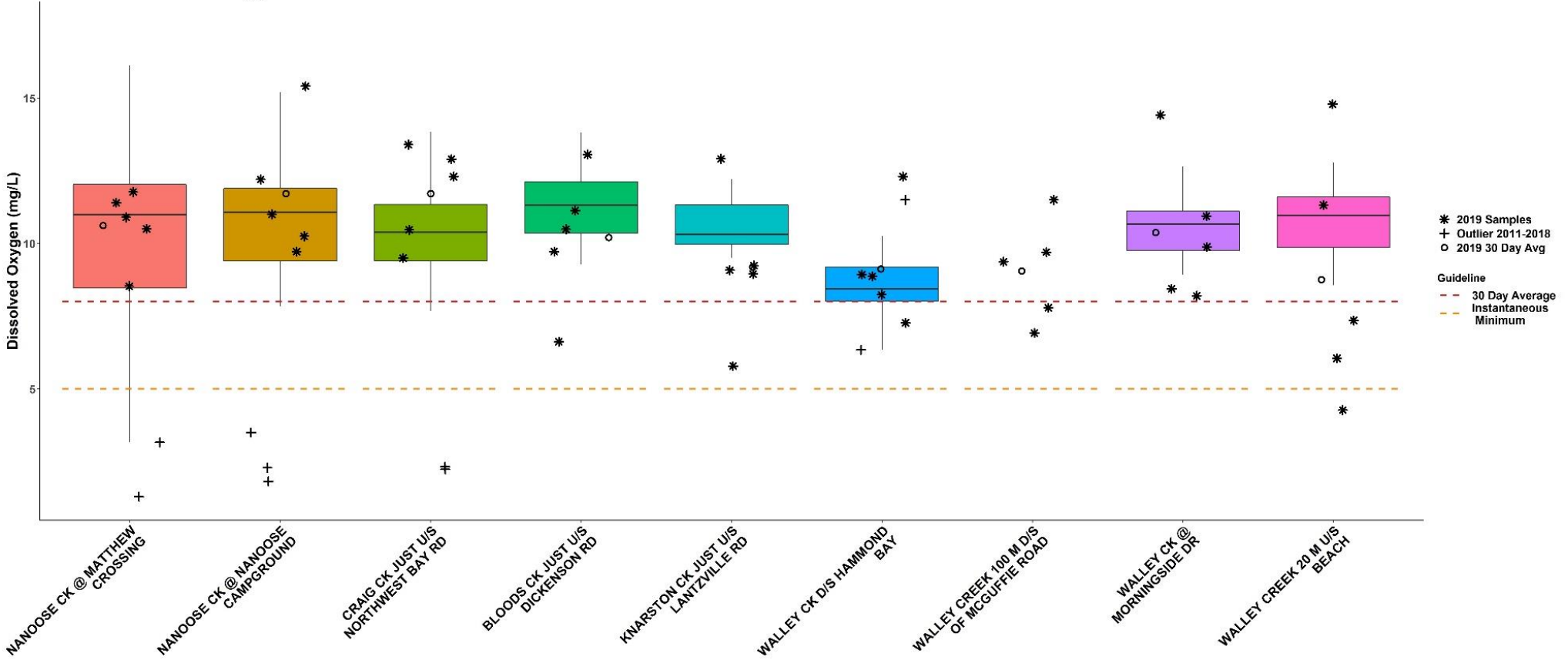
WR5-1 Summer Dissolved Oxygen



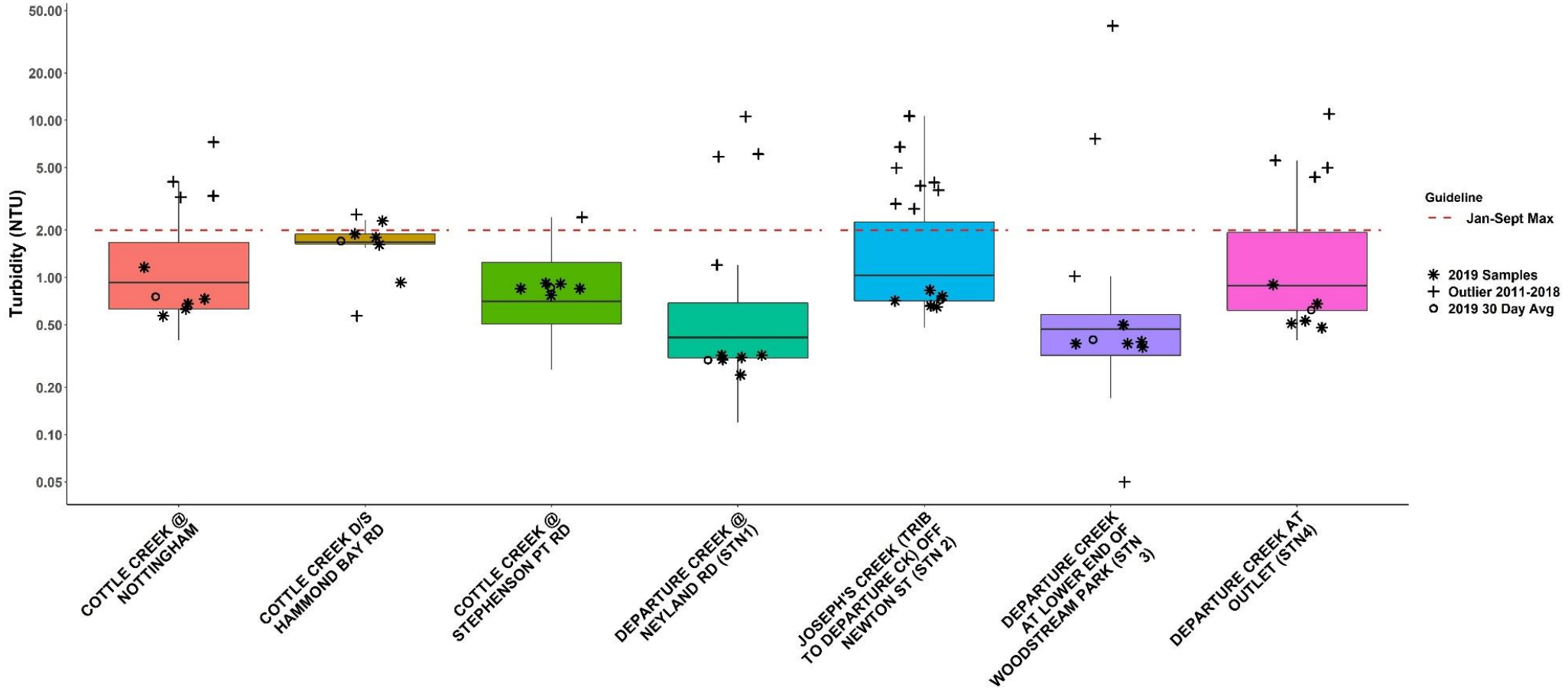
WR5-1 Fall Dissolved Oxygen



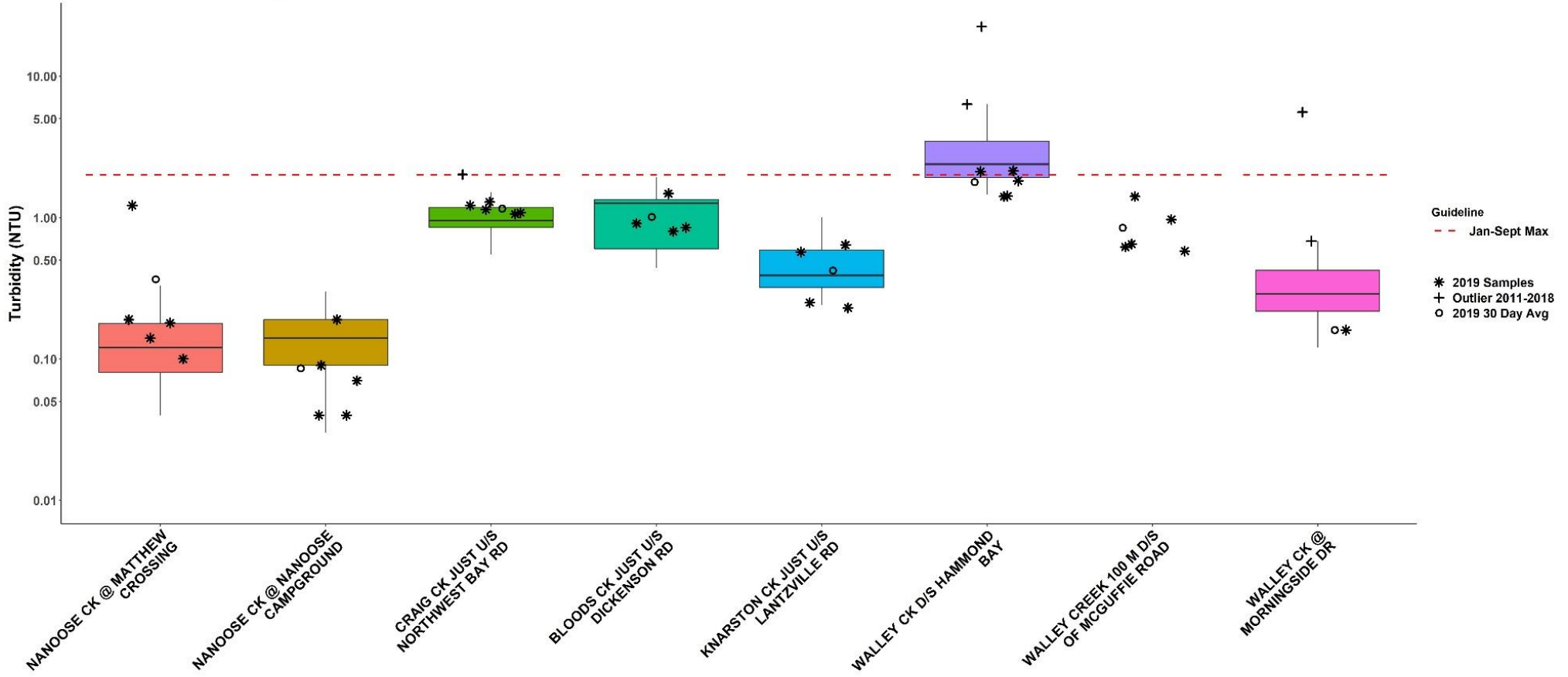
WR5-1 Fall Dissolved Oxygen



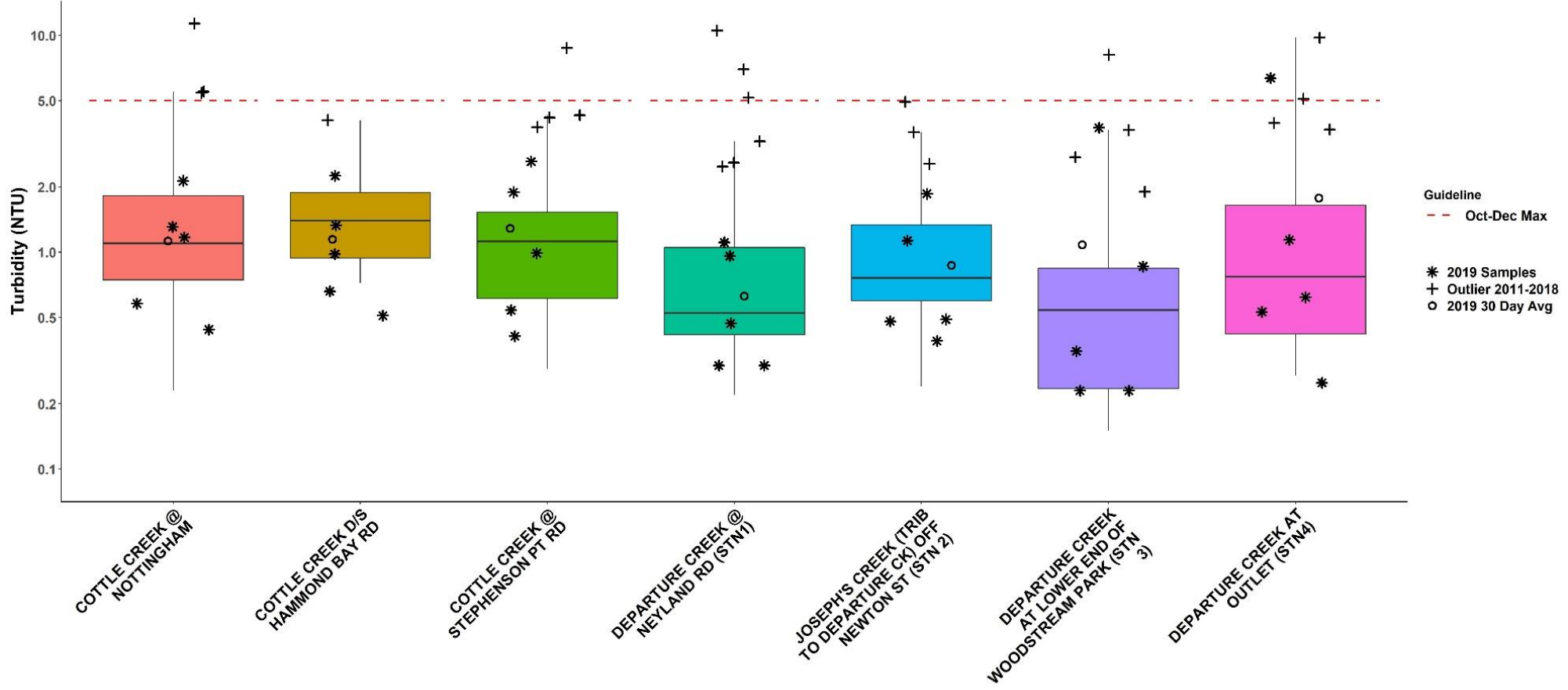
WR5-1 Summer Turbidity



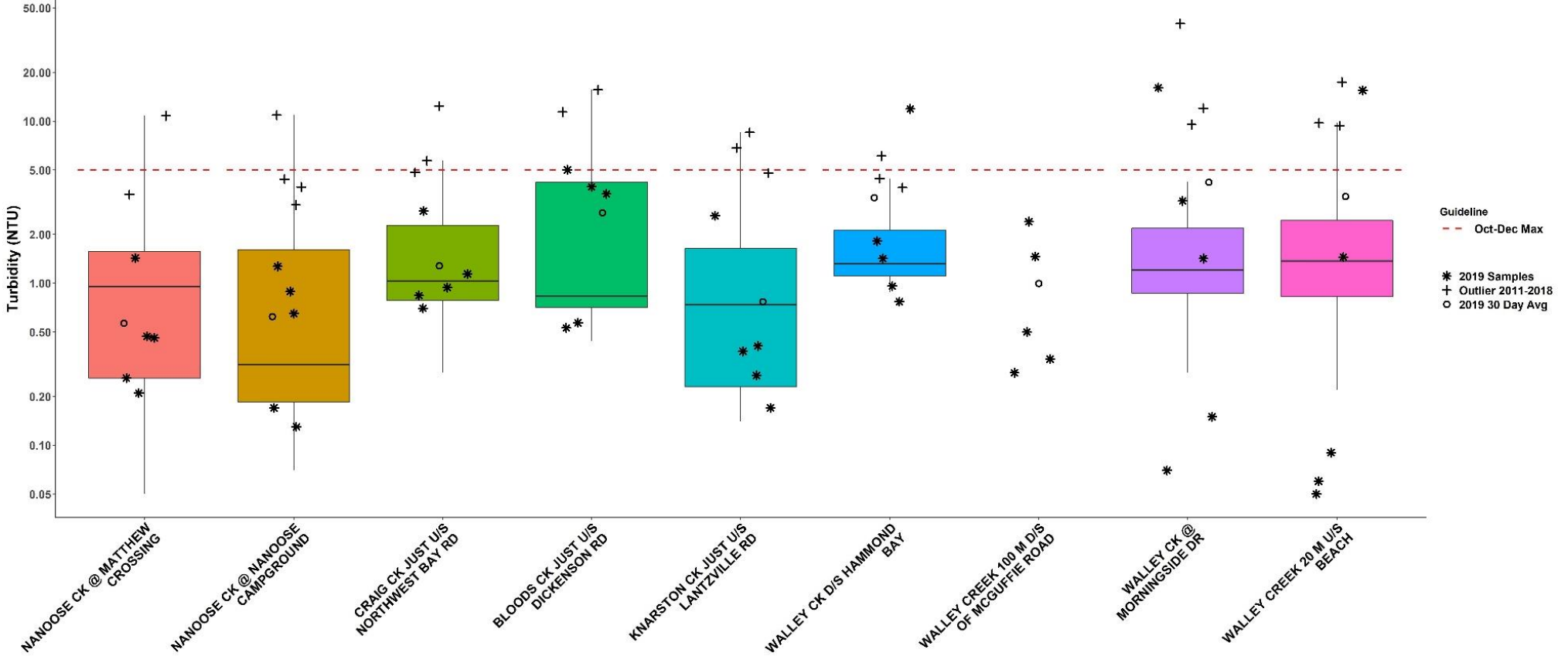
WR5-1 Summer Turbidity



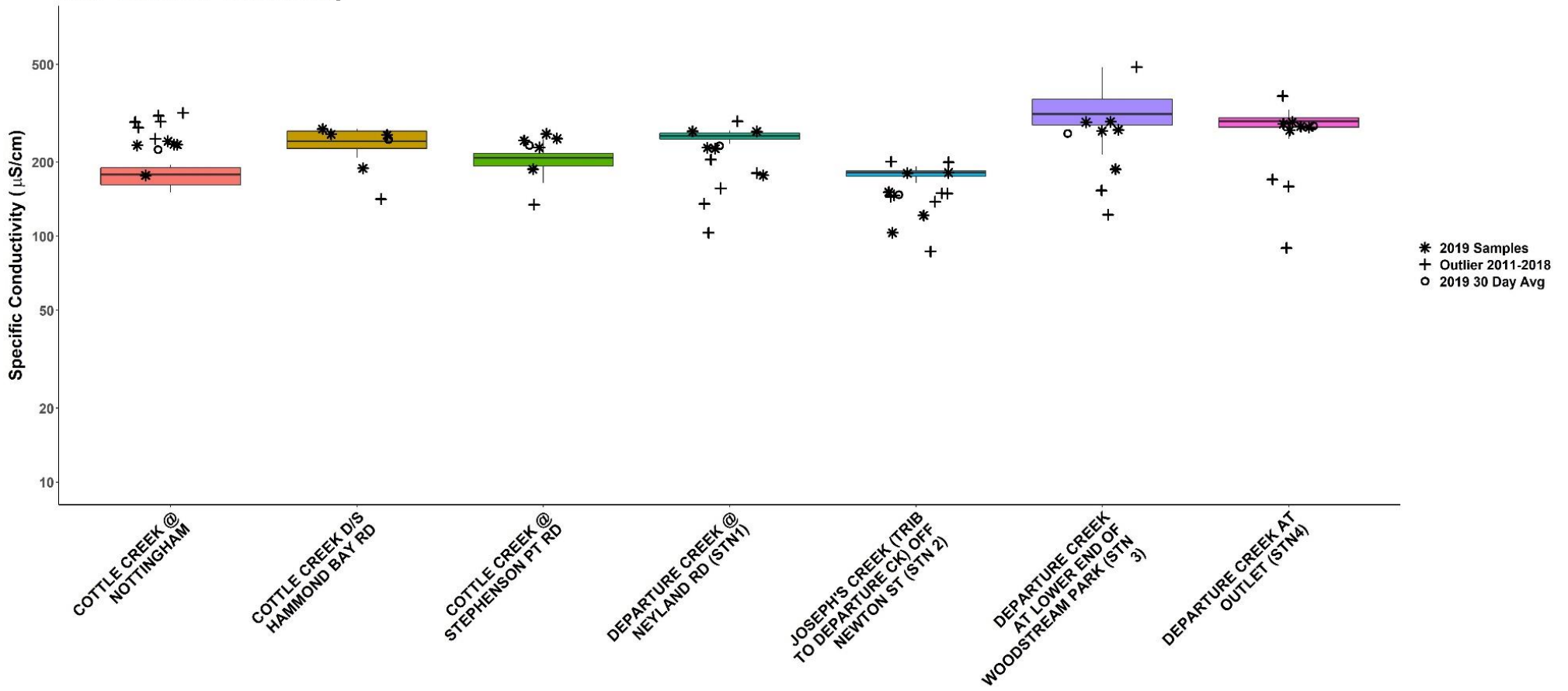
WR5-1 Fall Turbidity



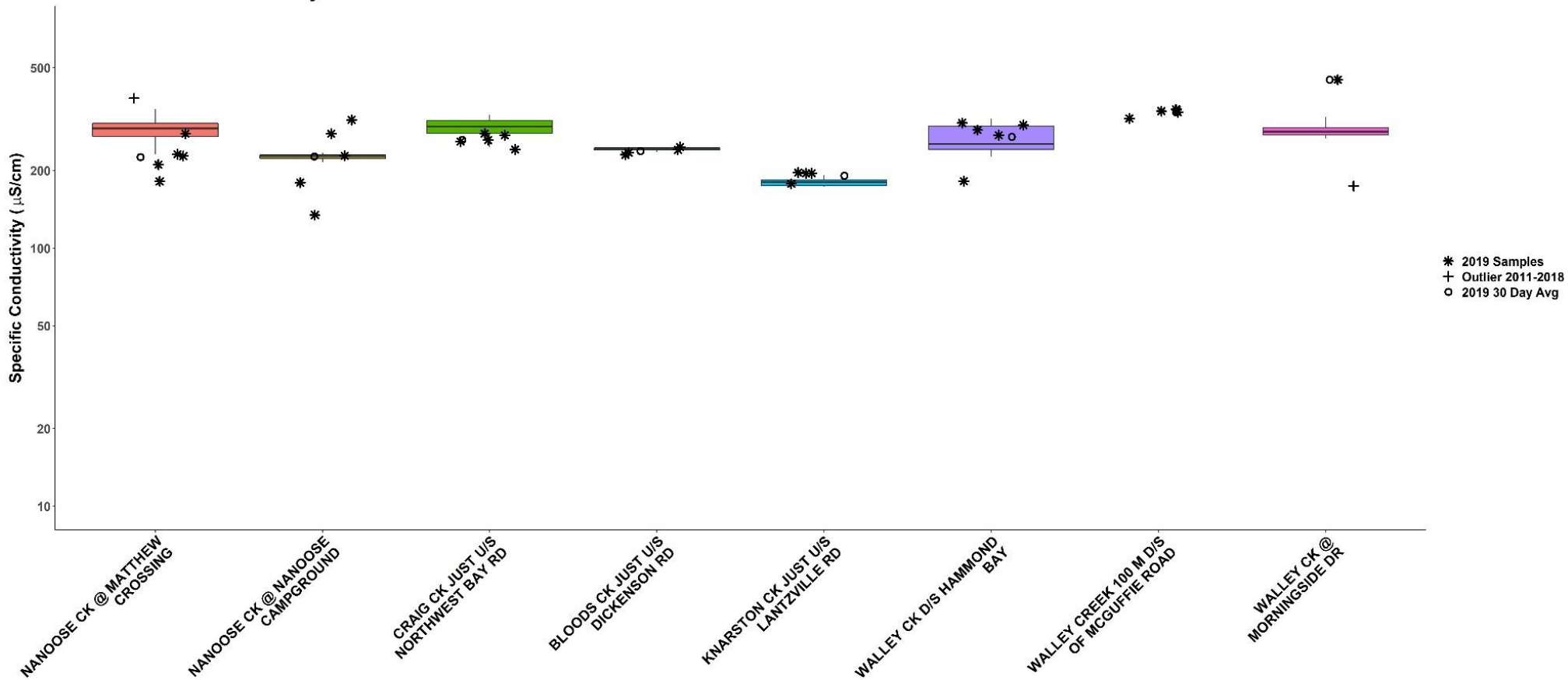
WR5-1 Fall Turbidity



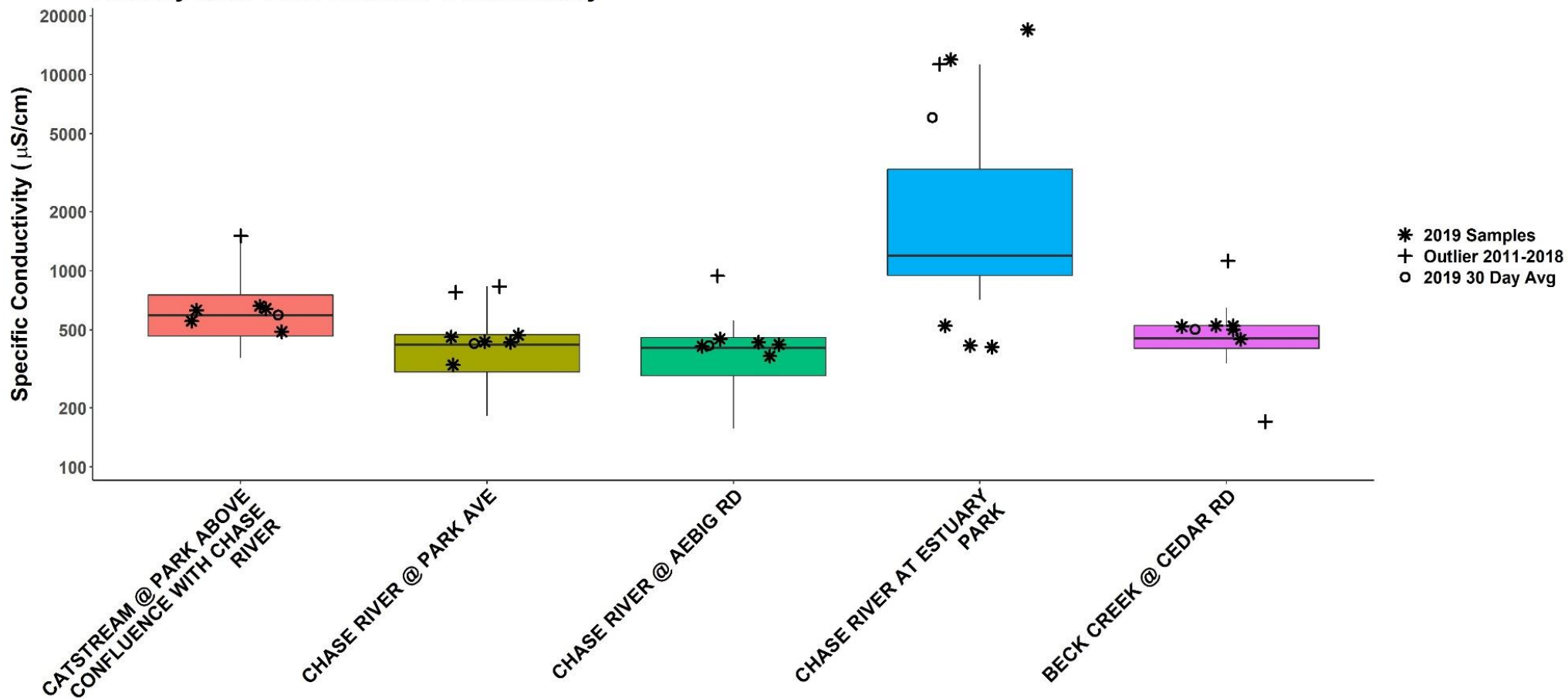
WR5-1 Summer Conductivity



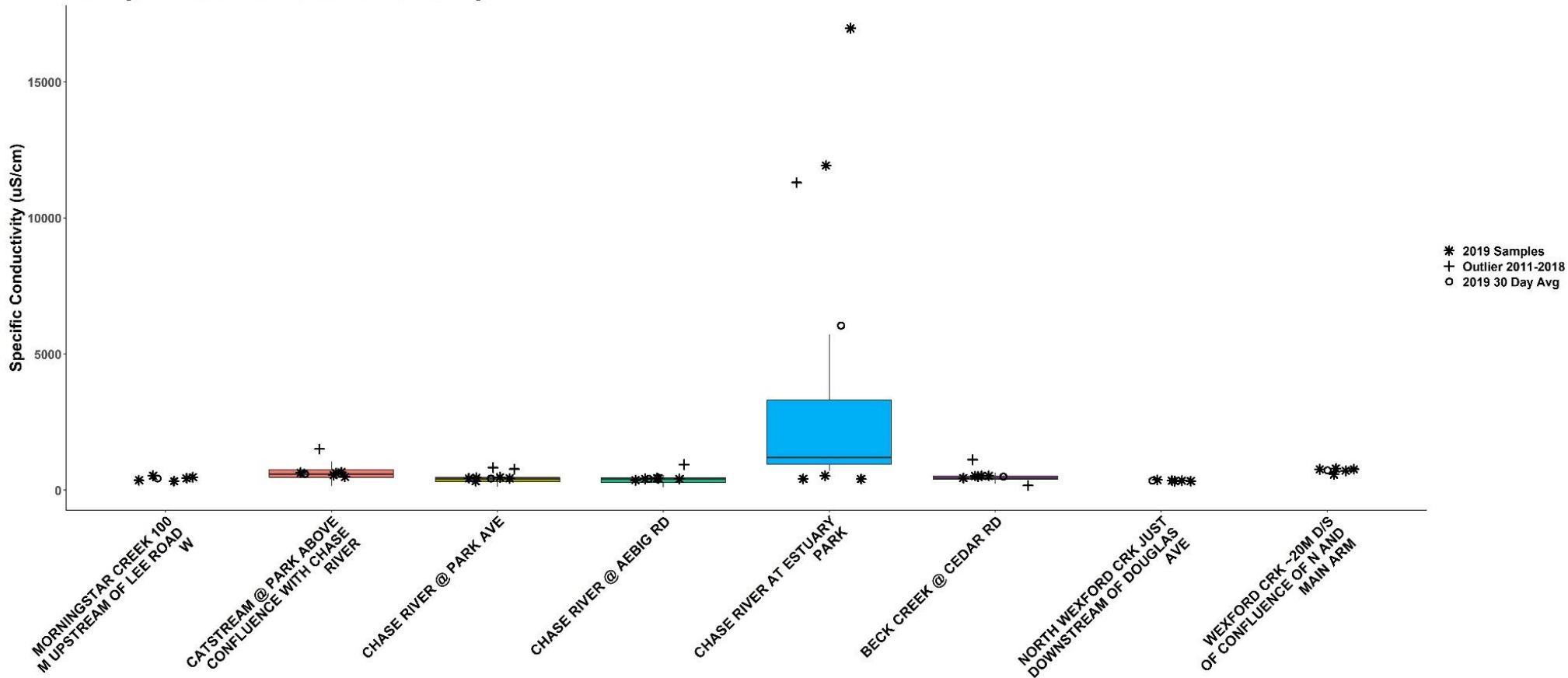
WR5-1 Summer Conductivity



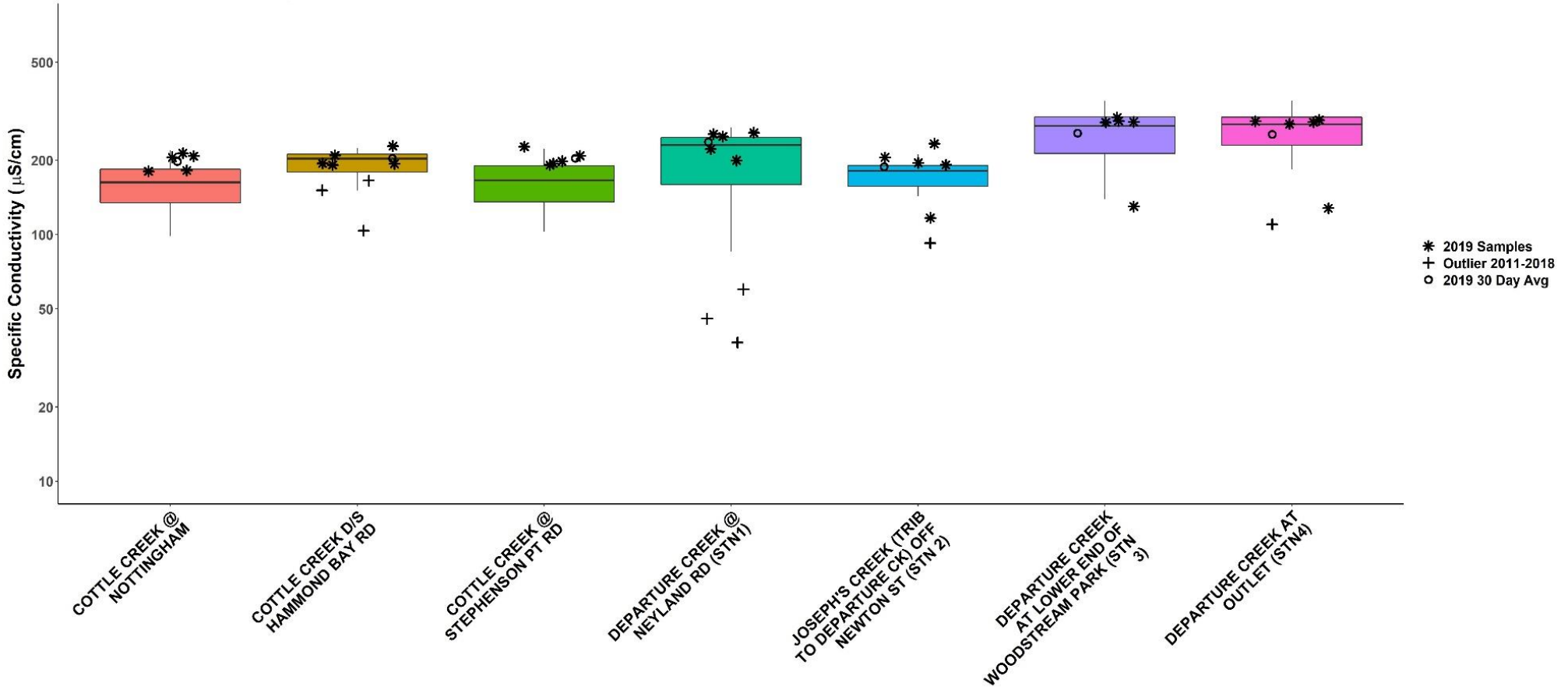
Estuary WR5 WR6 Summer Conductivity



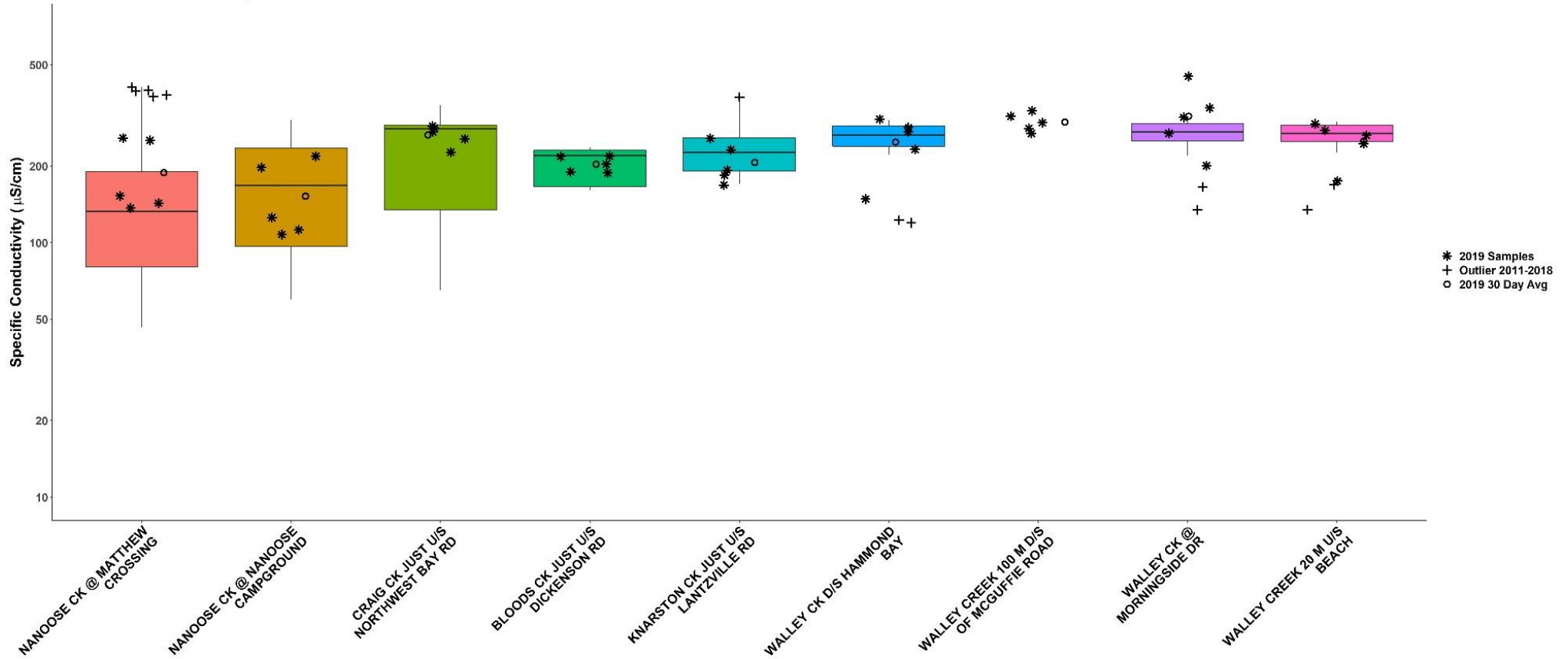
Estuary WR3 WR5 WR6 Summer Conductivity



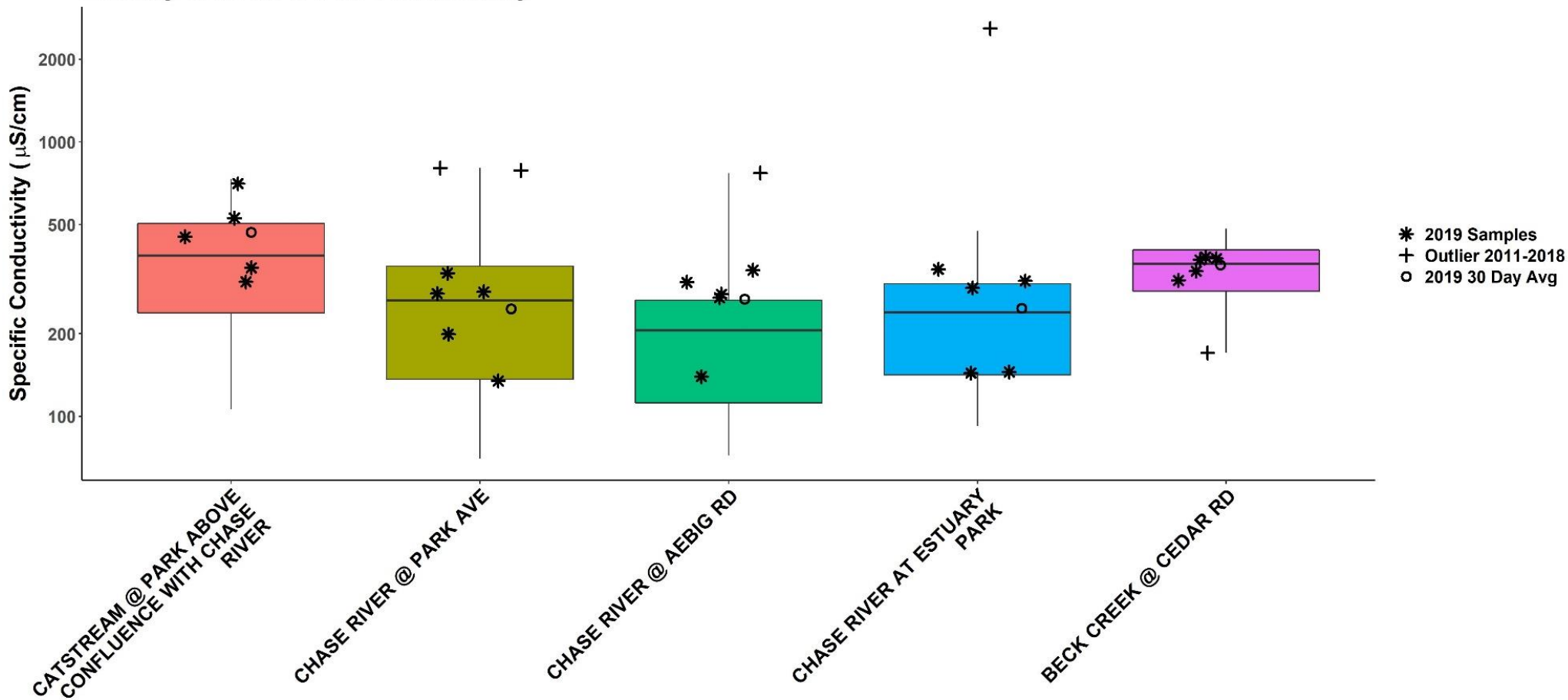
WR5-1 Fall Conductivity



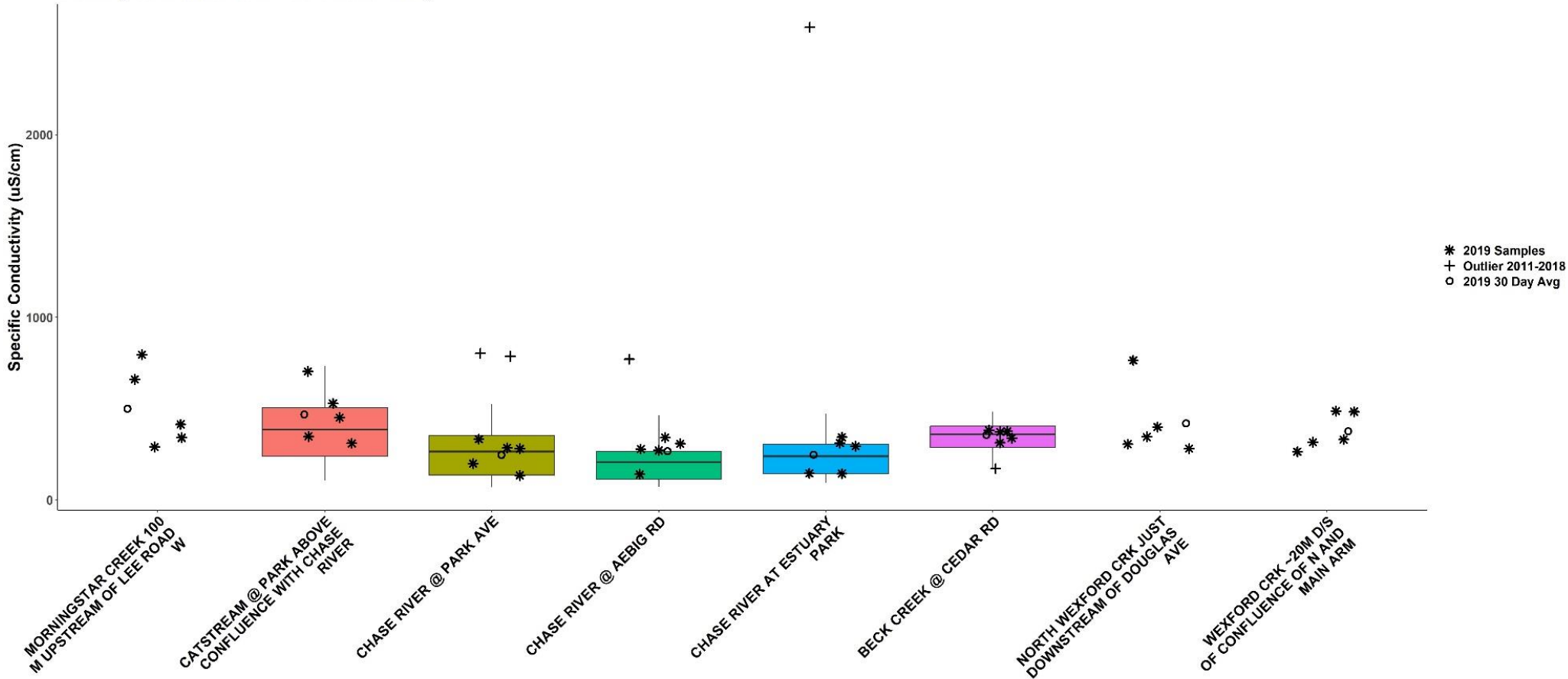
WR5-1 Fall Conductivity



Estuary WR5 WR6 Fall Conductivity



Estuary WR3 WR5 WR6 Fall Conductivity





Nanoose Streamkeepers & NALT Lantzville Group 2019 Monitoring Sites

Status

- Active
- Not Active

Watercourse (approximate location)

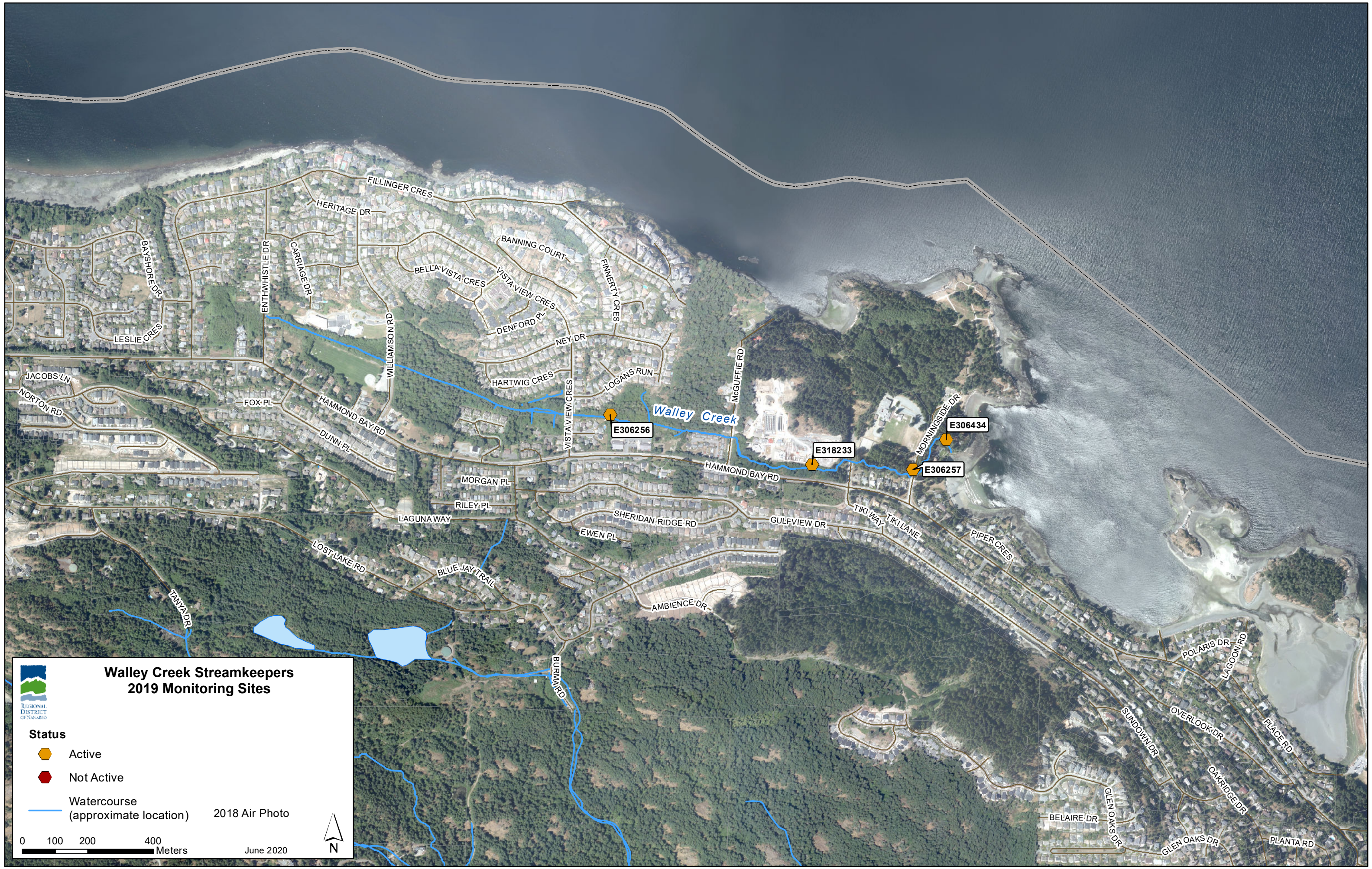
2018 Air Photo

- Community Park
- Regional Park
- Provincial Park

0 500 1,000 2,000 Meters

July 2019

N



**Walley Creek Streamkeepers
2019 Monitoring Sites**

REGIONAL DISTRICT OF NAN-AHO

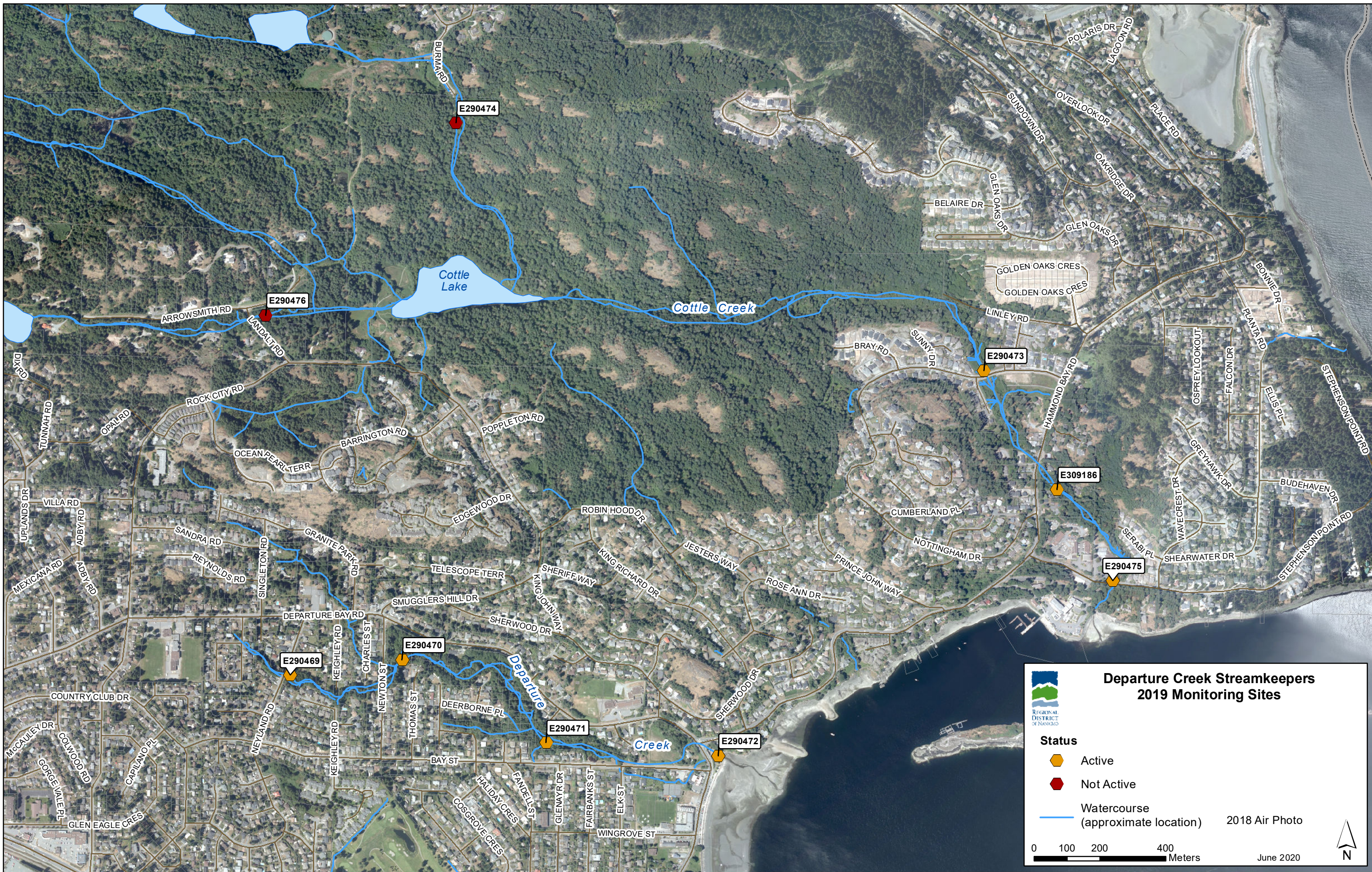
Status

- Active
- Not Active

Watercourse
(approximate location) 2018 Air Photo

0 100 200 400
Meters

June 2020



**Departure Creek Streamkeepers
2019 Monitoring Sites**

REGIONAL DISTRICT OF NANAIKO

Status

- ⬡ Active
- ⬡ Not Active

— Watercourse (approximate location)

2018 Air Photo

0 100 200 400 Meters

June 2020

N