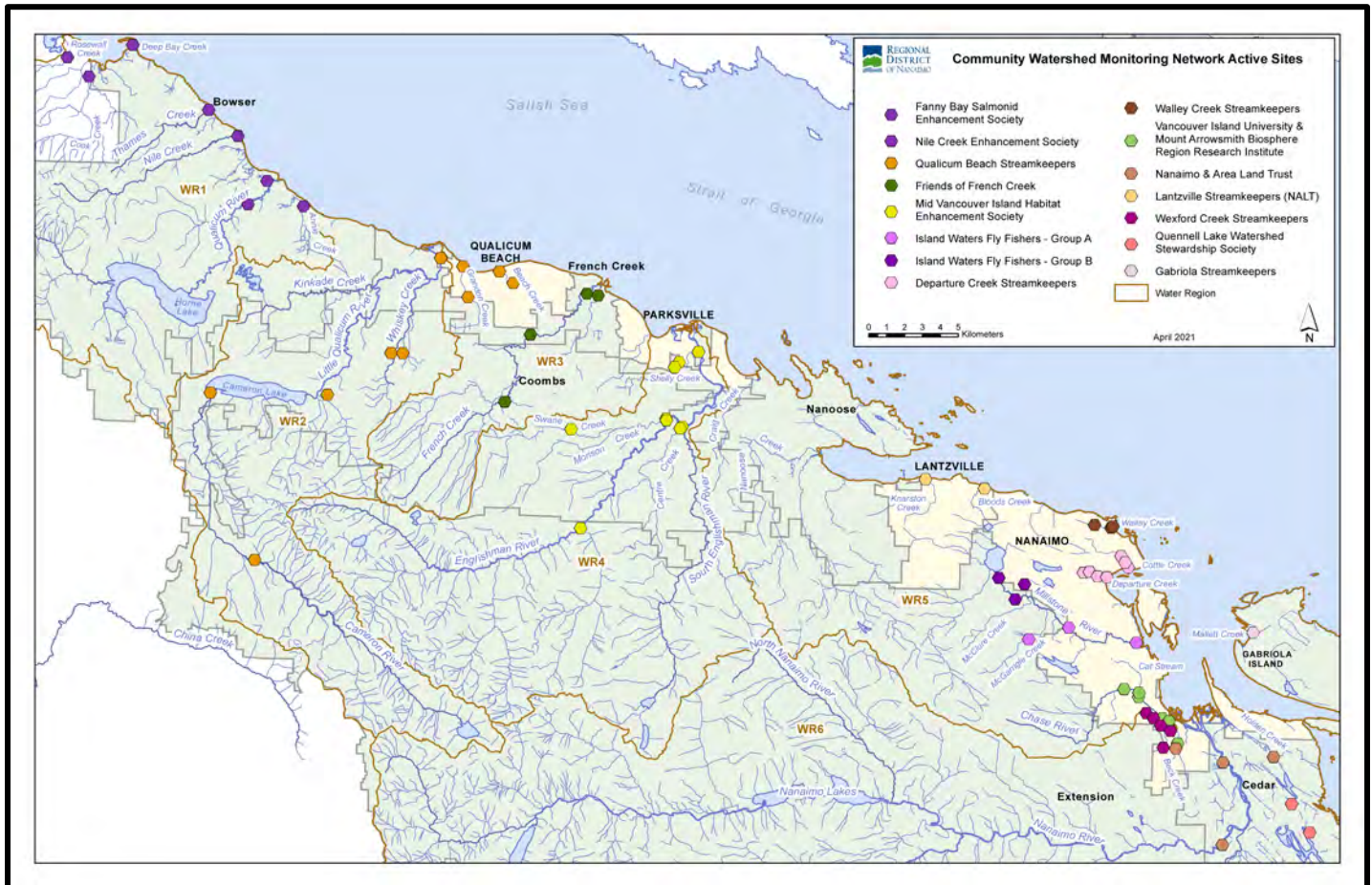


Community Watershed Monitoring Network 2021 Results by Water Region



Included in Water Region (WR) 5-1 package:

1. CWMN WR5-1 sample sites
2. How to interpret a box plot
3. Box Plot Comparison – 2021 data to previous years: *displayed by parameter (Temperature, Dissolved Oxygen, Turbidity, Conductivity) & sample period (summer, fall)*
4. LSk CWMN map of sample sites
5. DCS CWMN map of sample sites
6. WCS CWMN map of sample sites



Water Region 5-1
sampled by:
Lantzville Streamkeepers (LSk)
&
Departure Creek Streamkeepers (DCS)
&
Walley Creek Streamkeepers (WCS)



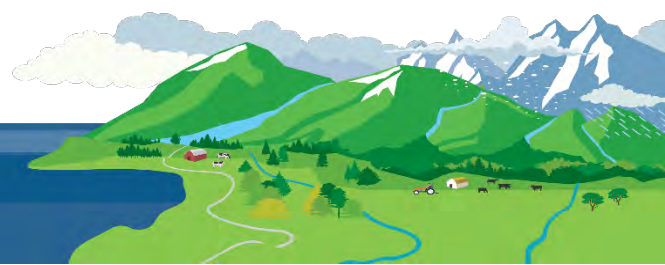
WR5-1 CWMN Sample Sites:

The table below shows the sites monitored by each of the streamkeeper organizations, as well as the number of years and which years a site was sampled. The number of years is important to keep in mind when interpreting the box plots as the plot for each site may contain a slightly different temporal range.

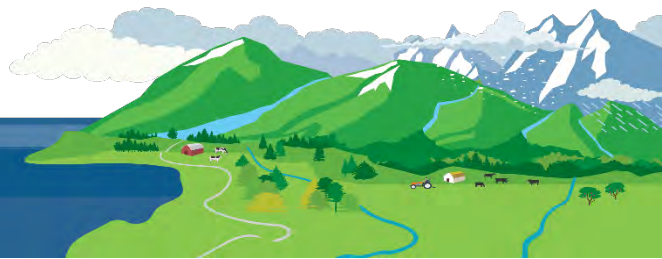
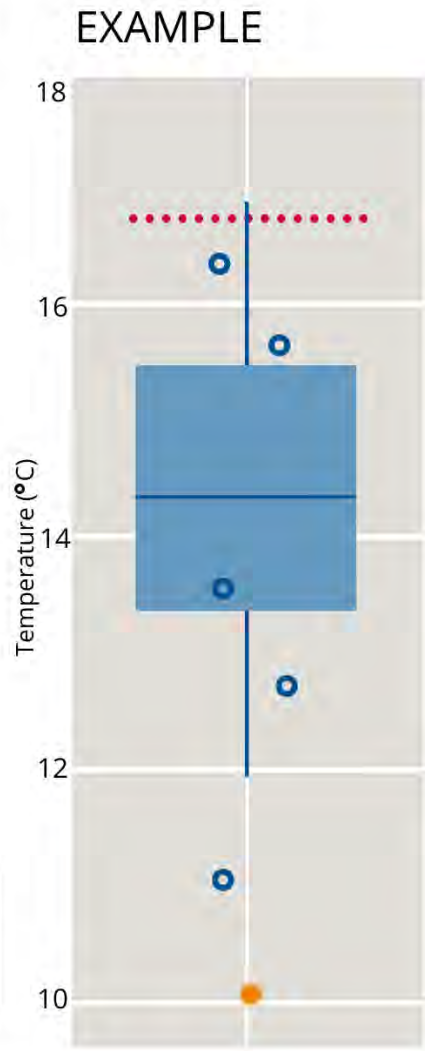
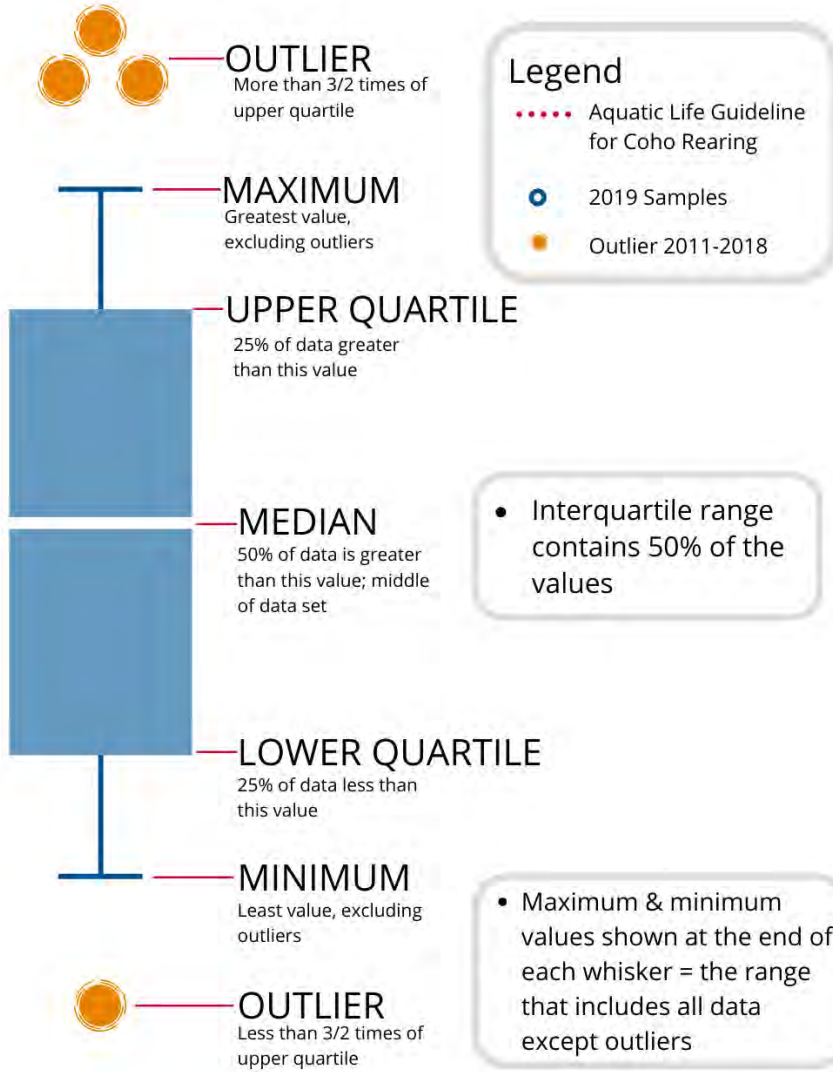
Group	EMS ID	Geographic Description	Years Sampled	Years Monitored
LSk	E294010	Bloods Creek just u/s Dickenson Rd	4.5	2017 – present*
LSk	E294013	Knarston Ck just u/s Lantzville Rd	4.5	2017 – present*
DCS	E290469	Departure Ck @ Neyland Rd (Stn1)	10	2012 – present
DCS	E290470	Josephs Ck (Dept Ck trib) off Newton (Stn 2)	10	2012 – present
DCS	E290471	Departure Ck in Woodstream Park (Stn 3)	10	2012 – present
DCS	E290472	Departure Ck @ outlet (Stn 4)	10	2012 – present
DCS	E290473	Cottle Creek @ Nottingham	10	2012 – present
DCS	E309186	Cottle Creek d/s of Hammond Bay Road	5	2017 – present
DCS	E290475	Cottle Creek @ Stephenson Pt Rd	10	2012 – present
WCS	E306256	Walley Ck d/s Hammond Bay	6	2016 – present
WCS	E306257	Walley Ck @ Morningside Dr	6	2016 – present
WCS	E306434	Walley Creek 20m u/s beach	6	2016 – present
WCS	E318233	Walley Ck 100 m d/s McGuffie Rd	2	2019 – present^

**Sampled in 2017 fall period only.*

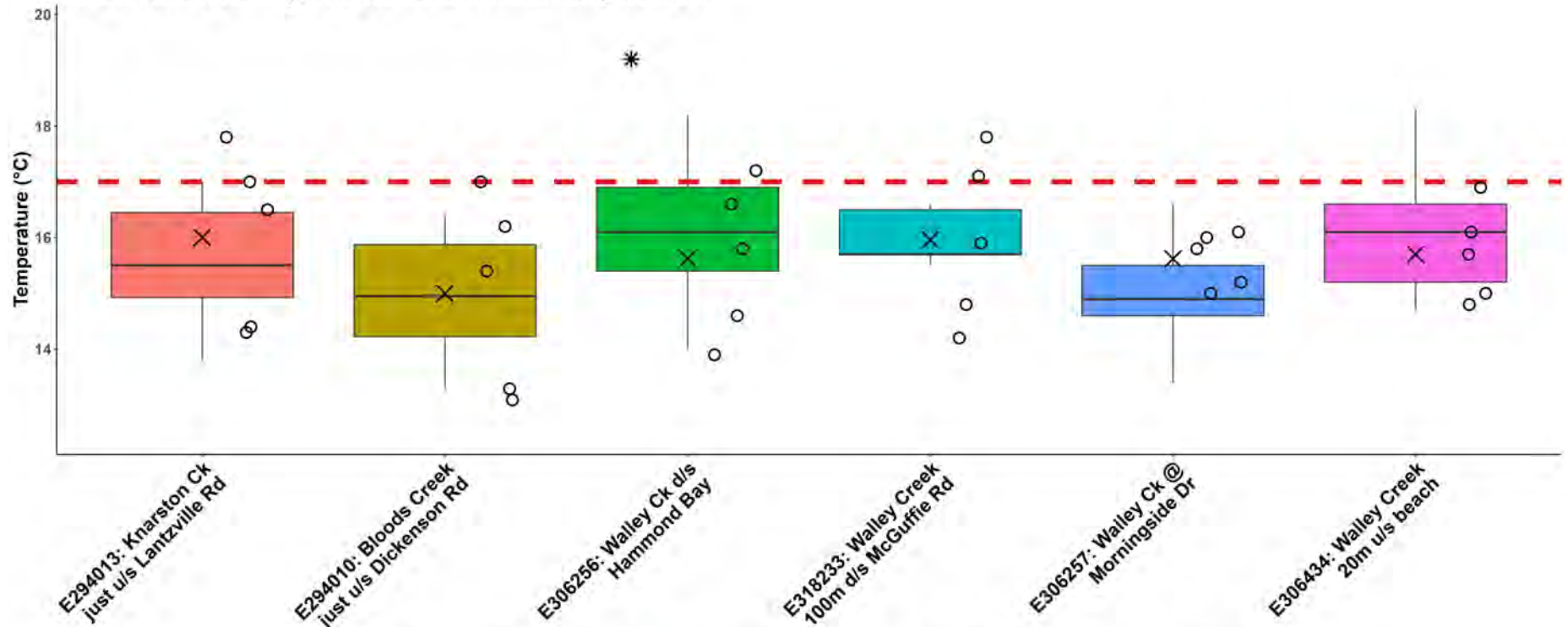
^The number of years sampled do not include 2020 due to construction work at the GNPCC.



How to Interpret a Box Plot:



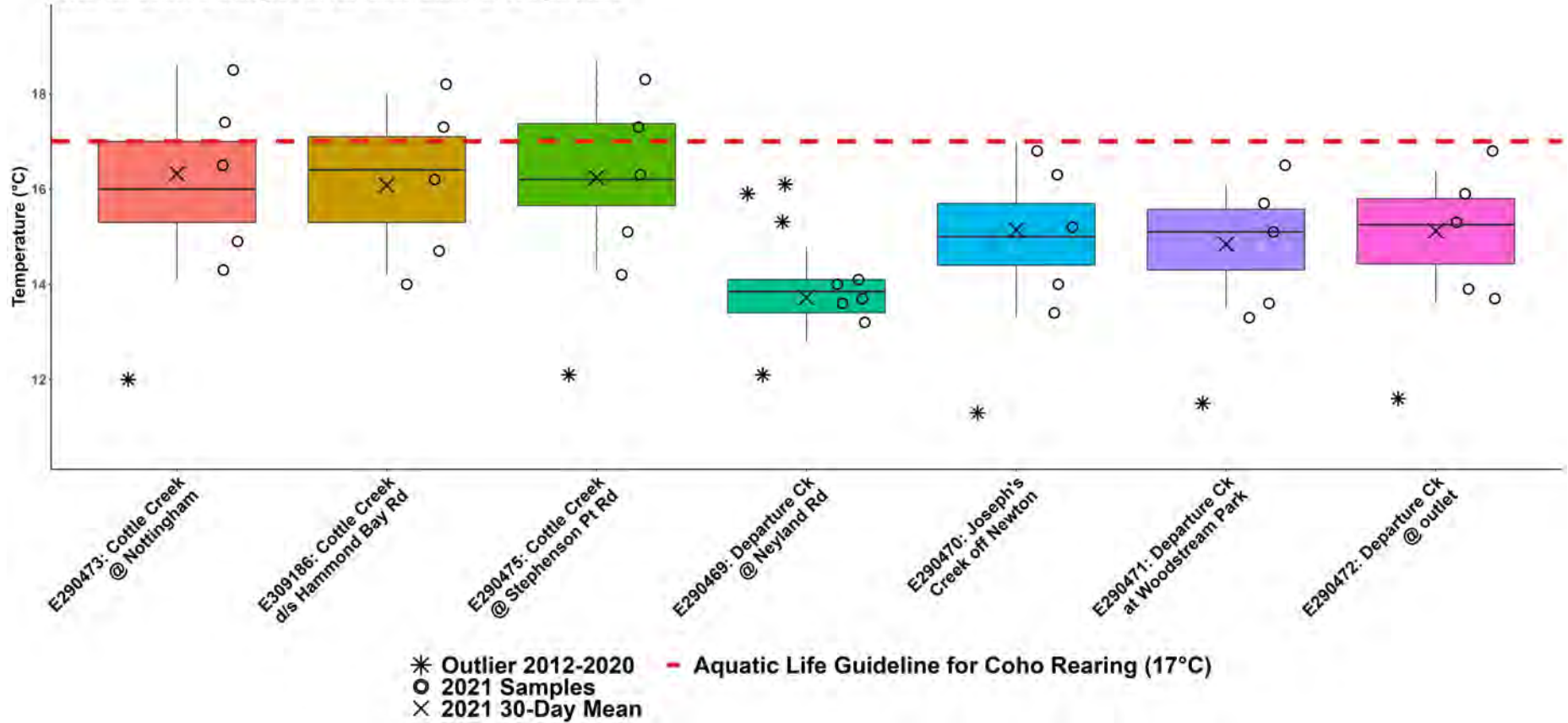
WR5-1a: South Wellington to Nanoose Summer Temperature



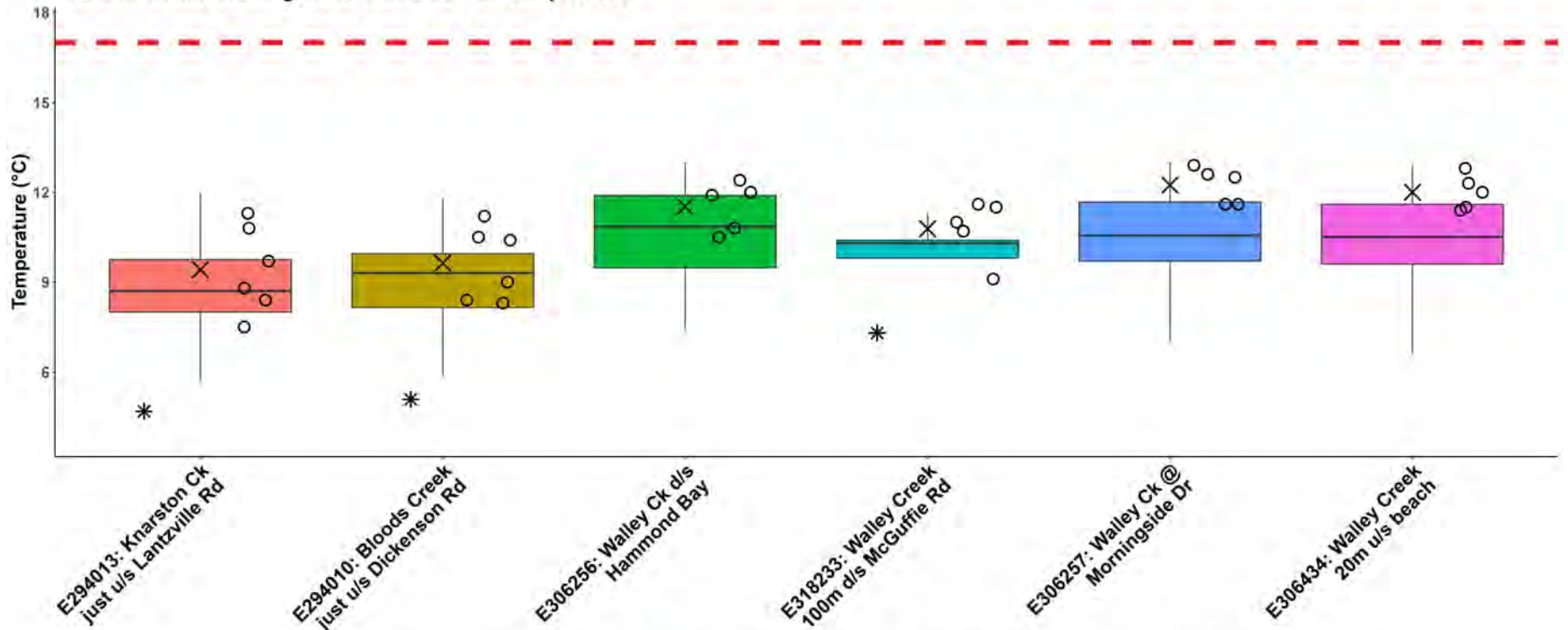
* Outlier 2013-2020 - Aquatic Life Guideline for Coho Rearing (17°C)
 ○ 2021 Samples
 × 2021 30-Day Mean



WR5-1b: South Wellington to Nanoose Summer Temperature



WR5-1a: South Wellington to Nanoose Fall Temperature



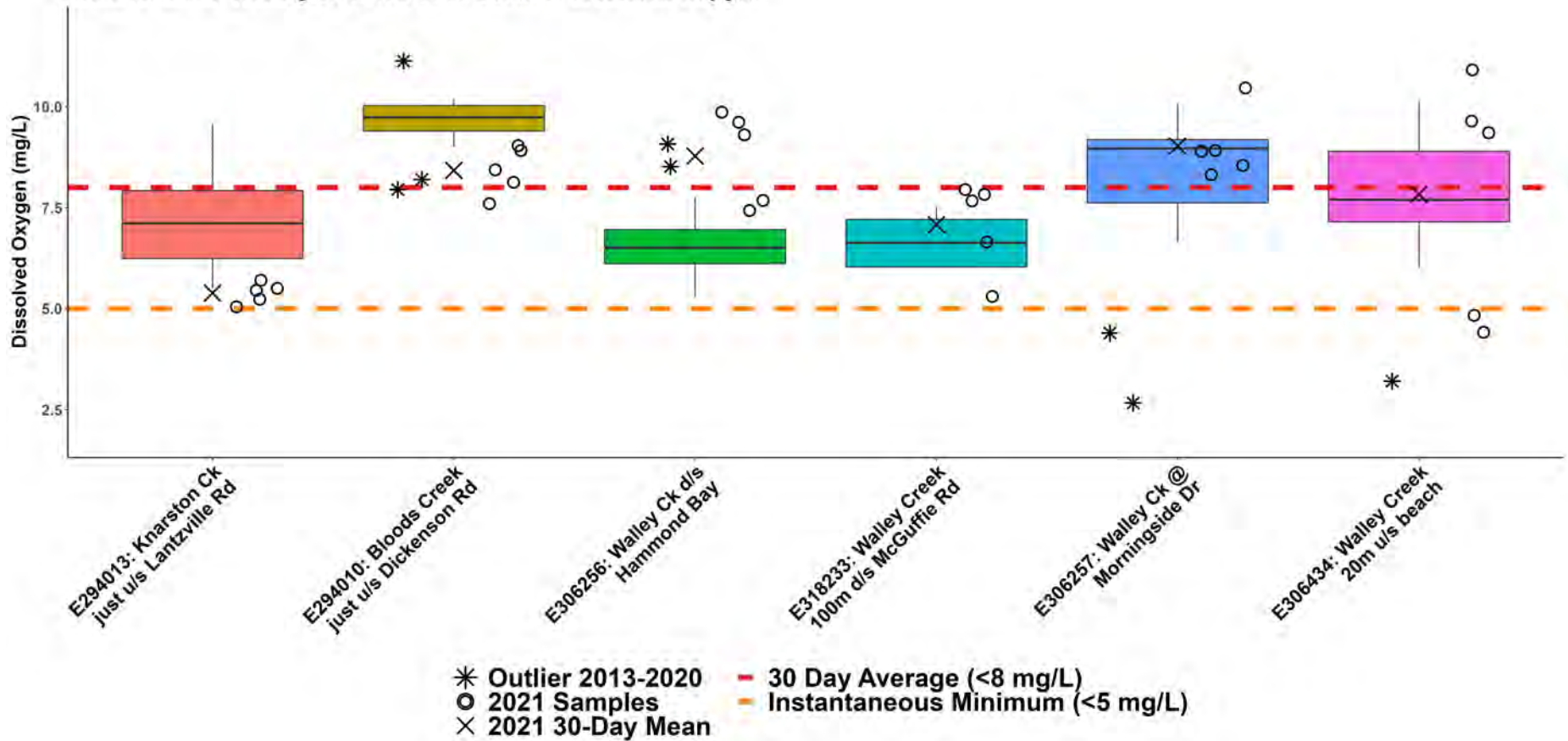
* Outlier 2013-2020 - Aquatic Life Guideline for Coho Rearing (17°C)
 ○ 2021 Samples
 × 2021 30-Day Mean



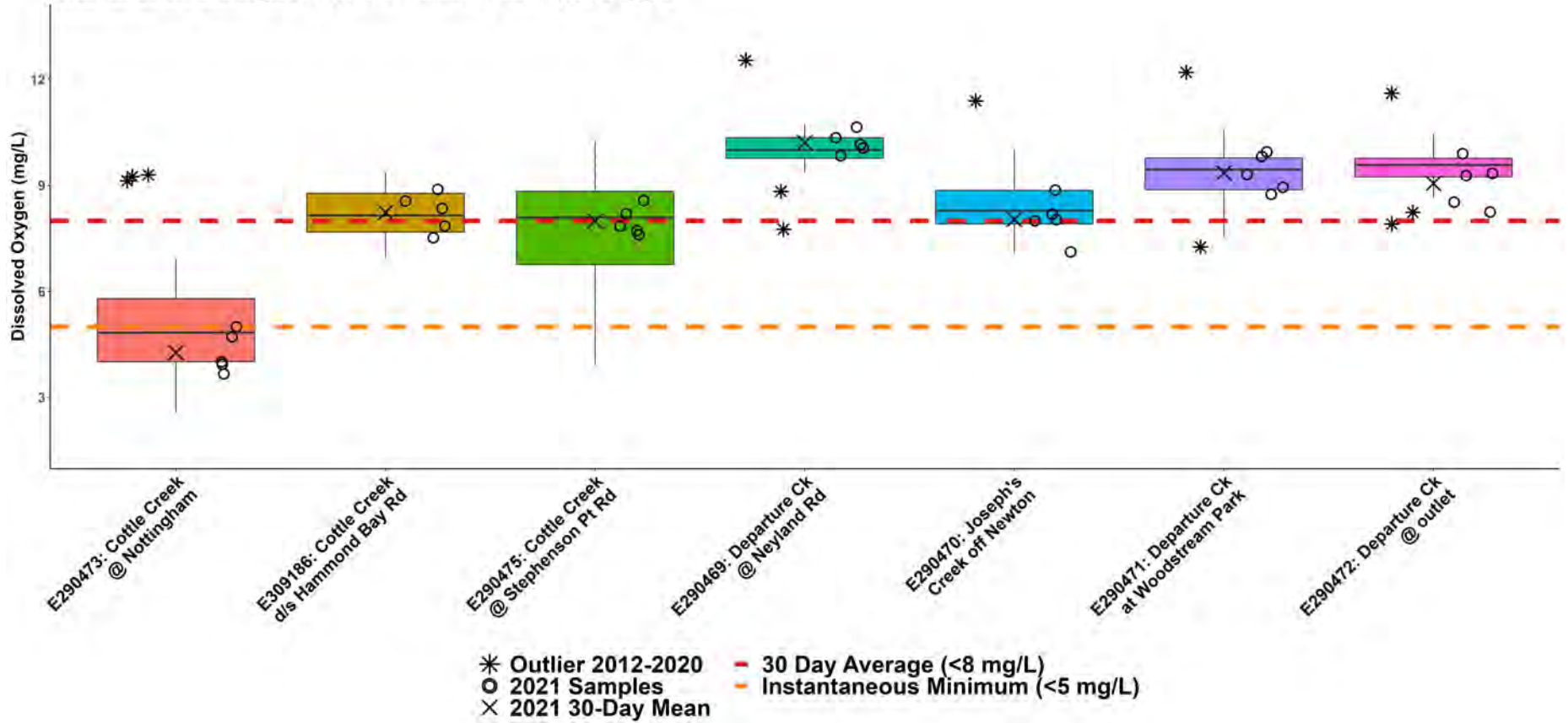
WR5-1b: South Wellington to Nanoose Fall Temperature



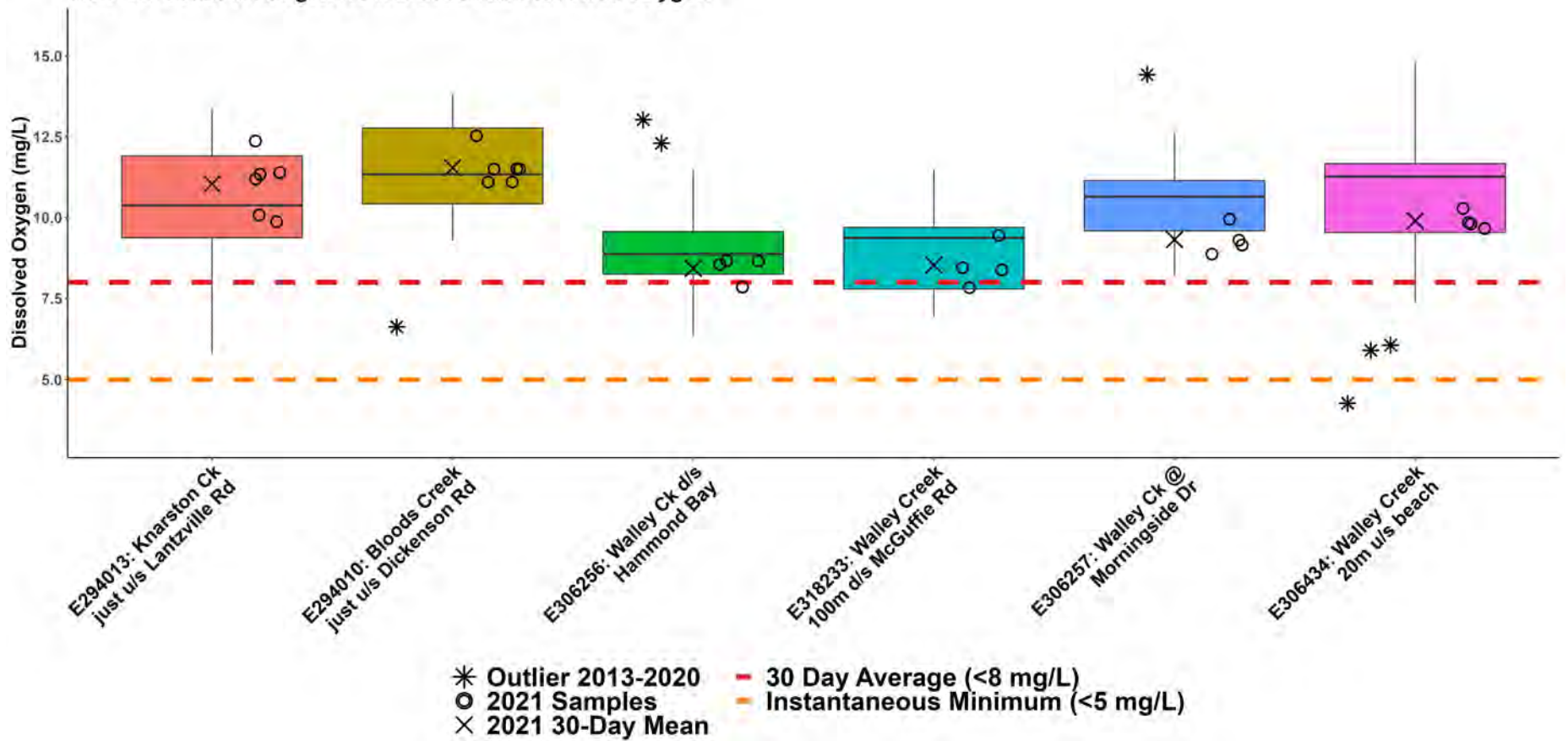
WR5-1a: South Wellington to Nanoose Summer Dissolved Oxygen



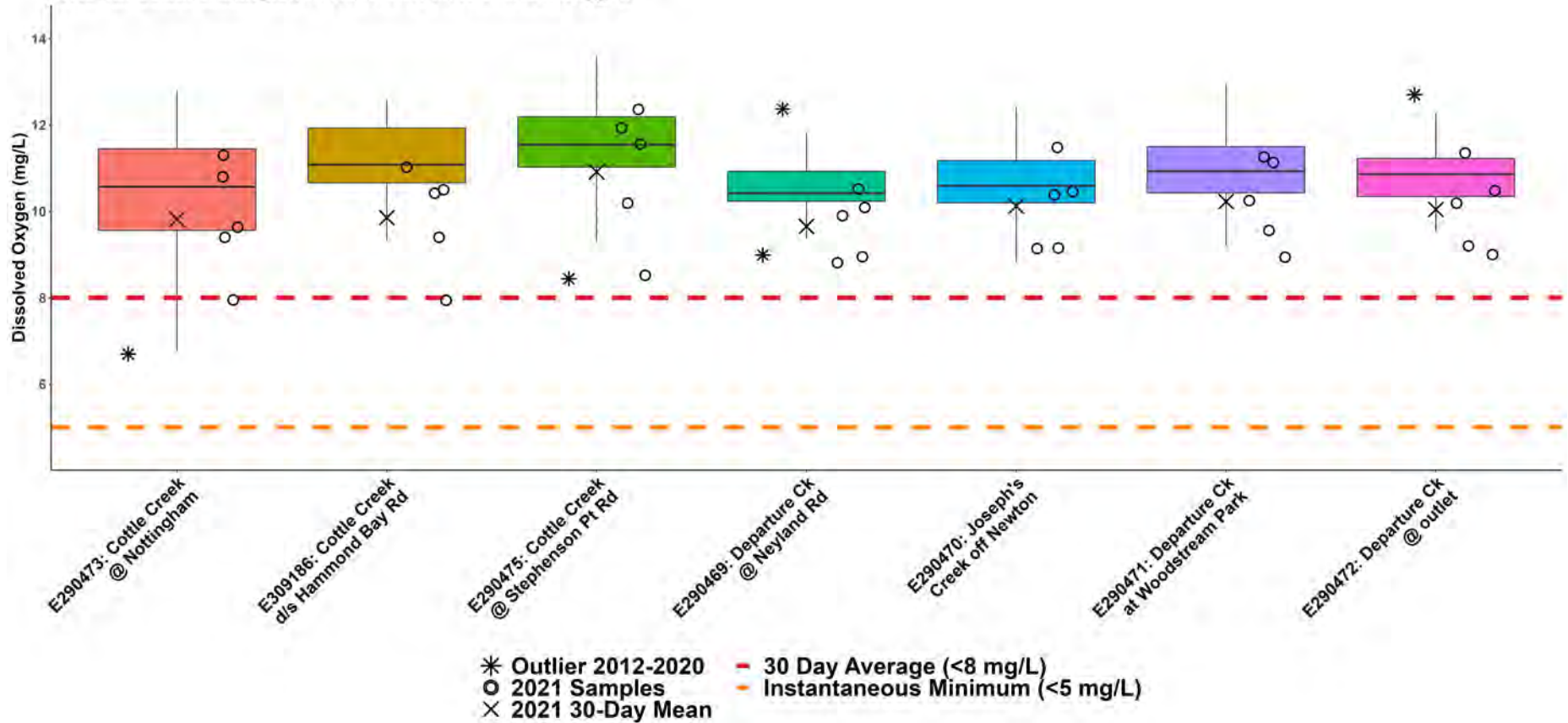
WR5-1b: South Wellington to Nanoose Summer Dissolved Oxygen



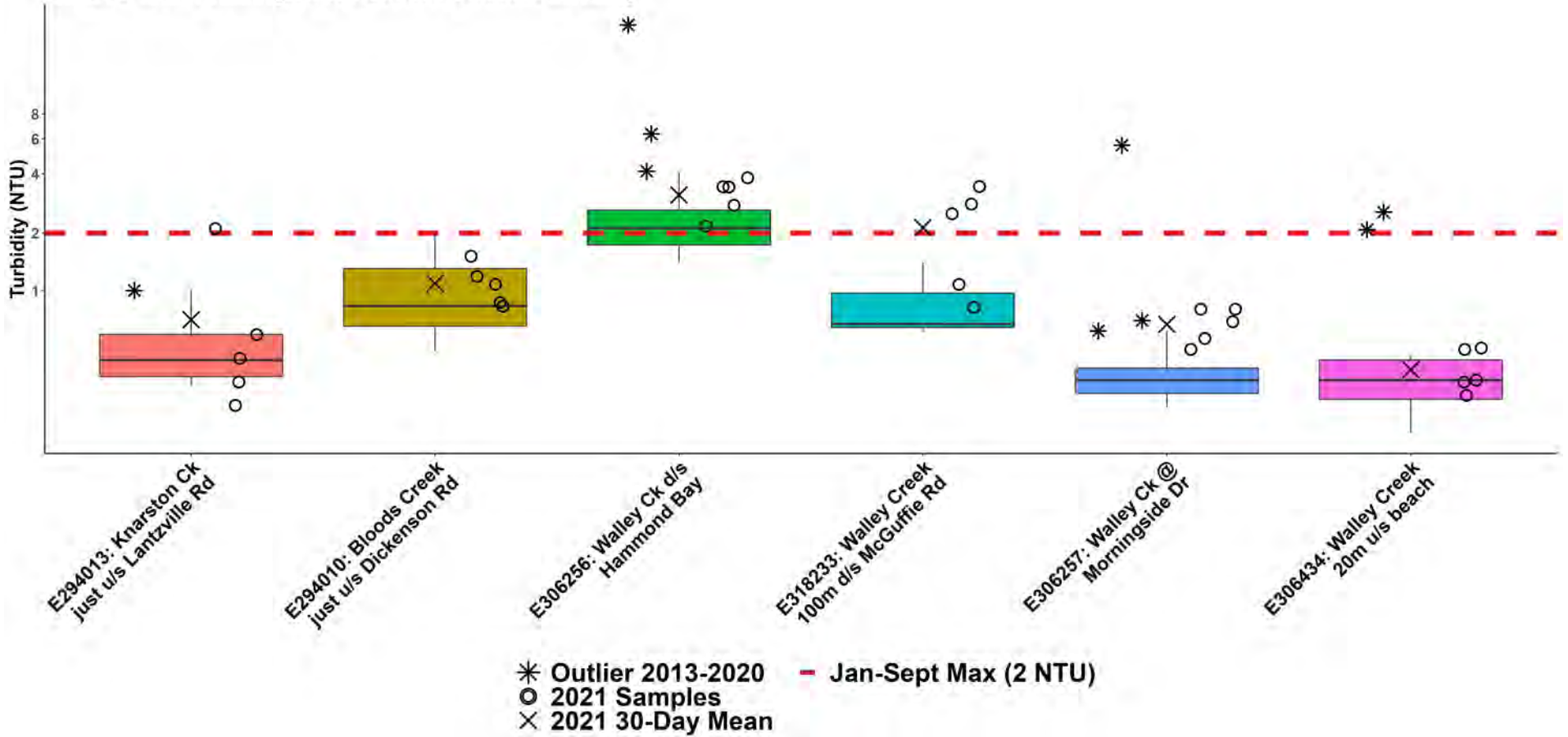
WR5-1a: South Wellington to Nanoose Fall Dissolved Oxygen



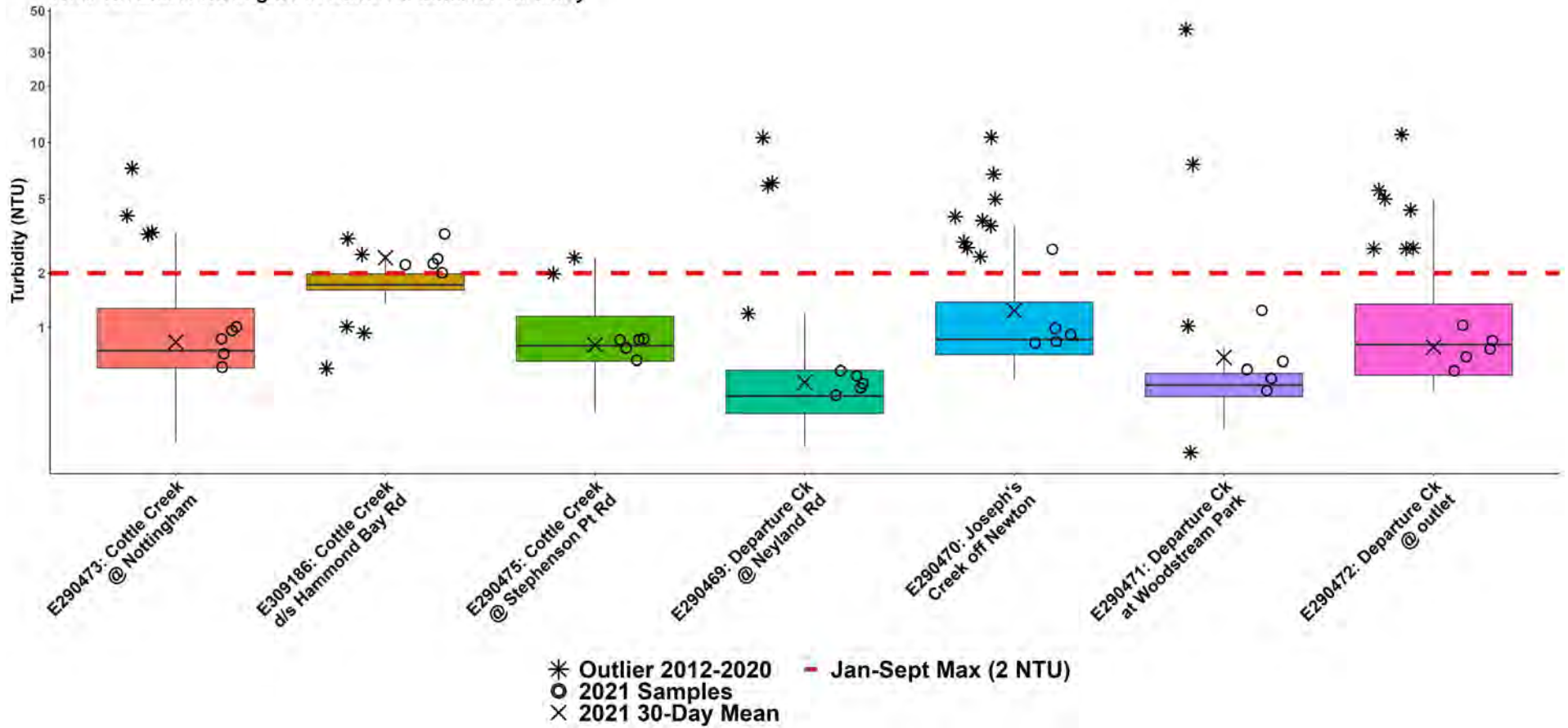
WR5-1b: South Wellington to Nanoose Fall Dissolved Oxygen



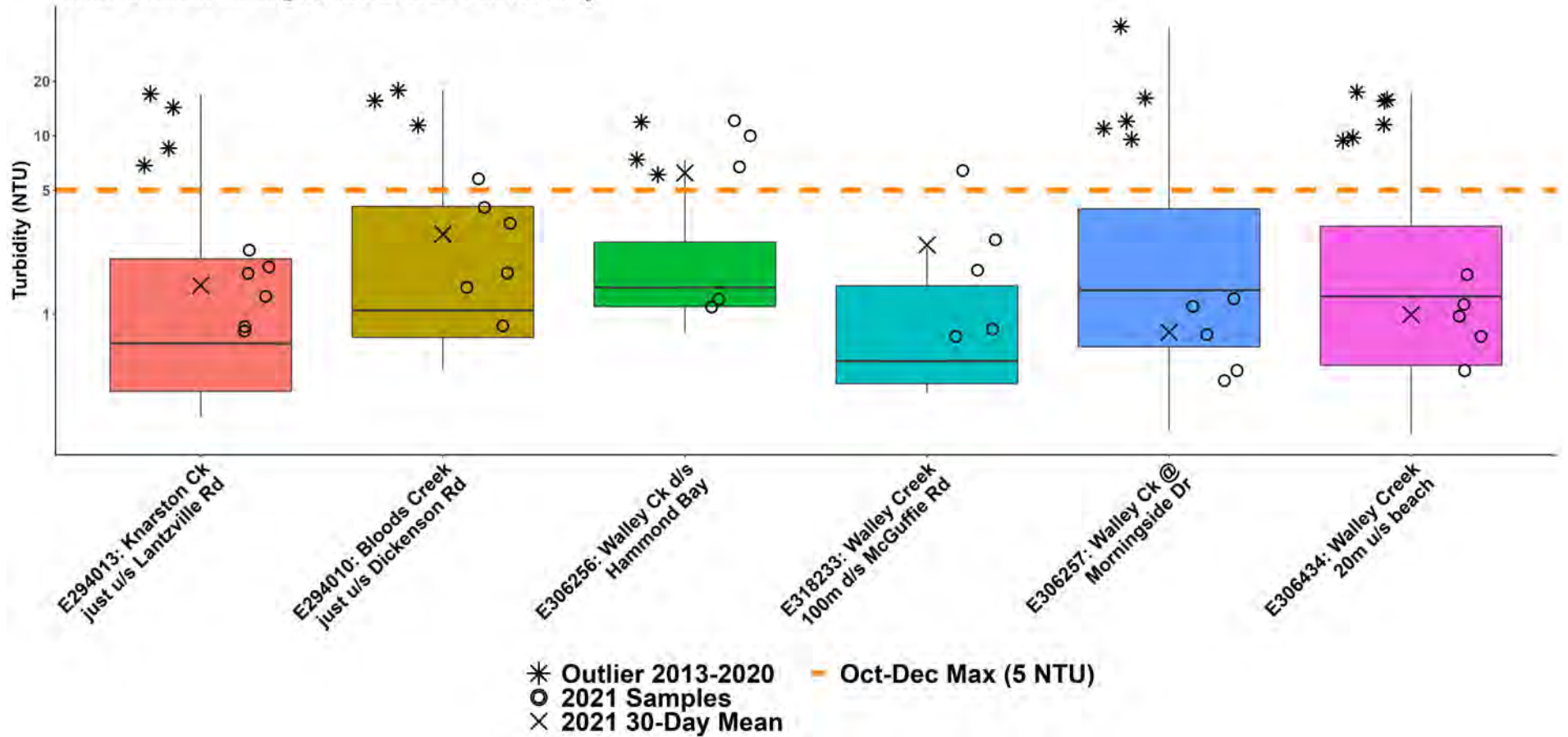
WR5-1a: South Wellington to Nanoose Summer Turbidity

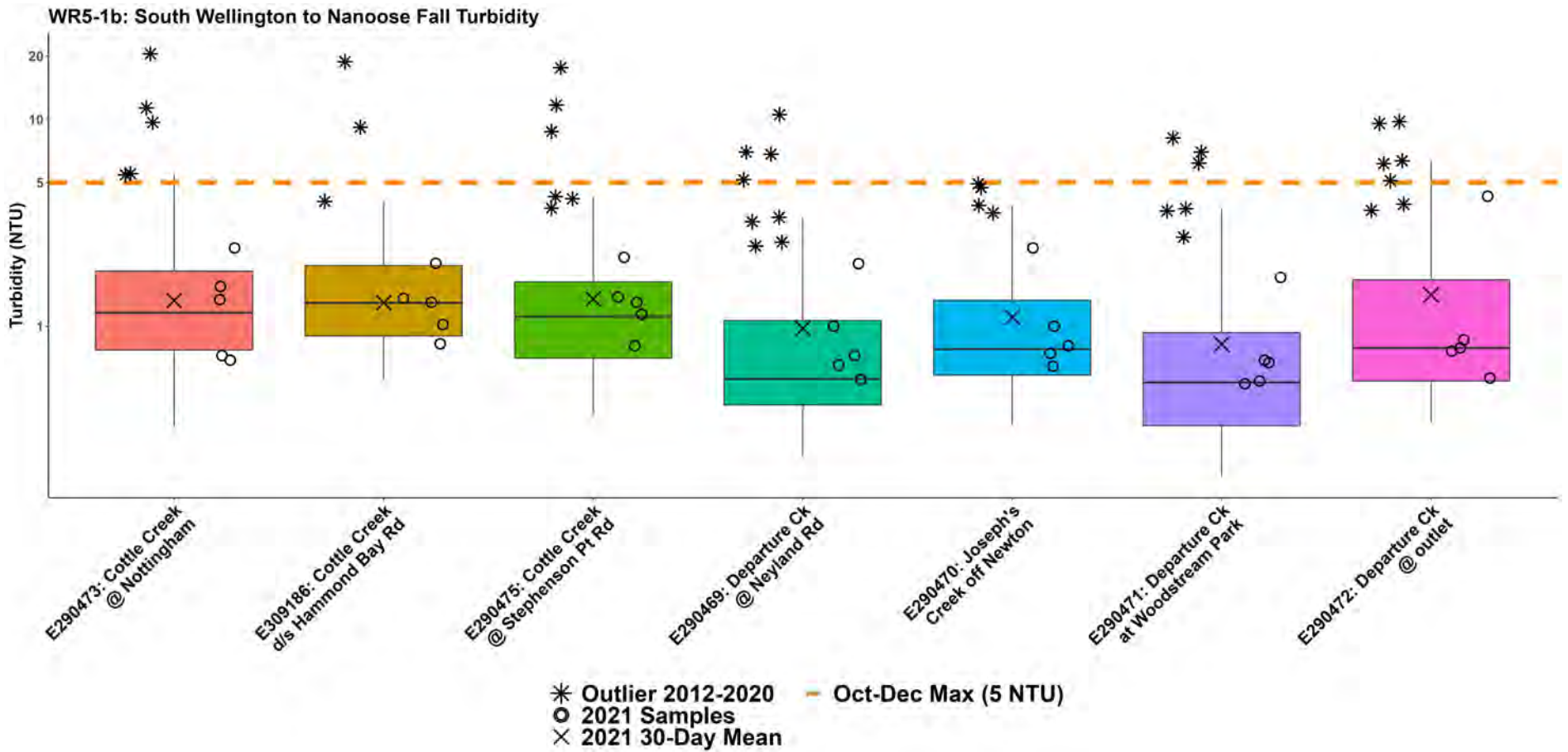


WR5-1b: South Wellington to Nanoose Summer Turbidity

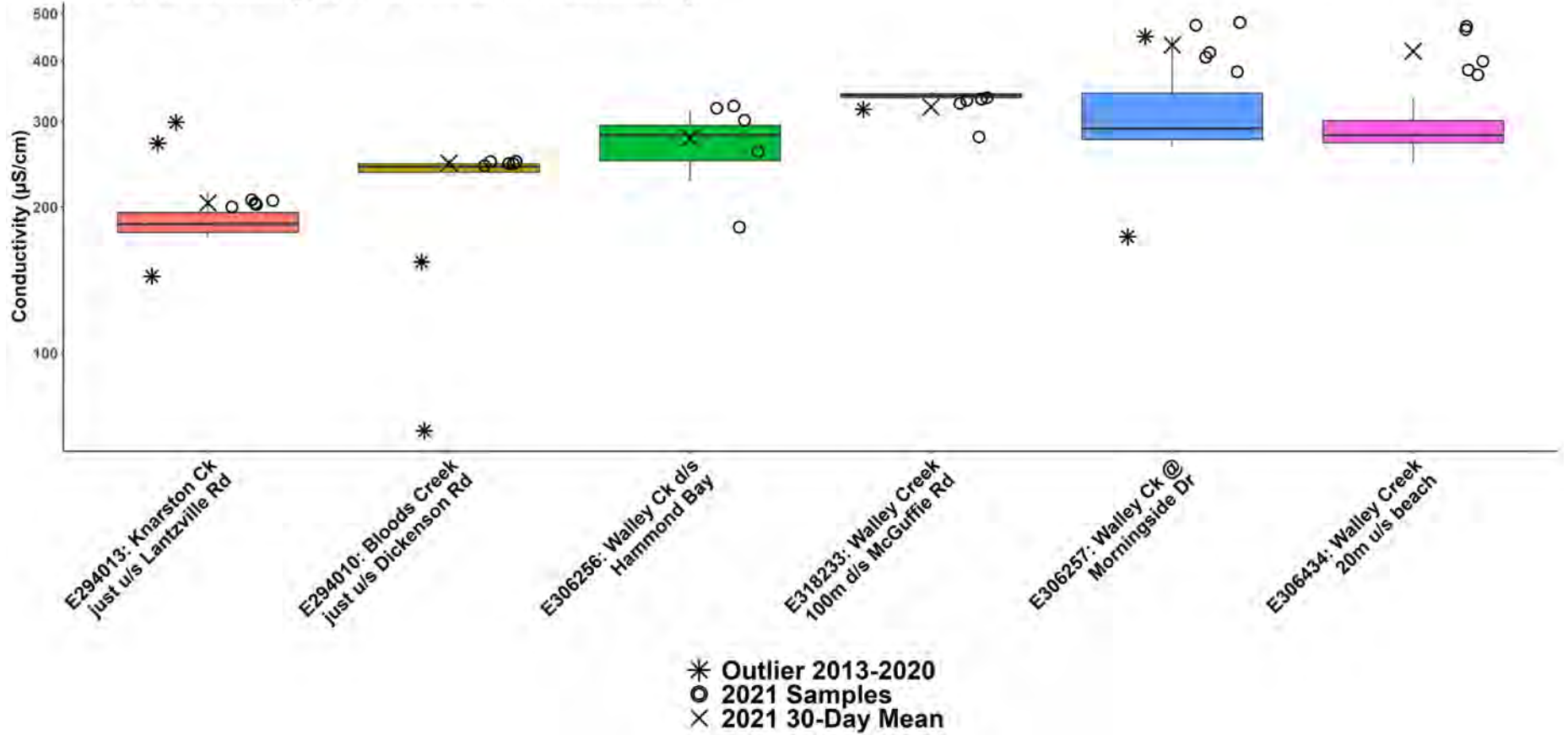


WR5-1a: South Wellington to Nanoose Fall Turbidity

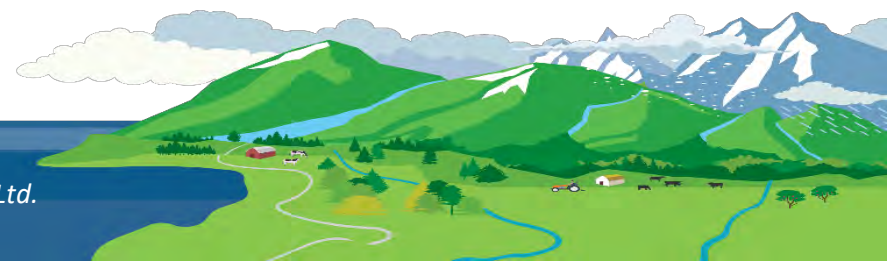
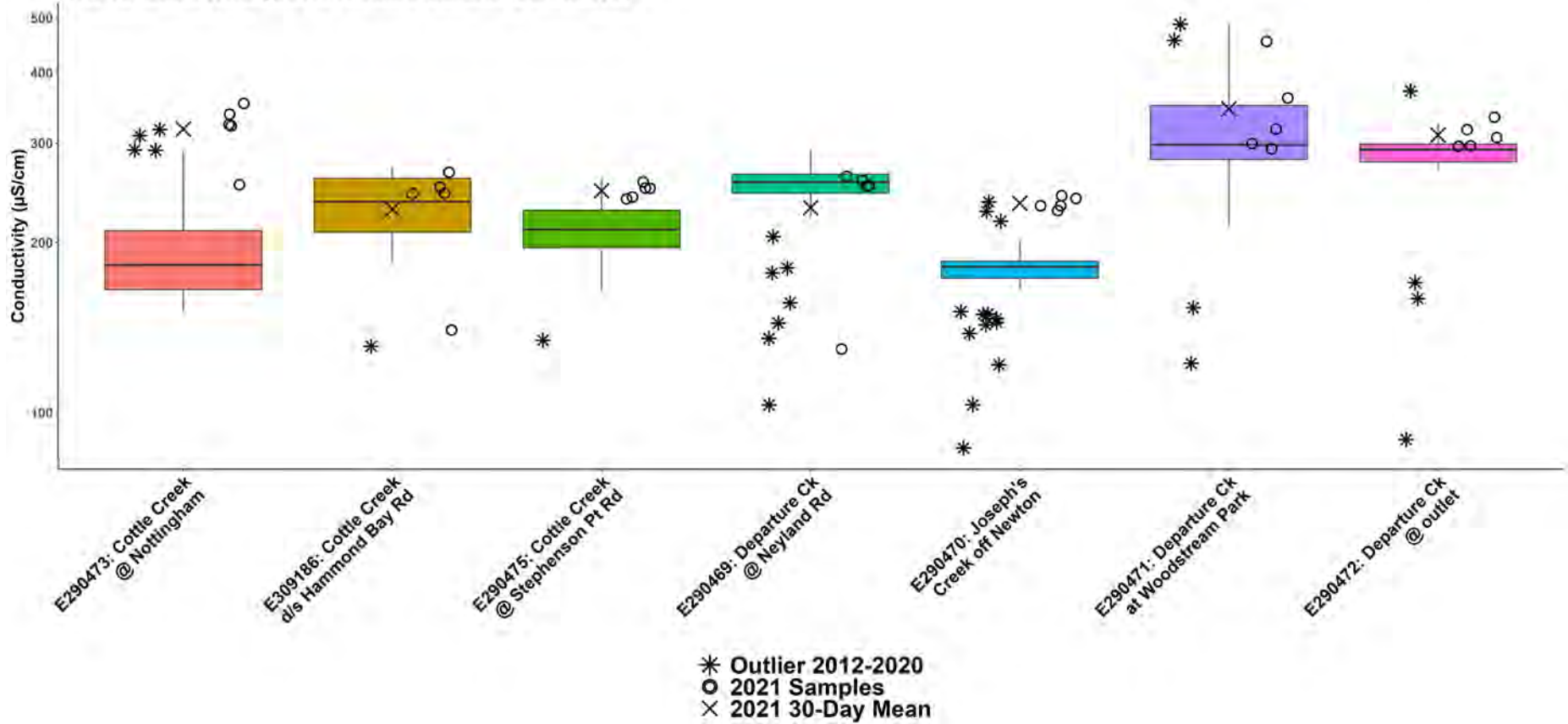




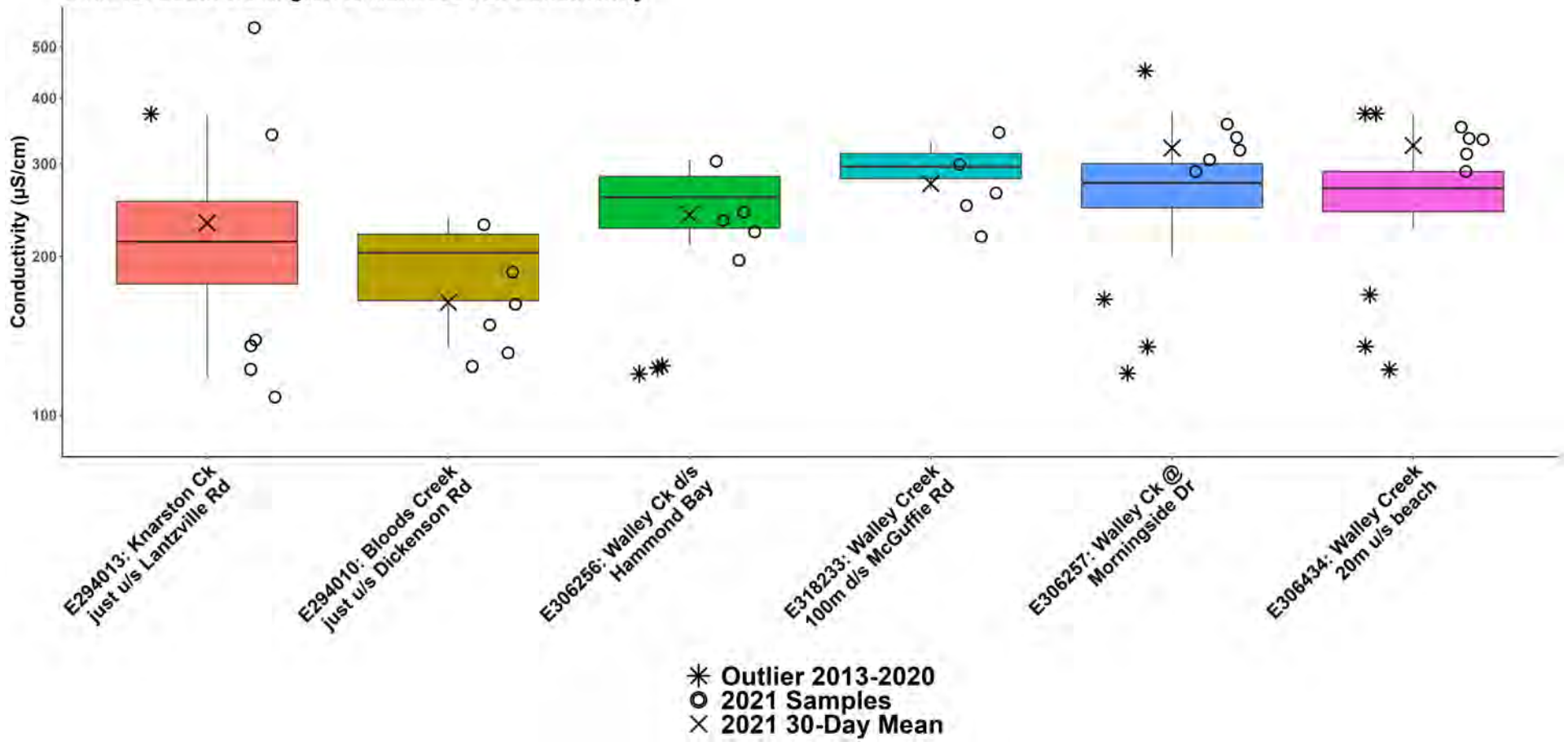
WR5-1a: South Wellington to Nanoose Summer Conductivity



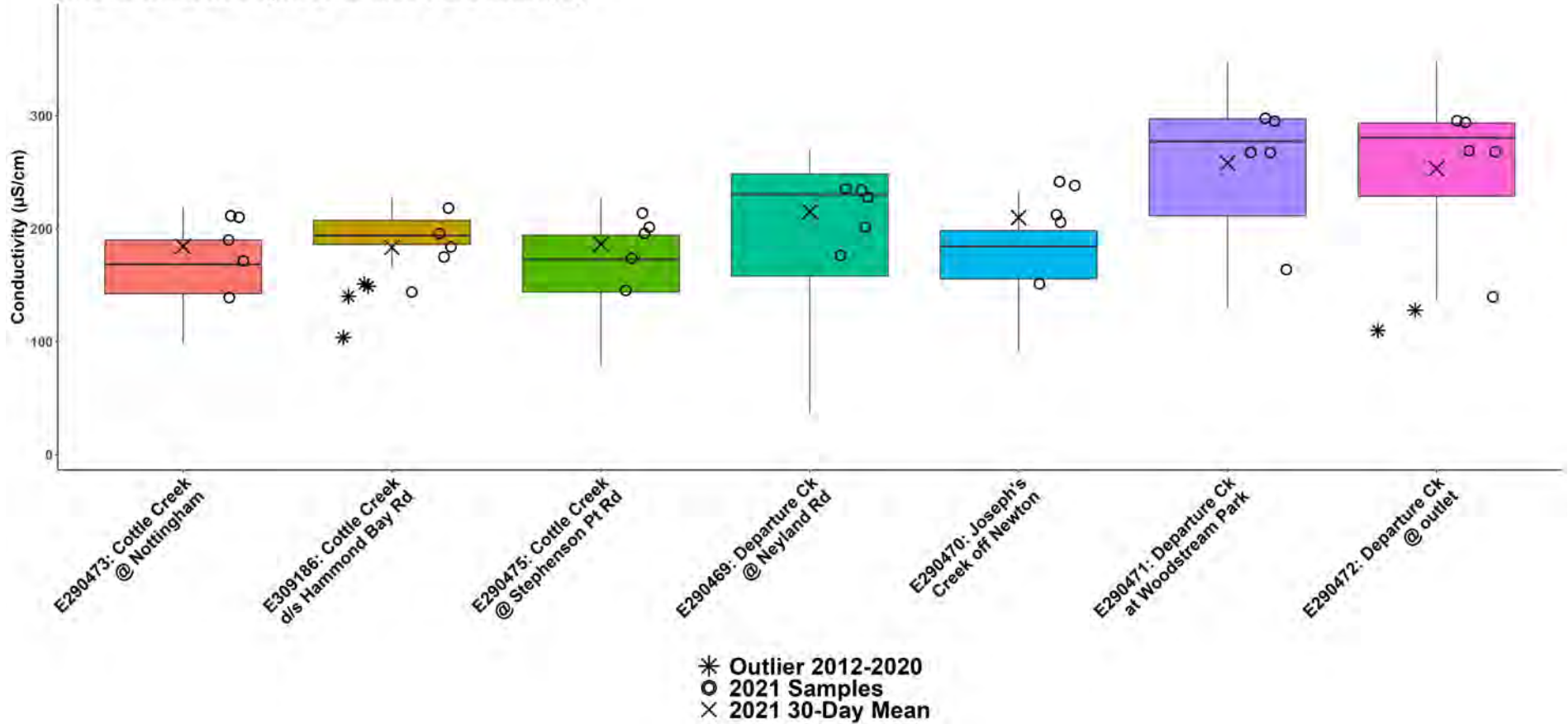
WR5-1b: South Wellington to Nanoose Summer Conductivity



WR5-1a: South Wellington to Nanoose Fall Conductivity



WR5-1b: South Wellington to Nanoose Fall Conductivity





Nanoose Streamkeepers & NALT Lantzville Group 2021 Monitoring Sites

Status

- Active
- Not Active

Watercourse (approximate location)

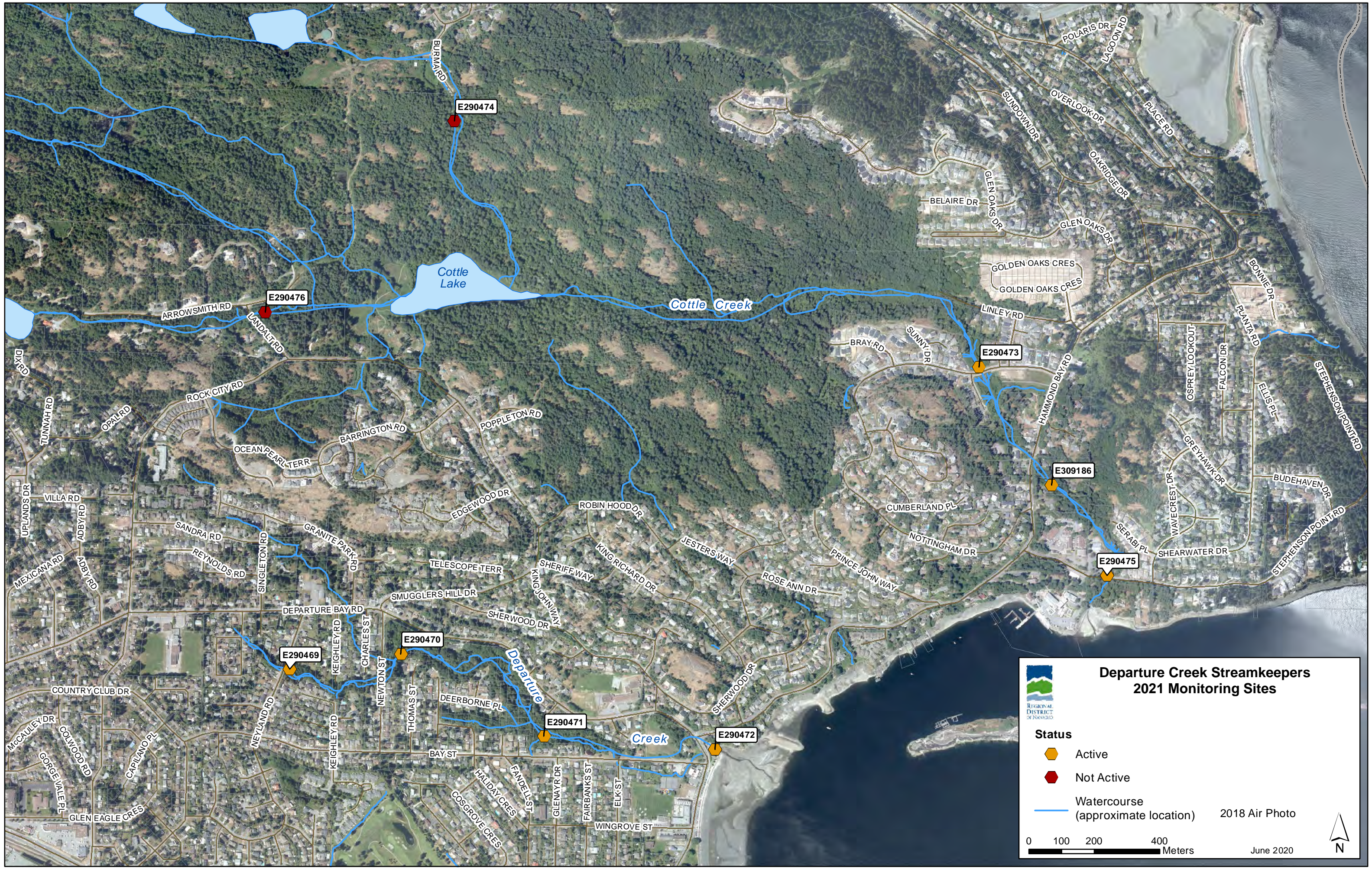
2018 Air Photo

- Community Park
- Regional Park
- Provincial Park

0 500 1,000 2,000 Meters

July 2019




N



**Departure Creek Streamkeepers
2021 Monitoring Sites**

REGIONAL DISTRICT OF NANAIKO

Status

-  Active
-  Not Active
-  Watercourse (approximate location)

2018 Air Photo

0 100 200 400 Meters

June 2020

N



**Walley Creek Streamkeepers
2021 Monitoring Sites**

REGIONAL DISTRICT OF NANAIKO

Status

- ⬠ Active
- ⬠ Not Active

— Watercourse (approximate location)

2018 Air Photo

0 85 170 340 Meters

July 2020

N