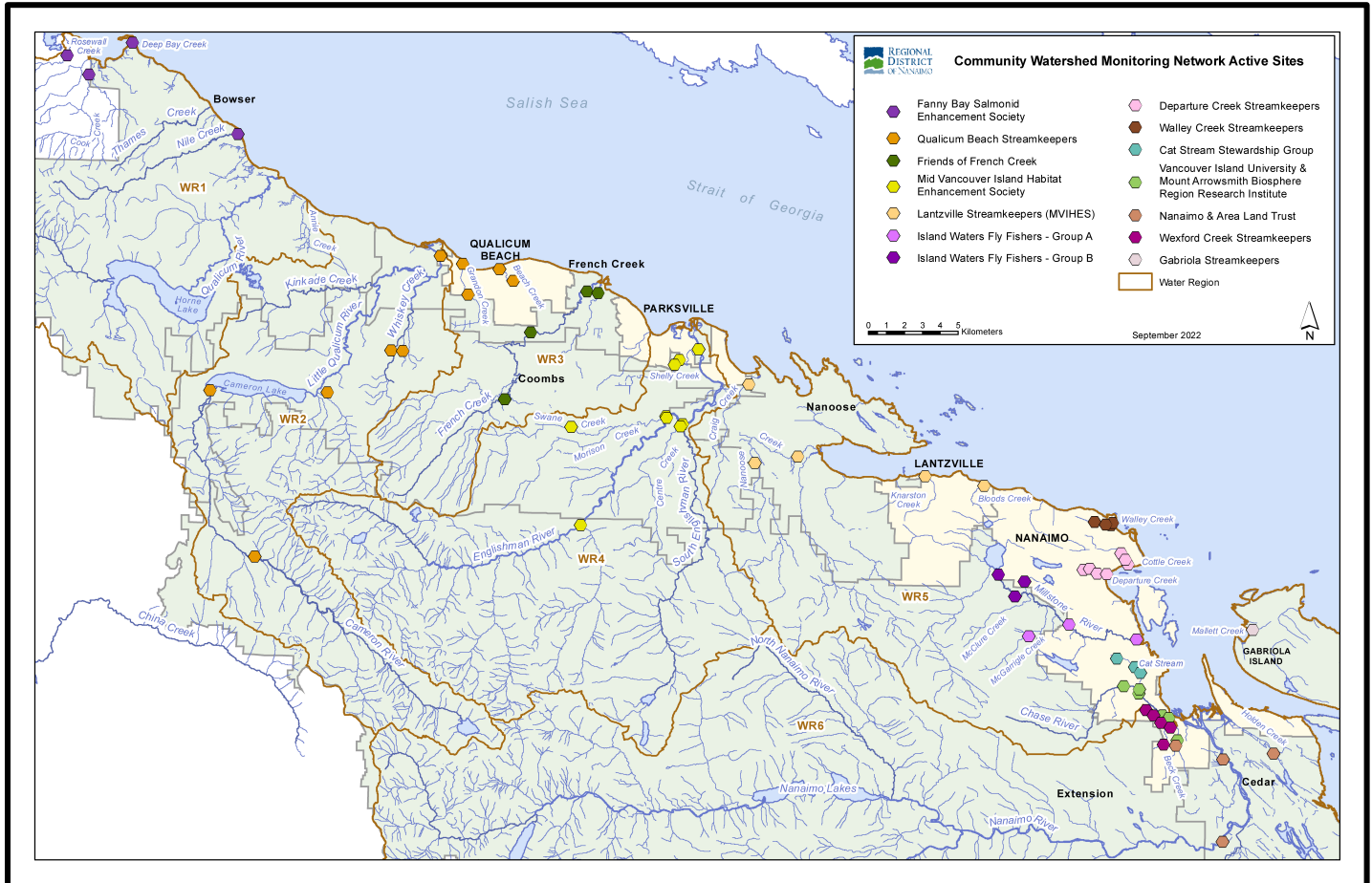


# Community Watershed Monitoring Network

## 2022 Results by Water Region



Included in Water Region (WR) 7 package:

1. CWMN WR7 sample sites
2. How to interpret a box plot
3. Box Plot Comparison – 2022 data to previous years: *displayed by parameter (Turbidity, Dissolved Oxygen, Temperature, Conductivity) & sample period (summer, fall)*
4. Gabriola Streamkeepers (GSK) map



Water Region 7  
sampled by:  
**Gabriola Streamkeepers (GSK)**



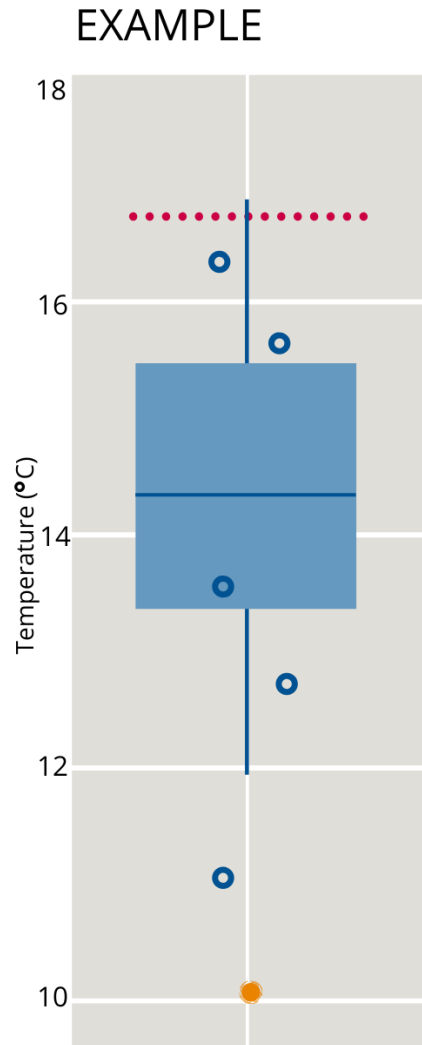
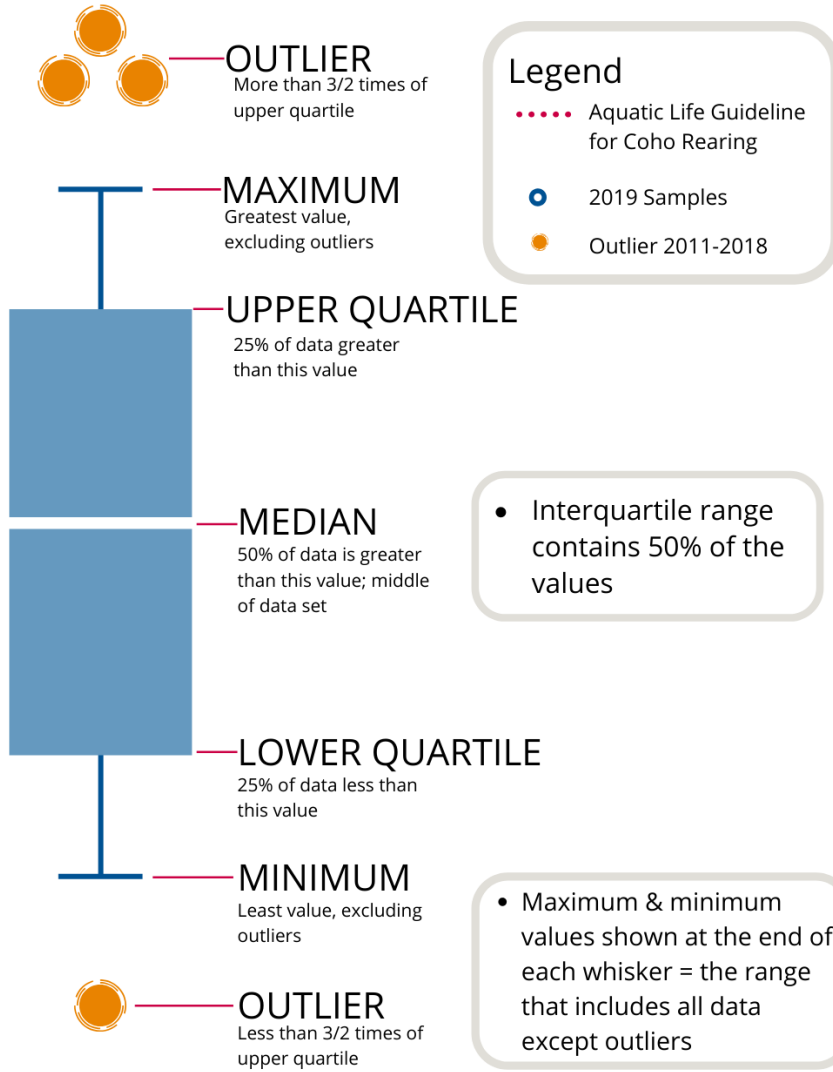
## WR7 CWMN Sample Sites:

The table below shows the sites monitored by each of the streamkeeper organizations, as well as the number of years and which years a site was sampled. The number of years is important to keep in mind when interpreting the box plots as the plot for each site may contain a slightly different temporal range.

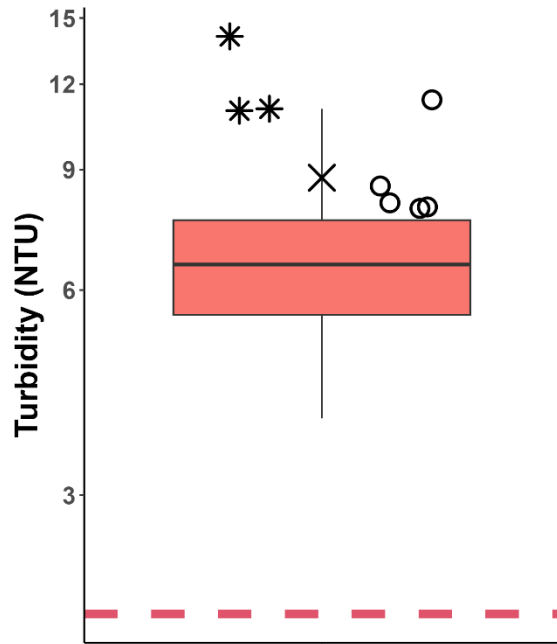
Group	EMS ID	Geographic Description	Years Sampled	Years Monitored
GSk	E304070	Mallett Creek 40m upstream from Taylor Bay Rd	8	2015 - present



# How to Interpret a Box Plot:



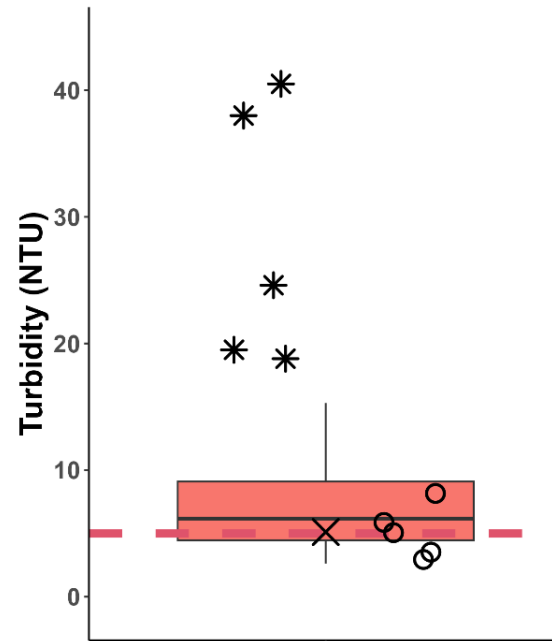
**WR7: Gabriola Island  
Summer Turbidity**



E304070: Mallett Creek

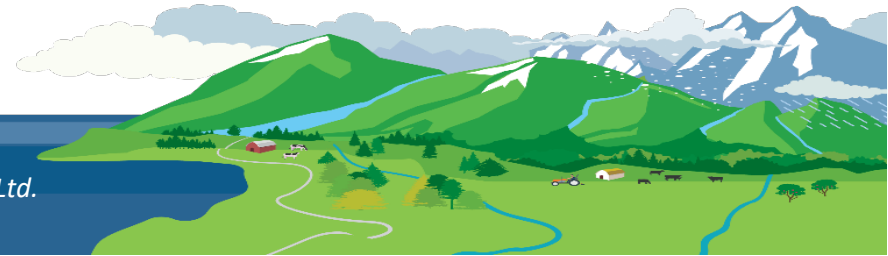
- \* Outlier 2015-2021
- 2022 Samples
- × 2022 30-Day Mean
- Jan-Sept Max (2 NTU)

**WR7: Gabriola Island  
Fall Turbidity**



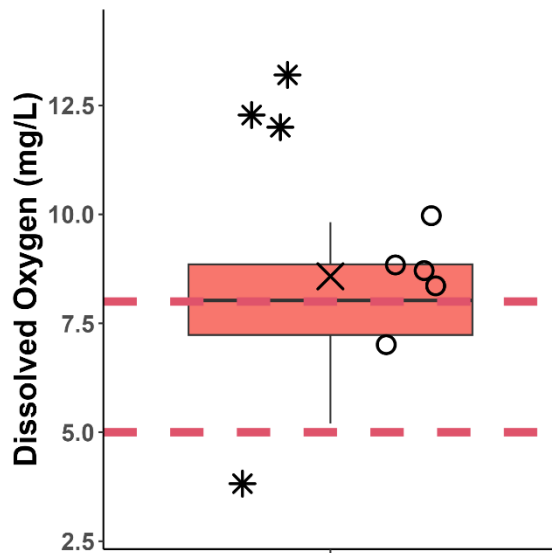
E304070: Mallett Creek

- \* Outlier 2015-2021
- 2022 Samples
- × 2022 30-Day Mean
- Oct-Dec Max (5 NTU)





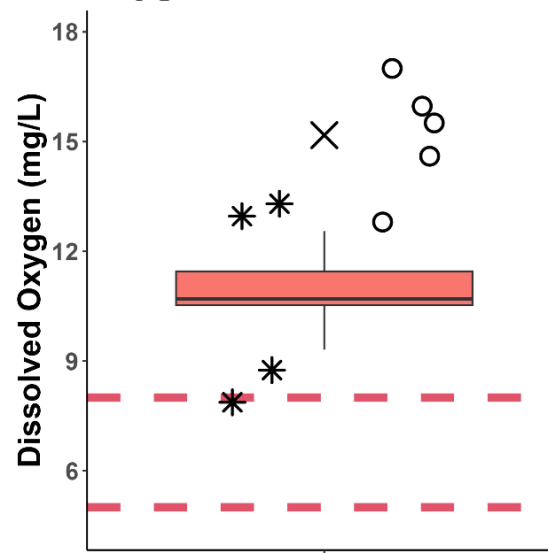
### WR7: Gabriola Island Summer Dissolved Oxygen



E304070: Mallett Creek

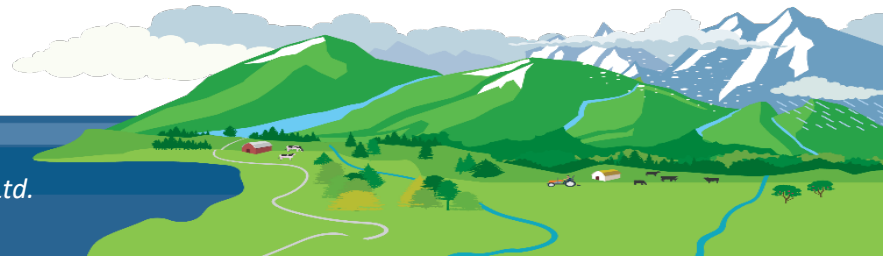
- \* Outlier 2015-2021
- 2022 Samples
- × 2022 30-Day Mean
- 30 Day Average (<8 mg/L)
- Instantaneous Minimum (<5 mg/L)

### WR7: Gabriola Island Fall Dissolved Oxygen

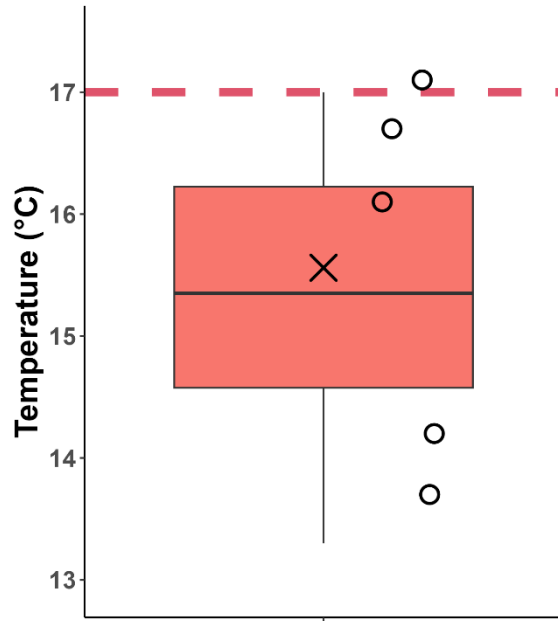


E304070: Mallett Creek

- \* Outlier 2015-2021
- 2022 Samples
- × 2022 30-Day Mean
- 30 Day Average (<8 mg/L)
- Instantaneous Minimum (<5 mg/L)



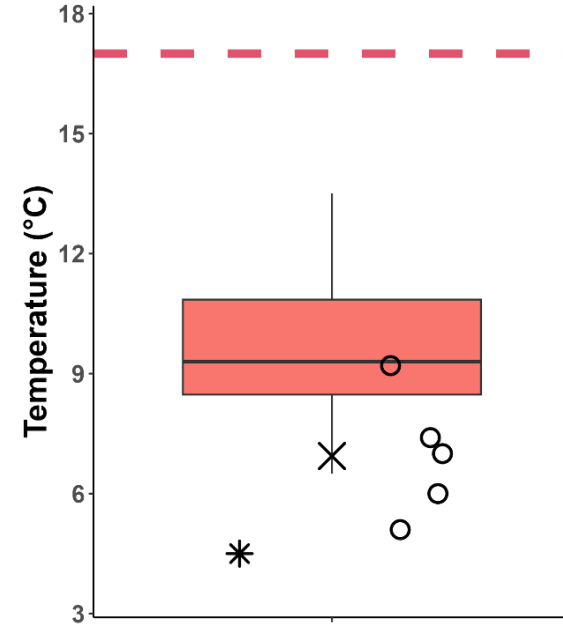
**WR7: Gabriola Island  
Summer Temperature**



E304070: Mallett Creek

- \* Outlier 2015-2021
- 2022 Samples
- × 2022 30-Day Mean
- Aquatic Life Guideline for Coho Rearing (17°C)

**WR7: Gabriola Island  
Fall Temperature**

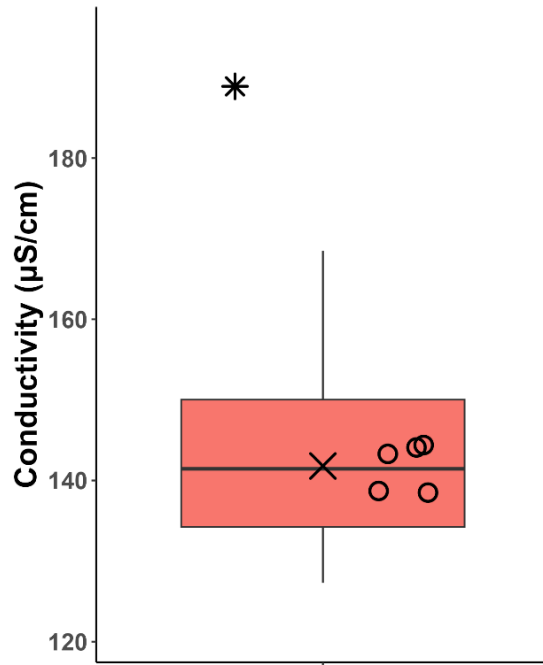


E304070: Mallett Creek

- \* Outlier 2015-2021
- 2022 Samples
- × 2022 30-Day Mean
- Aquatic Life Guideline for Coho Rearing (17°C)



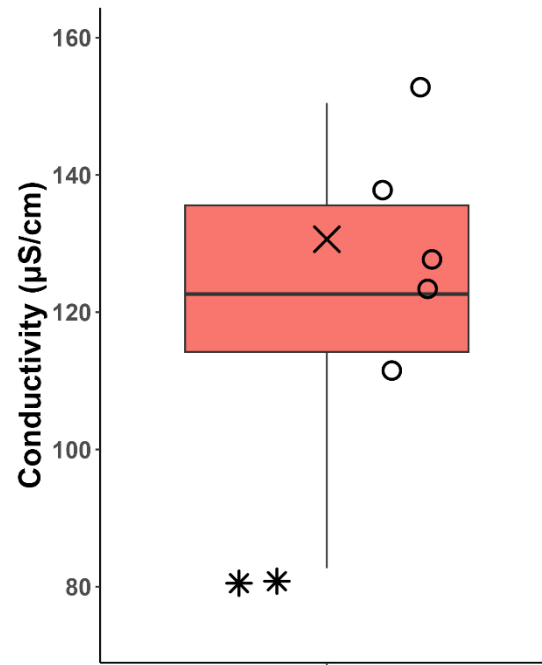
**WR7: Gabriola Island  
Summer Conductivity**



E304070: Mallett Creek

- \* Outlier 2015-2021
- 2022 Samples
- × 2022 30-Day Mean

**WR7: Gabriola Island  
Fall Conductivity**



E304070: Mallett Creek

- \* Outlier 2015-2021
- 2022 Samples
- × 2022 30-Day Mean







**Gabriola Streamkeepers  
2022 Monitoring Sites**

REGIONAL DISTRICT OF NANOHO

<b>Status</b>	Community Park
Active	Regional Park
Not Active	Provincial Park
Watercourse (approximate location)	2020 Air Photo

0 125 250 500 Meters

July 2022

N